

**PORTFOLIO  
SUPPLEMENTARY  
ADDITIONAL ESTIMATES  
STATEMENTS**

**APPROPRIATION BILL (NO. 5) 2005-06  
AND  
APPROPRIATION BILL (NO. 6) 2005-06**

**ENVIRONMENT AND HERITAGE PORTFOLIO**

© Commonwealth of Australia 2006

ISBN

This work is copyright. Apart from any use as permitted under the *Copyright Act 1968*, no part may be reproduced by any process without prior written permission from the Commonwealth. Requests and inquiries concerning reproduction and rights should be addressed to:

Commonwealth Copyright Administration  
Attorney General's Department  
Robert Garran Offices  
National Circuit  
Canberra ACT 2600  
Or posted at:

[http:// www.ag.gov.au/cca](http://www.ag.gov.au/cca)

Printed by Canprint Communications Pty Ltd



**SENATOR THE HON IAN CAMPBELL**

Minister for the Environment and Heritage

Senator for Western Australia

President of the Senate

Australian Senate  
Parliament House  
CANBERRA ACT 2600

Speaker  
House of Representatives  
Parliament House  
CANBERRA ACT 2600

Dear Mr President  
Dear Mr Speaker

I hereby submit Portfolio Supplementary Additional Estimates Statements in support of the additional appropriation sought for the Environment and Heritage Portfolio through *Appropriation Bills (No. 5 and 6) 2005-06*.

These statements have been developed, and are submitted to the Parliament, as a statement of the funding requirements being sought for the portfolio.

I present these statements by virtue of my responsibility for accountability to the Parliament and, through it, the public.

Yours sincerely

[signed]

IAN CAMPBELL

**Canberra**  
Parliament House, Canberra ACT 2600  
Telephone: 02 6277 7640  
Fax: 02 6273 6101

**Perth**  
GPO Box B58, Perth WA 6838  
Telephone: 08 9325 4227  
Fax: 08 9325 7906





# TABLE OF CONTENTS

<b>User Guide</b> .....	<b>ix</b>
Introduction .....	ix
<b>Environment and Heritage Portfolio</b> .....	<b>2</b>
Overview of additional appropriations sought .....	2
Figure 1: Portfolio structure and outcomes .....	3
Revised appropriations and other revenue – Portfolio summary.....	4
<b>Agency Supplementary Additional Estimates Statements</b> .....	<b>7</b>
Department of the Environment and Heritage.....	9
Bureau of Meteorology.....	23
Director of National Parks.....	29



**USER GUIDE**  
**TO THE**  
**PORTFOLIO SUPPLEMENTARY ADDITIONAL**  
**ESTIMATES STATEMENTS**



## USER GUIDE

### INTRODUCTION

The purpose of the Portfolio Supplementary Additional Estimates Statements (SAES) is to explain *Appropriation Bill (No. 5) 2005-06* and *Appropriation Bill (No. 6) 2005-06*. This document serves to inform senators and members of Parliament of the proposed allocation of extra appropriation resources to Government outcomes by agencies within the portfolio.

The SAES are declared by *Appropriation Bill (No. 5) 2005-06* and *Appropriation Bill (No. 6) 2005-06* to be a 'relevant document' to the interpretation of the Bills according to section 15AB of the *Acts Interpretation Act 1901*.

The SAES should be read in conjunction with the 2006-07 Portfolio Budget Statements, which accompany this document, and include information from the appropriation bills explained in this document.



## **PORTFOLIO OVERVIEW**

## ENVIRONMENT AND HERITAGE PORTFOLIO

### OVERVIEW OF ADDITIONAL APPROPRIATIONS SOUGHT

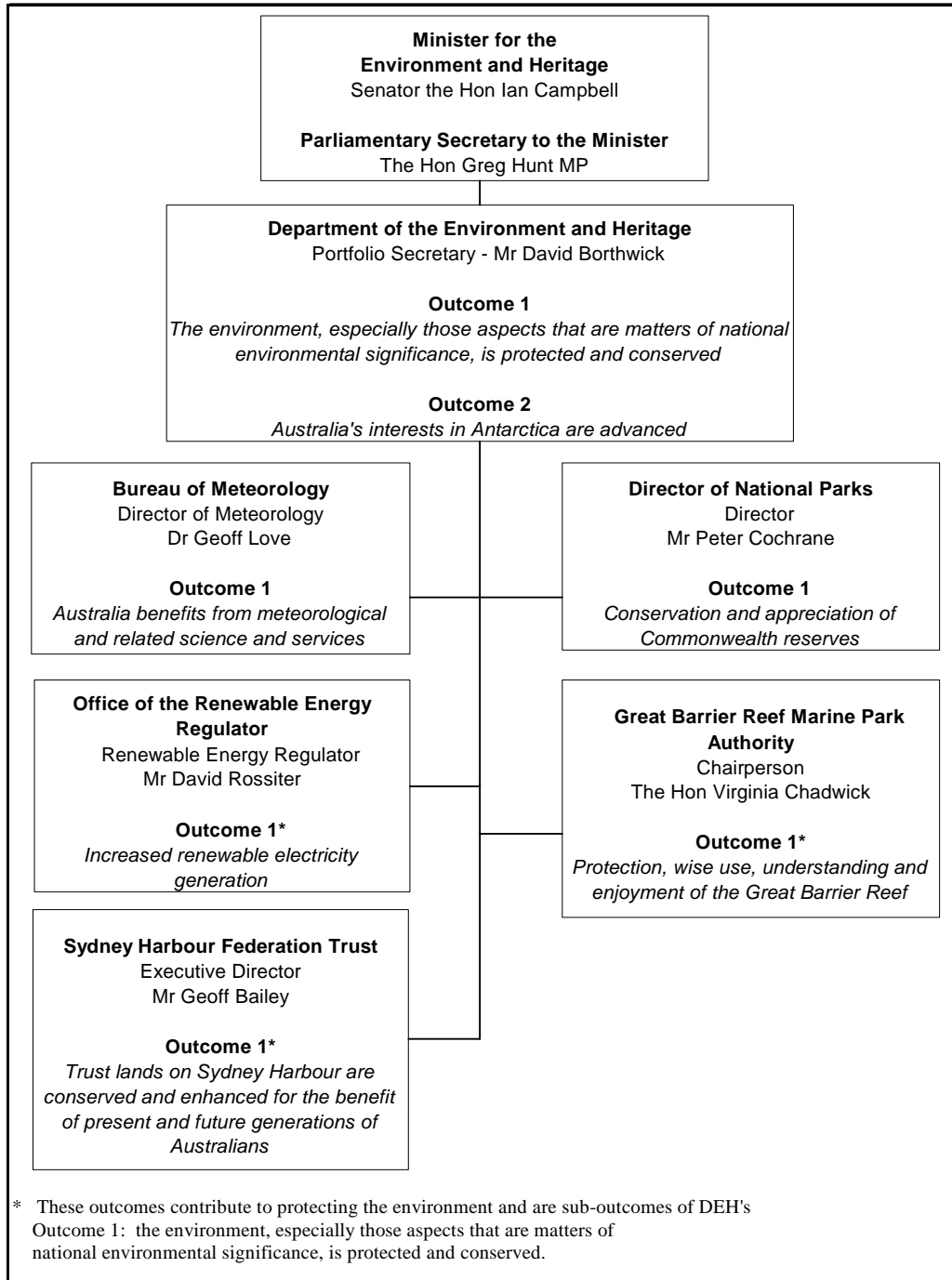
Overall, the Portfolio is seeking a total increase of **\$28.156m** in government appropriations consisting of **\$20.219m** through *Appropriation Bill (No. 5) 2005-06* and **\$7.937m** increase through *Appropriation Bill (No. 6) 2005-06*.

Of the total increase in appropriations, the **Department of the Environment and Heritage** (DEH) is seeking **\$14.621m** through *Appropriation Bill (No.5) 2005-06* (excluding \$1.154m to be transferred to the Director of National Parks (DNP)). The increase relates primarily to additional appropriations DEH (Outcome 1—Environment) is receiving for the Australian Wildlife Hospital—grant, Heritage building restorations—the Basilica of St Patrick (Fremantle) and St Mary’s Cathedral (Hobart), Mawson’s Hut Foundation—expedition, for conservation work on the historic huts built by Sir Douglas Mawson in 1912, and for decisions taken by the Government, but not yet announced. DEH is seeking **\$1.871m** through *Appropriation Bill (No. 6) 2005-06* (excluding \$6.066m to be transferred to DNP).

The **Bureau of Meteorology** is seeking **\$4.444m** through *Appropriation Bill (No.5)* to fund the increase in depreciation expense (\$1.619m) as a result of the recognition of make good and restitution costs in the meteorological asset base to comply with the adoption of the new international accounting standards, the Australian Equivalent for International Financial Reporting System (AEIFRS) and an increase in depreciation expense (\$2.825m) as a result of a 2004-05 revaluation of the meteorological asset base.

The additional funding of **\$7.220m**, provided to the **Director of National Parks** for Kakadu and Uluru-Kata Tjuta National Parks—tourism infrastructure and equipment, will be appropriated to the Department of the Environment and Heritage in 2005-06 through *Appropriation Bills (No.5 and 6)* and transferred to DNP.

**FIGURE 1: PORTFOLIO STRUCTURE AND OUTCOMES**



REVISED APPROPRIATIONS AND OTHER REVENUE – PORTFOLIO SUMMARY

	Appropriations					Receipts		Total
	\$'000	\$'000	\$'000	\$'000	% <sup>(5)</sup>	\$'000	% <sup>(5)</sup>	Resources <sup>(6)</sup>
	Bill	Bill	Special	Total				\$'000
	No. 1 & 3 & 5	No. 2 <sup>(1)</sup> & 4 & 6	Approp	Approp <sup>(3)</sup>	(A)+(C) / (A)+(C)+(E)	(E)	(E)/ (A)+(C)+(E)	(F)=(D)+(E)
(A)	(B)	(C)	(D)=(A)+(B)+ (C)					
<b>Outcome 1 - The environment, especially those aspects that are matters of national environmental significance, is protected and conserved</b>								
<b>Environment</b>								
Administered	479,581	33,340	22,445	535,366	98.9%	5,490	1.1%	540,856
Administered assets and liabilities	-	1,998	-	1,998	na	-	na	1,998
Departmental	234,795	-	-	234,795	85.2%	40,902	14.8%	275,697
Departmental equity injection	-	6,066	-	6,066	na	-	na	6,066
<b>Office of the Renewable Energy Regulator</b>								
Administered	-	-	117	117	na	-	na	117
Departmental	2,687	-	-	2,687	100.0%	-	na	2,687
<b>Director of National Parks</b>								
Departmental	-	-	-	-	na	55,640	na	55,640
Departmental equity injection	-	-	-	-	na	6,066	na	6,066
<b>Great Barrier Reef Marine Park</b>								
Departmental	15,444	-	7,500	22,944	57.3%	17,080	42.7%	40,024

REVISED APPROPRIATIONS AND OTHER REVENUE – PORTFOLIO SUMMARY (CONTINUED)

	Appropriations					Receipts		Total
	\$'000	\$'000	\$'000	\$'000	% <sup>(5)</sup>	\$'000	% <sup>(5)</sup>	Resources <sup>(6)</sup>
	Bill	Bill	Special	Total				\$'000
	No. 1 & 3 & 5	No. 2 <sup>(1)</sup> & 4 & 6	Approp	Approp <sup>(3)</sup>	(A)+(C) / (A)+(C)+(E)	(E)	(E)/ (A)+(C)+(E)	(F)=(D)+(E)
(A)	(B)	(C)	(D)=(A)+(B)+ (C)	(A)+(C) / (A)+(C)+(E)	(E)	(E)/ (A)+(C)+(E)	(F)=(D)+(E)	
<b>Sydney Harbour Federation Trust</b>								
Departmental	3,151	-	-	3,151	44.0%	4,006	56.0%	7,157
Departmental equity injection	-	20,500	-	20,500	na	-	na	20,500
<b>Total Outcome 1</b>	<b>735,658</b>	<b>61,904</b>	<b>30,062</b>	<b>827,624</b>	<b>na</b>	<b>129,184</b>	<b>na</b>	<b>956,808</b>
<b>Outcome 2 - Australia's interests in Antarctica are advanced</b>								
<b>Antarctic</b>								
Administered	320	-	-	320	na	-	na	320
Departmental	94,563	-	-	94,563	97.8%	2,109	2.2%	96,672
Departmental equity injection	-	4,805	-	4,805	na	-	na	4,805
<b>Total Outcome 2</b>	<b>94,883</b>	<b>4,805</b>	<b>-</b>	<b>99,688</b>	<b>na</b>	<b>2,109</b>	<b>na</b>	<b>101,797</b>
<b>Outcome 1 - Australia benefits from meteorological and related science and services</b>								
<b>Bureau of Meteorology</b>								
Departmental	211,170	-	-	211,170	92.7%	16,697	7.3%	227,867
Departmental equity injection	-	13,105	-	13,105	na	-	na	13,105
<b>Total Outcome 1</b>	<b>211,170</b>	<b>13,105</b>	<b>-</b>	<b>224,275</b>	<b>na</b>	<b>16,697</b>	<b>-</b>	<b>240,972</b>

**REVISED APPROPRIATIONS AND OTHER REVENUE – PORTFOLIO SUMMARY (CONTINUED)**

	Appropriations					Receipts		Total Resources <sup>(6)</sup>
	\$'000	\$'000	\$'000	\$'000	% <sup>(5)</sup>	\$'000	% <sup>(5)</sup>	\$'000
	Bill No. 1 & 3 & 5	Bill No. 2 <sup>(1)</sup> & 4 & 6	Special Approp	Total Approp <sup>(3)</sup>	(D)=(A)+(B)+(C)	(A)+(C) / (A)+(C)+(E)	(E) / (A)+(C)+(E)	(F)=(D)+(E)
<b>Total Portfolio</b>								
Administered	479,901	35,338	22,562	537,801	na	5,490	na	543,291
Departmental	561,810	38,410	7,500	607,720	80.7%	136,434	19.3%	744,154
<b>SUB TOTAL</b>	<b>1,041,711</b>	<b>73,748</b>	<b>30,062</b>	<b>1,145,521</b>	<b>na</b>	<b>141,924</b>	<b>na</b>	<b>1,287,445</b>
<b>Director of National Parks</b>						<sup>(2)</sup>		<sup>(2)</sup>
Departmental	-	-	-	-	na	41,962	na	41,962
Departmental equity injection	-	-	-	-	na	6,066	na	6,066
<b>TOTAL PORTFOLIO RESOURCES</b>	<b>1,041,711</b>	<b>73,748</b>	<b>30,062</b>	<b>1,145,521</b>	<b>na</b>	<b>93,896</b>	<b>na</b>	<b>1,239,417</b>

<sup>(1)</sup> Under the appropriate structure, Bill No. 2, Bill No. 4 and Bill No. 6 include Specific Purpose Payments (SPPs), new agency outcomes (NAOs), administered capital and departmental capital via departmental injections and loans.

<sup>(2)</sup> DNP resourcing is appropriated to DEH and is included in Outcome 1 appropriation totals. To avoid double counting DNP's resourcing is not again counted

<sup>(3)</sup> Total appropriations = Bill No. 1, Bill No. 3 and Bill No. 5 + Bill No. 2, Bill No. 4 and Bill No. 6 + Special appropriations.

<sup>(4)</sup> Departmental and administered receipts from independent sources that are available to be spent.

<sup>(5)</sup> Percentage figures indicate the percentage contribution of revenue from government (Departmental Appropriations) to the total price of outputs (= Bill No.1, Bill No. 3 and Bill No. 5 + Special Appropriation + Revenue from other sources).

<sup>(6)</sup> Total resources = Total appropriations + Revenue from other sources.

**AGENCY SUPPLEMENTARY ADDITIONAL ESTIMATES  
STATEMENTS**

Department of the Environment and Heritage

Bureau of Meteorology

Director of National Parks



**DEPARTMENT OF THE  
ENVIRONMENT AND HERITAGE  
SUPPLEMENTARY ADDITIONAL  
ESTIMATES STATEMENTS**



## TABLE OF CONTENTS

<b>Variations – measures and other .....</b>	<b>13</b>
Table 1.1: Supplementary additional estimates and variations to outcome – measures.....	16
<b>Other Variations .....</b>	<b>17</b>
Table 1.2: Supplementary additional estimates and variations to outcome – other variations .....	17
<b>Measures – Portfolio summary .....</b>	<b>19</b>
Table 1.3: Summary of measures since Portfolio Additional Estimates Statements 2005-06 .....	19
<b>Breakdown, by appropriation bill, of additional funding sought .....</b>	<b>20</b>
Table 1.4: Appropriation Bill (No. 5) 2005–06.....	20
Table 1.5: Appropriation Bill (No. 6) 2005–06.....	21



## VARIATIONS – MEASURES AND OTHER

The Department of the Environment and Heritage (DEH) is seeking supplementary additional estimates totalling **\$15.775m** in *Appropriation Bill (No. 5) 2005–06* and **\$7.937m** in *Appropriation Bill (No. 6) 2005–06* comprising:

**\$1.327m** in departmental outputs appropriation through *Appropriation Bill (No. 5)* for the following items:

- **\$0.173m** for the Biofuels Taskforce – Australian Government Response. The Australian Government is providing additional funding for the commencement of projects including Ethanol Labelling, Vehicle Testing, Introducing Standard Forms of Biodiesel, a Health Benefits Study and a Biodiesel Trial in Kakadu National Park. The departmental output forward estimates have been increased by \$2.312m in 2006–07, \$1.579m in 2007–08 and \$1.628m in 2008–09.
- **\$1.154m** for Kakadu and Uluru-Kata Tjuta National Parks – tourism infrastructure and equipment, to fund the initial stages of implementation of a major new strategic direction for tourism in Kakadu National Park and to assist in addressing increasing risks to both visitor amenity and safety and cultural conservation within Uluru-Kata Tjuta National Park and Kakadu National Park.

**\$14.448m** in administered expenses through *Appropriation Bill (No. 5)* for the following items:

- **\$2.500m** for the Australian Wildlife Hospital – grant. The Australian Government is providing additional funding of \$2.500m to assist in meeting the capital costs associated with the expansion of the hospital’s surgical, rehabilitation, research and training facilities.
- **\$3.000m** for Heritage building restorations – the Basilica of St Patrick and St Mary’s Cathedral. The Basilica of St Patrick in Fremantle will receive \$1m and St Mary’s Cathedral in Hobart will receive \$2m. Additional funding of \$2m was provided for the St John’s Cathedral Brisbane – continuation in the 2005–06 Additional Estimates.
- **\$0.500m** for the National Cultural Heritage Account Top Up Funding.

## DEPARTMENT OF THE ENVIRONMENT AND HERITAGE

---

- **\$0.355m** for the Biofuels Taskforce—Australian Government Response. The Australian Government is providing additional funding to increase the monitoring, compliance and enforcement of fuel quality standards and a Vehicle Testing and Health Benefits Study. The administered output forward estimates have been increased by \$3.749m in 2006-07 and \$0.15m in both 2007-08 and 2008-09.
- **\$0.320m** for the Mawson's Hut Foundation—expedition. Additional funding has been provided to fund a major expedition to Commonwealth Bay in the Antarctic to undertake conservation work on the historic huts built by Sir Douglas Mawson in 1912.
- **\$28.000m** for Decisions Taken but not yet Announced.
- **\$3.005m reduction**, representing movement of funds from 2005-06 to 2006-07 for the Regional Natural Heritage Programme.
- **\$1.300m reduction**, representing movement of funds from 2005-06 to 2006-07 for the HMAS *Sydney* (II) – Search Programme.
- **\$0.416m reduction**, representing movement of funds from 2005-06 to 2006-07 for the Extension of Green Stamp Programme.
- **\$0.080m reduction**, representing movement of funds from 2005-06 to 2006-07 for the Improving Launceston's Air Quality Programme.
- **\$1.302m reduction**, representing movement of funds from 2005-06 to 2006-07 for the A Sustainable Future for Tasmania – Mole Creek Programme.
- **\$0.954m reduction**, representing movement of funds from 2005-06 to 2006-07 for the A Sustainable Future for Tasmania – Tourism Programme.
- **\$6.000m reduction** in 2005-06, representing movement of funds from 2005-06 to 2006-07 for the Maintaining Australia's Biodiversity Hotspots Programme, with the reinstatement of **\$2.000m** in 2006-07 for funding that lapsed in 2004-05.
- **\$0.115m reduction**, representing movement of funds from 2005-06 to 2006-07 for the Commonwealth Environment Research Facilities Programme.

DEPARTMENT OF THE ENVIRONMENT AND HERITAGE

---

- **\$2.000m reduction**, representing movement of funds from 2005-06, a further movement of funds of **\$18.000m** from 2008-09, resulting in an increase of **\$18.000m** in 2006-07 and **\$10.214m** in 2007-09 for the Australian Government's Community Water Grants Programme.
- **\$0.379m reduction**, representing a movement of funds from 2005-06 to 2006-07 for the Renewable Energy Commercialisation Programme.
- **\$1.740m reduction**, representing a movement of funds from 2005-06 to 2006-07 for the Alternate Fuel Conversion Programme.
- **\$0.300m reduction**, representing a movement of funds from 2005-06 to 2006-07 for the indigenous Heritage Programme.
- **\$1.418m reduction**, representing a movement of funds from 2005-06 to 2006-07 for the Greater Barrier Reef Structural Adjustment Programme.
- **\$0.110m reduction**, representing a movement of funds from 2005-06 to 2006-07 for the Photovoltaic Rebate Programme.
- **\$1.108m reduction**, representing the reclassification of funding from Bill No.5 to Bill No.6 for the Strengthening Tasmania - Tamar River Pylons Programme and the Development of Sewerage Scheme for Boat Harbour and Sister's Beach Programme.

**\$7.937m** in administered expenses through *Appropriation Bill (No. 6)* for the following items:

- **\$6.066m** for Kakadu and Uluru-Kata Tjuta National Parks—tourism infrastructure and equipment, providing an equity injection for the initial stages of implementation of a major new strategic direction for tourism in Kakadu National Park and to assist in addressing increasing risks to both visitor amenity and safety, and cultural conservation within Uluru-Kata Tjuta National Park and Kakadu National Park.
- **\$1.871m** for DEH for administered assets and liabilities.

DEPARTMENT OF THE ENVIRONMENT AND HERITAGE

**Table 1.1: Supplementary additional estimates and variations to outcome – measures**

	2005-06 (\$'000)	2006-07 (\$'000)	2007-08 (\$'000)	2008-09 (\$'000)
<b>Outcome 1</b>				
<b>Increase in administered appropriations</b>				
Australian Wildlife Hospital - grant	2,500	-	-	-
Heritage building restorations - the Basilica of St Patrick and St Mary's Cathedral	3,000	-	-	-
Decisions taken but not yet announced	28,000	-	-	-
<b>Total increase in administered appropriations</b>	<b>33,500</b>	-	-	-
<b>Increase in departmental appropriations</b>				
Director of National Parks - additional funding				
- Kakadu and Uluru-Kata Tjuta National Parks - tourism infrastructure and equipment	1,154	-	-	-
- Kakadu and Uluru-Kata Tjuta National Parks - tourism infrastructure and equipment - capital injection	6,066	-	-	-
<b>Total increase in departmental appropriations</b>	<b>7,220</b>	-	-	-
<b>Outcome 2</b>				
<b>Increase in administered appropriations</b>				
Mawson's Hut Foundation - expedition	320	-	-	-
<b>Total increase in administered appropriations</b>	<b>320</b>	-	-	-
<b>Total increase in administered appropriations for Outcome 1 and Outcome 2</b>	<b>33,820</b>	-	-	-
<b>TOTAL MEASURES VARIATIONS</b>	<b>41,040</b>	-	-	-

DEPARTMENT OF THE ENVIRONMENT AND HERITAGE

**Other Variations**

**Table 1.2: Supplementary additional estimates and variations to outcome – other variations**

	2005-06	2006-07	2007-08	2008-09
	(\$'000)	(\$'000)	(\$'000)	(\$'000)
<b>Outcome 1 - Other variations in administered appropriations</b>				
Biofuels Taskforce - Australian Government Response	355	3,749	15	15
National Cultural Heritage Account Top-Up funding	500	-	-	-
Movement of Funds - Regional Natural Heritage Programme	(3,005)	3,005	-	-
Movement of Funds - HMAS <i>Sydney</i> (II) - Search	(1,300)	1,300	-	-
Movement of Funds - Extension of Green Stamp Programme	(416)	416	-	-
Movement of Funds - Improving Launceston's Air Quality	(80)	80	-	-
Movement of Funds - A Sustainable Future for Tasmania - Mole Creek	(1,302)	1,302	-	-
Movement of Funds - A Sustainable Future for Tasmania - Tourism	(954)	954	-	-
Movement of Funds - Maintaining Australia's Biodiversity Hotspots	(6,000)	8,000	-	-
Movement of Funds - Commonwealth Environment Research Facilities	(115)	115	-	-
Movement of Funds - Australian Government's Community Water Grants	(2,000)	18,000	10,214	(26,214)
Movement of Funds - Renewable Energy Commercialisation Programme	(379)	379	-	-
Movement of Funds - Alternate Fuel Conversion Programme	(1,740)	1,740	-	-
Movement of Funds - Indigenous Heritage Programme	(300)	300	-	-
Great Barrier Reef Structural Adjustment Package	(1,418)	1,418	-	-
Movement of Funds - Photovoltaic Rebate Programme	(110)	110	-	-
Reclassification of SPP Funding - Change in Bills <sup>(a)</sup>	(1,108)	-	-	-
<b>Total increase in administered appropriations <sup>(b)</sup></b>	<b>(19,372)</b>	<b>40,868</b>	<b>10,229</b>	<b>(26,199)</b>

DEPARTMENT OF THE ENVIRONMENT AND HERITAGE

**Table 1.2: Supplementary additional estimates and variations to outcome – other variations (continued)**

Administered Assets and liabilities	1,871	(1,871)	-	-
<b>Total increase in administered assets and liabilities</b>	<b>1,871</b>	<b>(1,871)</b>	<b>-</b>	<b>-</b>
	2005-06	2006-07	2007-08	2008-09
	(\$'000)	(\$'000)	(\$'000)	(\$'000)
<b>Outcome 1 - Variations in departmental appropriations</b>				
Biofuels - Australian Government Response	173	2,322	1,579	1,628
<b>Total increase in departmental appropriations</b>	<b>173</b>	<b>2,322</b>	<b>1,579</b>	<b>1,628</b>
<b>TOTAL OTHER VARIATIONS <sup>(c)</sup></b>	<b>(17,328)</b>	<b>41,319</b>	<b>11,808</b>	<b>(24,571)</b>
<b>TOTAL VARIATIONS MEASURES AND OTHER VARIATIONS</b>	<b>23,712</b>	<b>41,319</b>	<b>11,808</b>	<b>(24,571)</b>

<sup>(a)</sup> Strengthening Tasmania funding - for Tamar River Pylons and Development of Sewerage Scheme at Boat Harbour and Sisters Beach, has been redefined as SPP Funding - Through the States.

<sup>(b)</sup> Movement of funds are not included for the Photovoltaic Rebate Programme (\$0.635m from 2005-06 to 2006-07) and the Renewable Remote Power Generation Programme (\$0.9m from 2005-06 to 2006-07), with these movements instead included in Appropriation Bill (No.2) 2006-07.

<sup>(c)</sup> This table is repeated in the Portfolio Budget Statements 2006-07 for the Environment and Heritage Portfolio for information purposes only.

## MEASURES – DEPARTMENT OF THE ENVIRONMENT AND HERITAGE SUMMARY

**Table 1.3: Summary of measures since Portfolio Additional Estimates Statements 2005-06**

Measure Title	Outcome	Outputs affected	Appropriations 2005-06			Appropriations 2006-07			Appropriations 2007-08			Appropriations 2008-09		
			Admin expenses	Dept outputs	Total	Admin expenses	Dept outputs	Total	Admin expenses	Dept outputs	Total	Admin expenses	Dept outputs	Total
<b>Expense Measures:</b>			(\$'000)	(\$'000)	(\$'000)	(\$'000)	(\$'000)	(\$'000)	(\$'000)	(\$'000)	(\$'000)	(\$'000)	(\$'000)	(\$'000)
Australian Wildlife Hospital - grant	1	1.5	2,500	-	<b>2,500</b>	-	-	-	-	-	-	-	-	-
Heritage building restorations - the Basilica of St Patrick and St Mary's Cathedral	1	1.4	3,000	-	<b>3,000</b>	-	-	-	-	-	-	-	-	-
St John's Cathedral Brisbane - contribution <sup>(a)</sup>	1	1.4	-	-	-	-	-	-	-	-	-	-	-	-
Mawson's Hut Foundation - expedition	2	2.1	320	-	<b>320</b>	-	-	-	-	-	-	-	-	-
Kakadu and Uluru-Kata Tjuta National Parks - tourism infrastructure and equipment	1	1.2	-	1,154	<b>1,154</b>	-	-	-	-	-	-	-	-	-
Kakadu and Uluru-Kata Tjuta National Parks - tourism infrastructure and equipment - capital injection	1	1.2	-	6,066	<b>6,066</b>	-	-	-	-	-	-	-	-	-
Decisions taken but not yet announced	na	na	28,000	-	<b>28,000</b>	-	-	-	-	-	-	-	-	-
<b>Total Expense Measures</b>			<b>33,820</b>	<b>7,220</b>	<b>41,040</b>	-	-	-	-	-	-	-	-	-

(a) The Department of the Environment and Heritage received funding for this measure through Appropriation Bill (No.3) 2005-06

DEPARTMENT OF THE ENVIRONMENT AND HERITAGE

**BREAKDOWN, BY APPROPRIATION BILL, OF ADDITIONAL FUNDING SOUGHT**

**Table 1.4: Appropriation Bill (No. 5) 2005–06**

	2005-06 Budget and Additional Estimates \$'000	2005-06 Revised Estimates \$'000	2005-06 Supplementary Additional Estimates \$'000
<b>ADMINISTERED ITEMS</b>			
<b>Outcome 1</b> - <i>The environment, especially those aspects that are matters of national environmental significance, is protected and conserved</i>	465,453	479,581	<b>14,128</b>
<b>Outcome 2</b> - <i>Australia's interests in Antarctica are advanced</i>	-	320	<b>320</b>
<b>Sub-total Administered Items</b>	<b>465,453</b>	<b>479,901</b>	<b>14,448</b>
<b>DEPARTMENTAL OUTPUTS</b>			
<b>Outcome 1</b> - <i>The environment, especially those aspects that are matters of national environmental significance, is protected and conserved</i>	233,468	234,795	<b>1,327</b>
<b>Outcome 2</b> - <i>Australia's interests in Antarctica are advanced</i>	94,563	94,563	-
<b>Sub-total Departmental Outputs</b>	<b>328,031</b>	<b>329,358</b>	<b>1,327</b>
<b>TOTAL ADMINISTERED ITEMS AND DEPARTMENTAL OUTPUTS</b>	<b>793,484</b>	<b>809,259</b>	<b>15,775</b>

DEPARTMENT OF THE ENVIRONMENT AND HERITAGE

**Table 1.5: Appropriation Bill (No. 6) 2005-06**

	2005-06 Budget and Additional Estimates (\$'000)	2005-06 Revised Estimates (\$'000)	2005-06 Supplementary Additional Estimates (\$'000)
<b>SPECIFIC PAYMENTS TO THE STATES AND TERRITORIES</b>			
<b>Outcome 1</b> - <i>The environment, especially those aspects that are matters of national environmental significance, is protected and conserved</i> <sup>(a)</sup>	33,340	33,340	-
<b>Outcome 2</b> - <i>Australia's interests in Antarctica are advanced</i>	-	-	-
<b>Sub-total specific payments to the states and territories</b>	<b>33,340</b>	<b>33,340</b>	<b>-</b>
<b>Non-Operating</b>			
Administered assets and liabilities	127	1,998	<b>1,871</b>
<b>Total administered assets and liabilities</b>	<b>127</b>	<b>1,998</b>	<b>1,871</b>
<b>DEPARTMENTAL OUTPUTS</b>			
<b>Outcome 1</b> - <i>The environment, especially those aspects that are matters of national environmental significance, is protected and conserved</i>	-	6,066	<b>6,066</b>
<b>Outcome 2</b> - <i>Australia's interests in Antarctica are advanced</i>	4,805	4,805	-
<b>Sub-total Departmental Outputs</b>	<b>4,805</b>	<b>10,871</b>	<b>6,066</b>
<b>TOTAL</b>	<b>38,272</b>	<b>46,209</b>	<b>7,937</b>

(a) Represents administered funds drawn down against Appropriation Bill (No. 2, 4 and 6) 2005-06.



**BUREAU OF METEOROLOGY  
SUPPLEMENTARY ADDITIONAL  
ESTIMATES STATEMENT**



**TABLE OF CONTENTS**

**Variations – measures and other ..... 27**

**Other variations..... 27**

Table 1.2: Supplementary additional estimates and variations to outcomes –  
other variations ..... 27

**Breakdown, by appropriation bill, of additional funding sought ..... 28**

Table 1.4: Appropriation Bill (No. 5) 2005–06.....28



**VARIATIONS – MEASURES AND OTHER**

The Australian Government will provide total funding of \$4.444m to the Bureau of Meteorology (BOM) to fund the increase in depreciation expense (\$1.619m) as a result of the recognition of make good and restitution costs in the meteorological asset base to comply with the adoption of new accounting standards (AEIFRS) and an increase in depreciation expense (\$2.825m) as a result of a 2004-05 revaluation of the meteorological asset base.

The Bureau does not have new measures for the Supplementary Additional Estimates Statement for 2005-06.

**Other variations**

**Table 1.2: Supplementary additional estimates and variations to outcomes – other variations**

	2005-06	2006-07	2007-08	2008-09
	(\$'000)	(\$'000)	(\$'000)	(\$'000)
<b>Outcome 1 - Other variations in administered appropriations</b>	-	-	-	-
<b>Total Other Variations in administered appropriations for Outcome 1</b>	-	-	-	-
<b>Outcome 1 - Other variations in departmental appropriations</b>				
Increase in depreciation expense as a result of the recognition of make good and restitution costs in the meteorological asset base to comply with the adoption of new accounting standards (AEIFRS).	1,619	1,619	1,619	1,619
Increase in depreciation expense as a result of a 2004-05 revaluation of the meteorological asset base.	2,825	-	-	-
<b>Total Other Variations in departmental appropriations for Outcome 1</b>	<b>4,444</b>	<b>1,619</b>	<b>1,619</b>	<b>1,619</b>
<b>TOTAL OTHER VARIATIONS</b>	<b>4,444</b>	<b>1,619</b>	<b>1,619</b>	<b>1,619</b>

BUREAU OF METEOROLOGY

**BREAKDOWN, BY APPROPRIATION BILL, OF ADDITIONAL FUNDING SOUGHT**

**Table 1.4: Appropriation Bill (No. 5) 2005–06**

	2005-06 Budget and Additional Estimates (\$'000)	2005-06 Revised Estimates (\$'000)	2005-06 Supplementary Additional Estimates (\$'000)
<b>ADMINISTERED ITEMS</b>			
<b>Outcome 1 - Australia benefits from meteorological and related science and services</b>	-	-	-
<b>Sub-total Administered Items</b>	-	-	-
<b>DEPARTMENTAL OUTPUTS</b>			
<b>Outcome 1 - Australia benefits from meteorological and related science and services</b>	206,726	211,170	4,444
<b>Sub-total Departmental Outputs</b>	<b>206,726</b>	<b>211,170</b>	<b>4,444</b>
<b>TOTAL ADMINISTERED ITEMS AND DEPARTMENTAL OUTPUTS</b>	<b>206,726</b>	<b>211,170</b>	<b>4,444</b>

**DIRECTOR OF NATIONAL PARKS  
SUPPLEMENTARY ADDITIONAL  
ESTIMATES STATEMENT**



## TABLE OF CONTENTS

<b>Variations – measures and other .....</b>	<b>33</b>
Table 1.1: Supplementary additional estimates and variations to outcomes – measures.....	33
<b>Other variations.....</b>	<b>34</b>
<b>Measures – Agency summary .....</b>	<b>35</b>
Table 1.3: Summary of measures since Portfolio Additional Estimates Statements 2005–06 .....	35
<b>Breakdown, by appropriation bill, of additional funding sought .....</b>	<b>36</b>
Table 1.4: Appropriation Bills (No. 5 and 6) 2005–06 and Other Revenue from Government.....	36



## VARIATIONS – MEASURES AND OTHER

The Australian Government has undertaken to provide funding of \$7.220m to the Department of the Environment and Heritage (DEH) for payment to the Director of National Parks (DNP). This increase relates to funding for Kakadu and Uluru-Kata Tjuta National Parks – tourism infrastructure and equipment, provided for the initial stages of implementation of a major new strategic direction for tourism in Kakadu National Park and to assist in addressing increasing risks to both visitor amenity and safety, and cultural conservation within Uluru-Kata Tjuta National Park and Kakadu National Park.

DNP does not receive any direct appropriation from the Government. The additional funding will be appropriated to DEH in 2005–06 through *Appropriation Bills (No. 5 and 6) 2005–06* and transferred to DNP.

**Table 1.1: Supplementary additional estimates and variations to outcomes—measures**

	2005-06	2006-07	2007-08	2008-09
	(\$'000)	(\$'000)	(\$'000)	(\$'000)
<b>Outcome 1 - Capital Measures</b>				
Kakadu and Uluru-Kata Tjuta National Parks - tourism infrastructure and equipment	6,066	-	-	-
<b>Total Capital Measure</b>	<b>6,066</b>	-	-	-
<b>Outcome 1 - Measures variations in departmental appropriations</b>				
Kakadu and Uluru-Kata Tjuta National Parks - tourism infrastructure and equipment	1,154	-	-	-
<b>Increase in departmental appropriations for Outcome 1 - measures</b>	<b>1,154</b>	-	-	-
<b>TOTAL MEASURES VARIATIONS</b>	<b>7,220</b>	-	-	-

**Note:** There is no direct appropriation from the government to DNP. Funds are appropriated directly to DEH and transferred to DNP.

**Other variations**

There are no other variations for DNP in the 2005-06 Portfolio Supplementary Additional Estimates.

## MEASURES – DIRECTOR OF NATIONAL PARKS SUMMARY

**Table 1.3: Summary of measures since Portfolio Additional Estimates Statements 2005-06**

Measure Title	Outcome	Outputs affected	Appropriations 2005-06			Appropriations 2006-07			Appropriations 2007-08			Appropriations 2008-09		
			Admin expenses	Dept outputs	Total	Admin expenses	Dept outputs	Total	Admin expenses	Dept outputs	Total	Admin expenses	Dept outputs	Total
<b>Expense Measures:</b>			(\$'000)	(\$'000)	(\$'000)	(\$'000)	(\$'000)	(\$'000)	(\$'000)	(\$'000)	(\$'000)	(\$'000)	(\$'000)	(\$'000)
Kakadu and Uluru-Kata Tjuta National Parks - tourism infrastructure and equipment	1	1.2	-	1,154	<b>1,154</b>	-	-	-	-	-	-	-	-	-
Kakadu and Uluru-Kata Tjuta National Parks - tourism infrastructure and equipment - capital injection	1	1.2	-	6,066	<b>6,066</b>	-	-	-	-	-	-	-	-	-
<b>Total Expense Measures</b>			-	<b>7,220</b>	<b>7,220</b>	-	-	-	-	-	-	-	-	-

**BREAKDOWN, BY APPROPRIATION BILL, OF ADDITIONAL FUNDING SOUGHT**

**Table 1.4: Appropriation Bills (No. 5 and 6) 2005-06 and Other Revenue from Government**

	2005-06 Budget and Additional Estimates (\$'000)	2005-06 Revised Estimates (\$'000)	2005-06 Supplementary Additional Estimates (\$'000)
<b>DEPARTMENTAL OUTPUTS</b>			
<b>Outcome 1 - <i>The environment, especially those aspects that are matters of national environmental significance, is protected and conserved</i></b>	40,808	48,028	7,220
<b>Sub-total Departmental Outputs</b>	<b>40,808</b>	<b>48,028</b>	<b>7,220</b>

**Note:** There is no direct appropriation from government to the DNP. Funds are appropriated directly to DEH and transferred to the DNP.