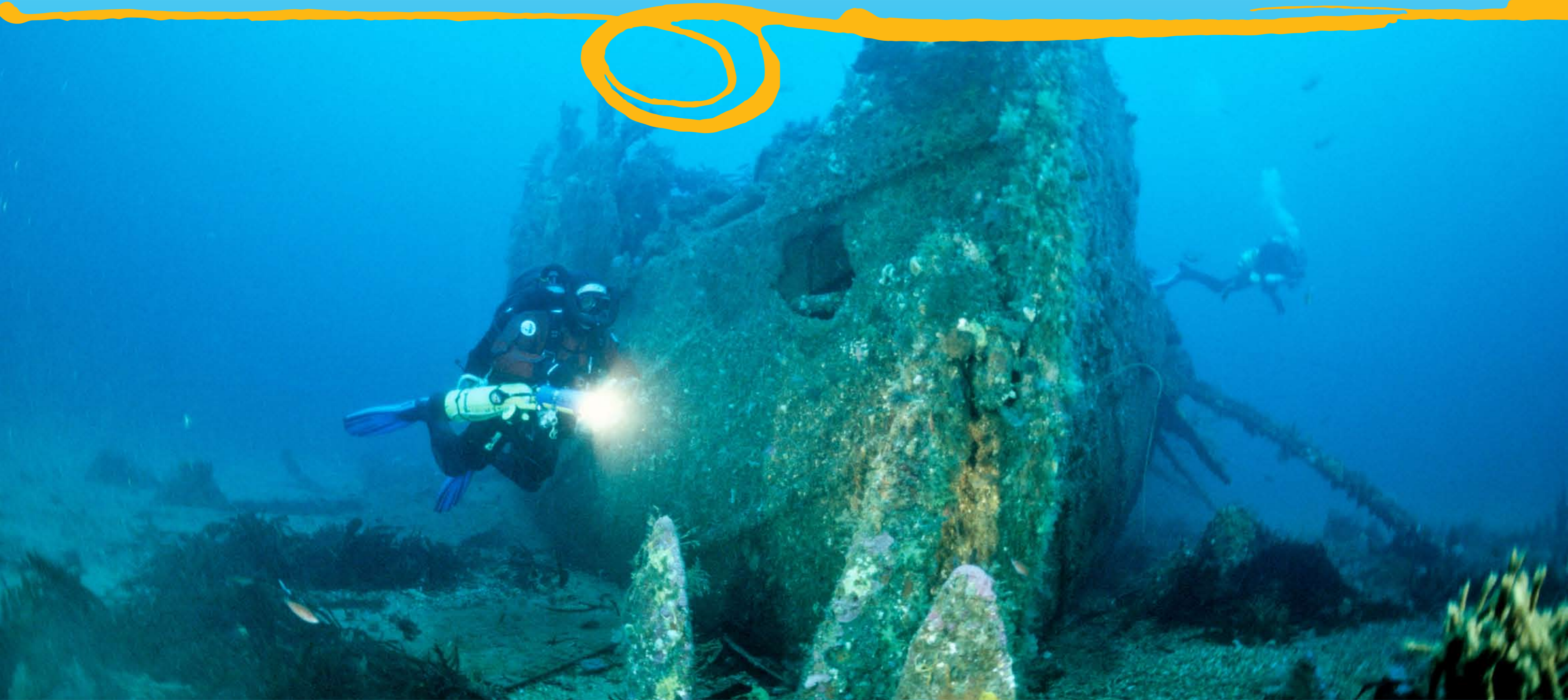




Australian Government

# Australia's Maritime Heritage



See wondrous things  
dive Australia's historic shipwrecks

[www.environment.gov.au/heritage/shipwrecks](http://www.environment.gov.au/heritage/shipwrecks)

Image credits left to right:  
SS Nord (1915) Tasmania, Mark Spencer (Main image). Underwater shipwreck trail interpretive plaque Wardang Island, South Australia, Heritage South Australia; Marie Gabrielle's anchors (1869) Victoria, John Baker; HMAS Sydney II's - lifeboats (1942) Western Australia, The Finding Sydney Foundation; SS Florence D (1942) Northern Territory, Northern Territory Heritage Branch; HMCS Mermaid's kedge anchor (1829), Queensland, Xanthe Rivett, Australian National Maritime Museum; The melancholy loss of His Majesty's Ship Sirius, wrecked on Norfolk Island drawing by George Raper 1790, Norfolk Island, Natural History Museum, United Kingdom; and SS Kelloe (1902), New South Wales, Mark Spencer.