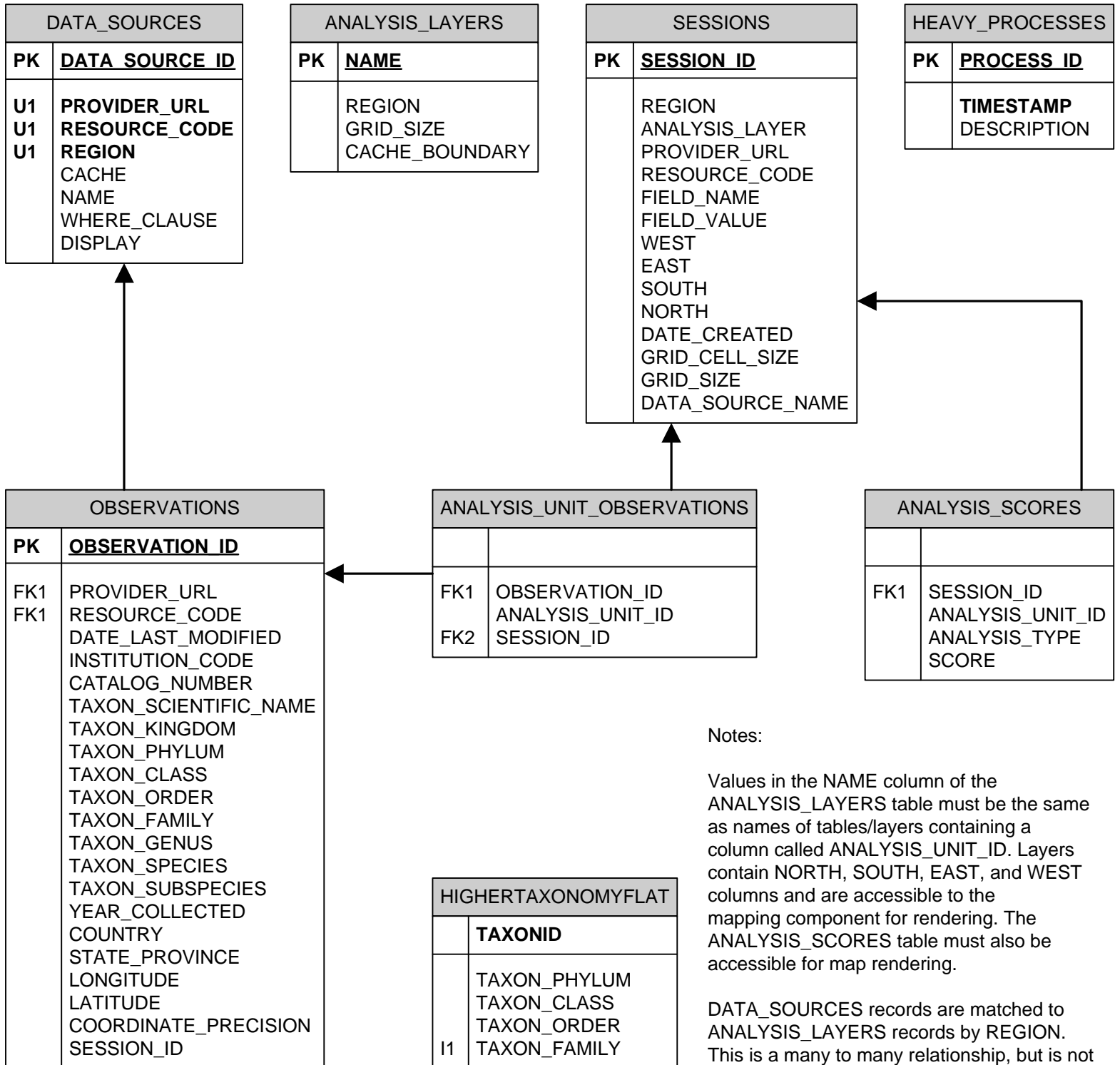


Data Model for BAT

Bryn Honeyman, Department of the Environment and Heritage 2005



Notes:

Values in the NAME column of the ANALYSIS_LAYERS table must be the same as names of tables/layers containing a column called ANALYSIS_UNIT_ID. Layers contain NORTH, SOUTH, EAST, and WEST columns and are accessible to the mapping component for rendering. The ANALYSIS_SCORES table must also be accessible for map rendering.

DATA_SOURCES records are matched to ANALYSIS_LAYERS records by REGION. This is a many to many relationship, but is not enforced by any database constraints.