

# Incentives and Strategic Investment

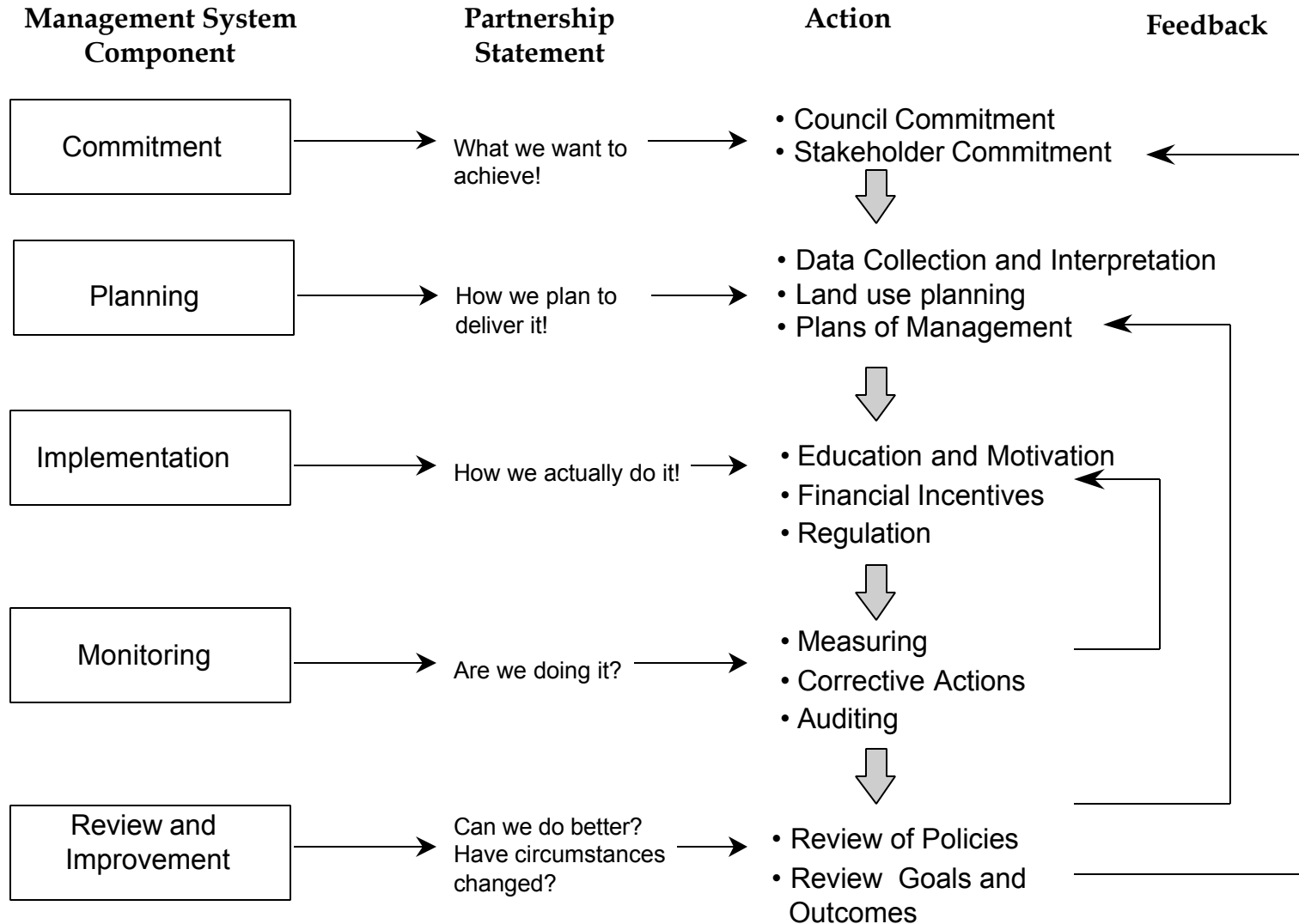
Adaptive management

Reaching the Community

Achieving NRM Outcomes



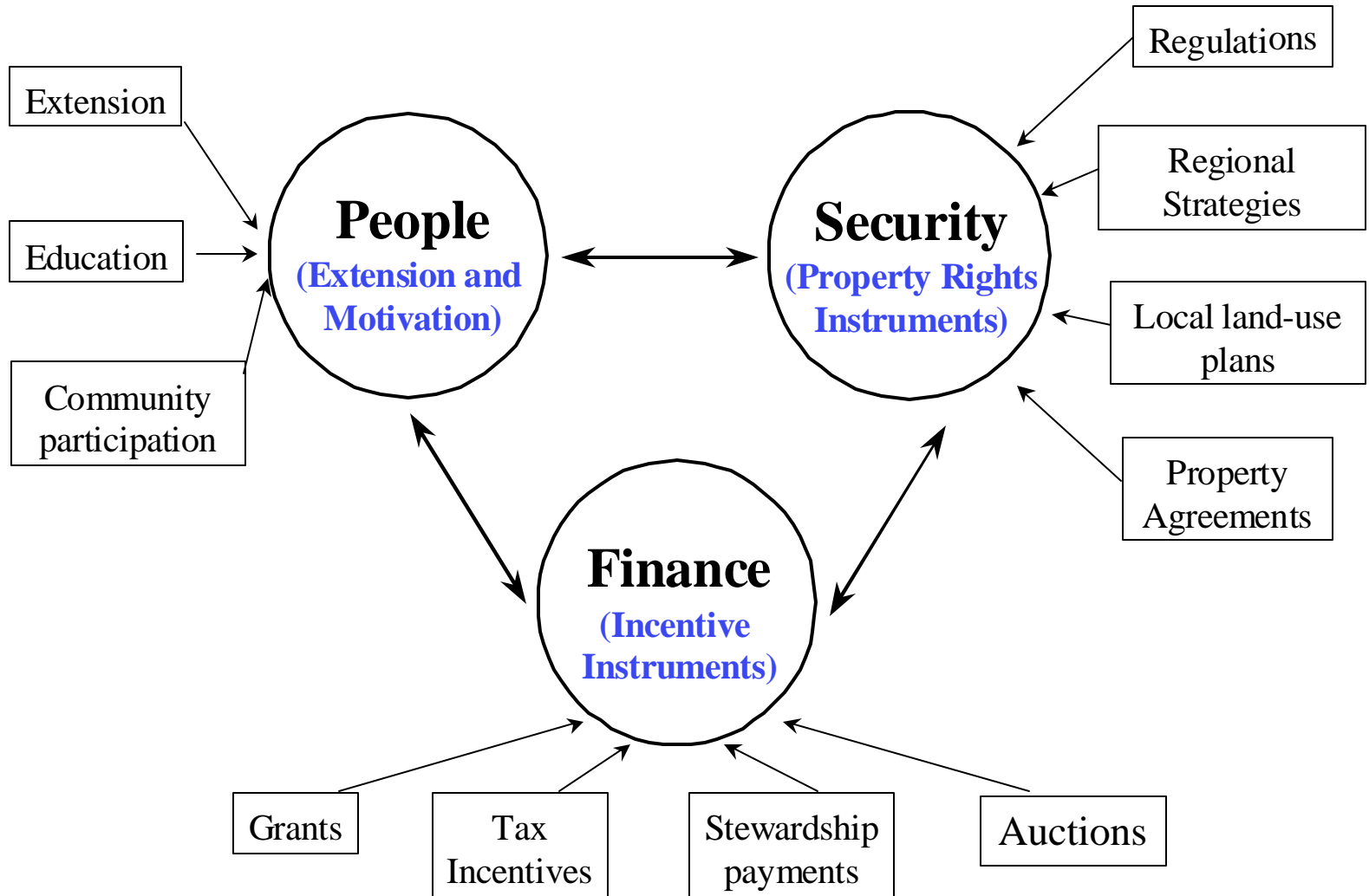
# Adaptive Management



## ***Structure***

- Key Principles of Incentive Design
- Adaptive Management Framework
- Dynamics
  - Feedback
  - The tyranny of time and strategy

# Principals of policy design





# *People Awareness and Motivation*

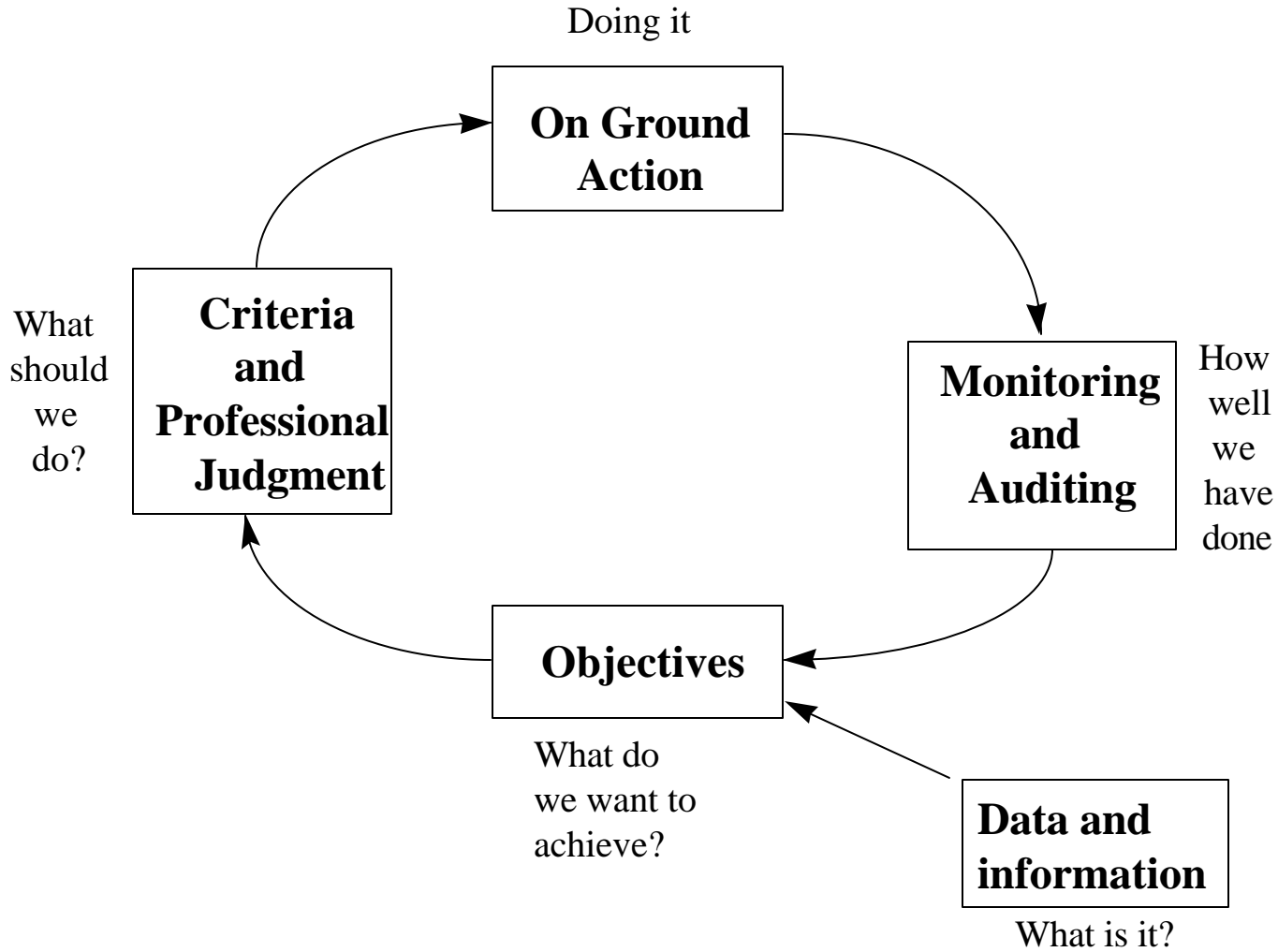
- Objective: Stewardship
  - A Partnership for Life
- Extension
  - One-on-One Interaction
- Education
  - Decision makers and schools
- Community Participation
  - Engaging with nature



## *Finance - Incentives*

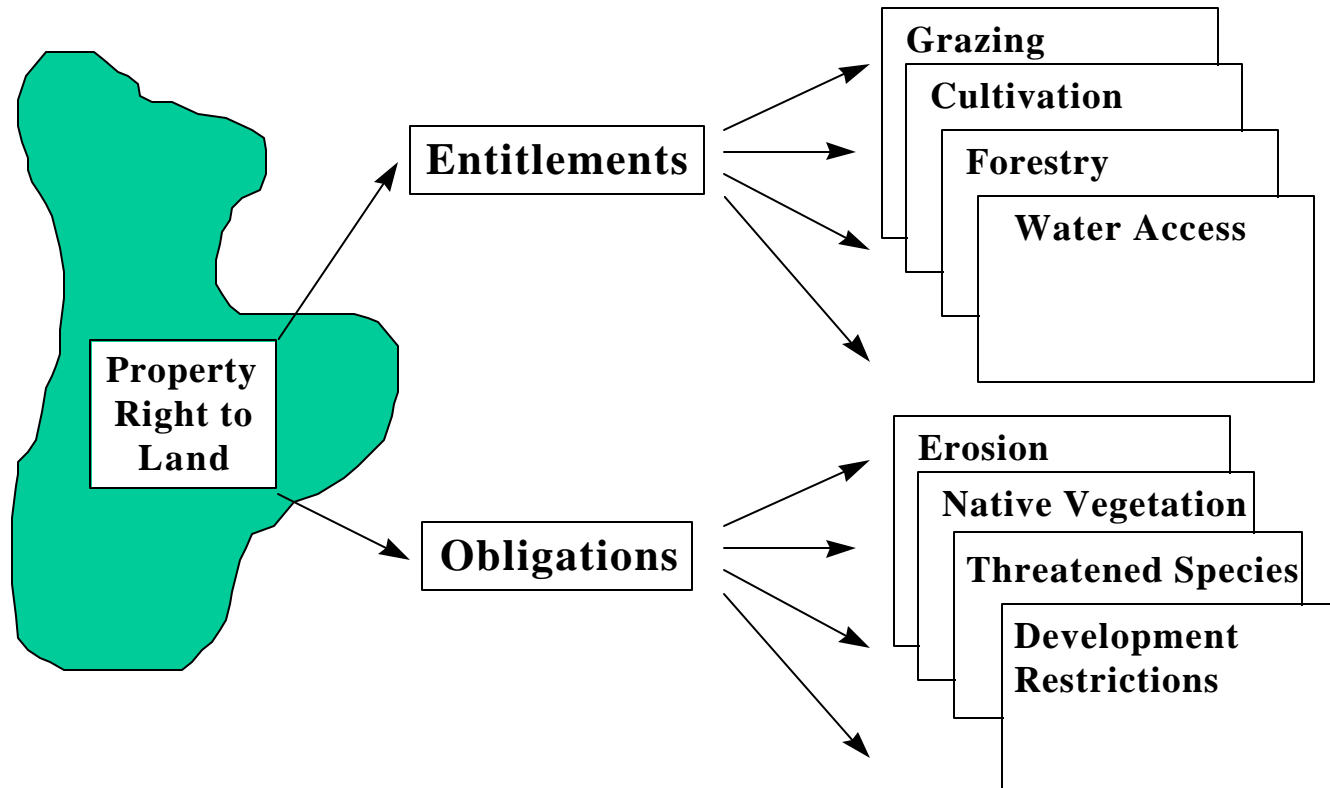
- Community grants
- Catalytic incentives
- Cost sharing incentives
- Stewardship payments
- Tax incentives
- Transition incentives
- Auctions and tenders
- Cap and trade
- Environmental markets

# Security: Setting Environmental Priorities



# Security

## Defining Property Rights





# *Security*

## *Property rights in practice*

**Grazing**

**Cultivation**

**Forestry**

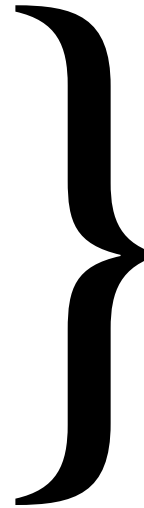
**Water Access**

**Erosion**

**Native Vegetation**

**Threatened Species**

**Development Restrictions**



**Legislation and Regulations**



**Implementation Agencies and Programs**



**Enforcement Characteristics**

# Security

## State Based Tools NSW

	<b>Legislation</b>	<b>Agencies with Statutory Functions</b>
<b>Land -Use Planning</b>	<ul style="list-style-type: none"> <li>• Environment Planning and Assessment Act</li> <li>• Local Government Act</li> <li>• Catchment Act</li> </ul>	<ul style="list-style-type: none"> <li>• Department of Urban Affairs and Planning</li> <li>• Department of Local Government</li> <li>• Local Governments</li> </ul>
<b>Rural Land Management</b>	<ul style="list-style-type: none"> <li>• Catchment Management Act</li> <li>• Crown Lands Act</li> <li>• Native Vegetation Conservation Act</li> <li>• Rural Lands and Protection Act</li> <li>• Water Lands Act</li> </ul>	<ul style="list-style-type: none"> <li>• Department of Land and Water Conservation</li> <li>• Environment Protection Authority</li> <li>• Catchment Management Committees</li> <li>• Proposed “Community Based Committees’ water reform</li> <li>• Regional Vegetation Committees</li> <li>• Rural Lands Protection Boards</li> <li>• Soils Conservation Commissioner</li> <li>• Western Lands Commissioner</li> </ul>
<b>Nature Conservation</b>	<ul style="list-style-type: none"> <li>• National Parks and Wildlife Act</li> <li>• Threatened Species Act</li> </ul>	<ul style="list-style-type: none"> <li>• New South Wales Parks and Wildlife Service</li> </ul>

# Security

## Regional and Local Tools

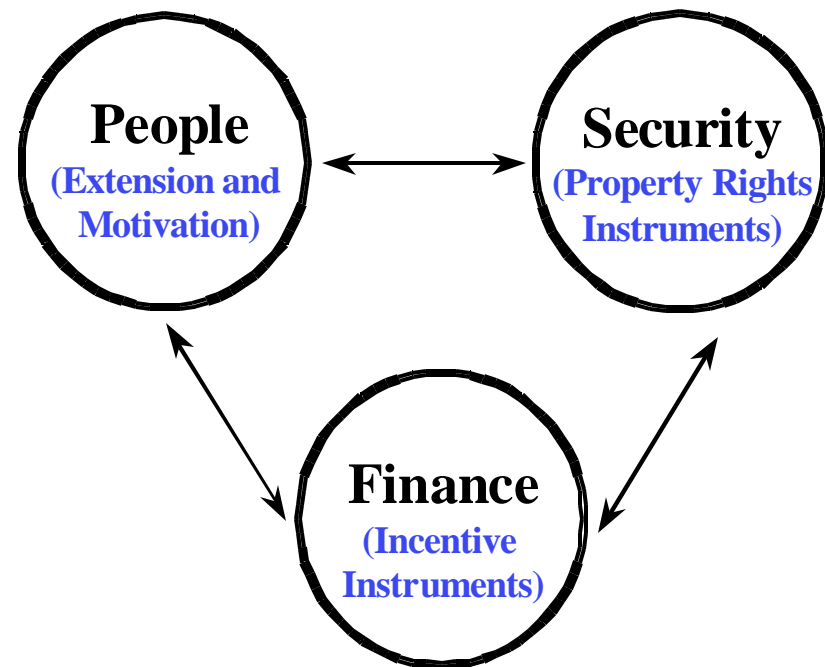
Strategic Planning	Local Planning	Re-zoning
<ul style="list-style-type: none"> <li>• Regional NRM plan</li> <li>• Regional Investment Strategy</li> <li>• Development and settlement planning</li> <li>• Regional policy statements</li> <li>• Pest and fire management</li> <li>• Off-sets policies</li> </ul>	<ul style="list-style-type: none"> <li>• Vegetation protection By-laws</li> <li>• Open space, local reserve and recreation management</li> <li>• Development incentives</li> </ul>	<ul style="list-style-type: none"> <li>• Voluntary</li> <li>• Back-zoning</li> <li>• Acquisition</li> <li>• Revolving funds</li> </ul>

# *Security*

## *Property scale*

- Management Agreements
  - Non-Binding (Land for Wildlife)
  - Fixed Term (10 year contract)
  - Conservation covenant
- Voluntary: securing stewardship
- Obligations on government too
  - Matching security to objective

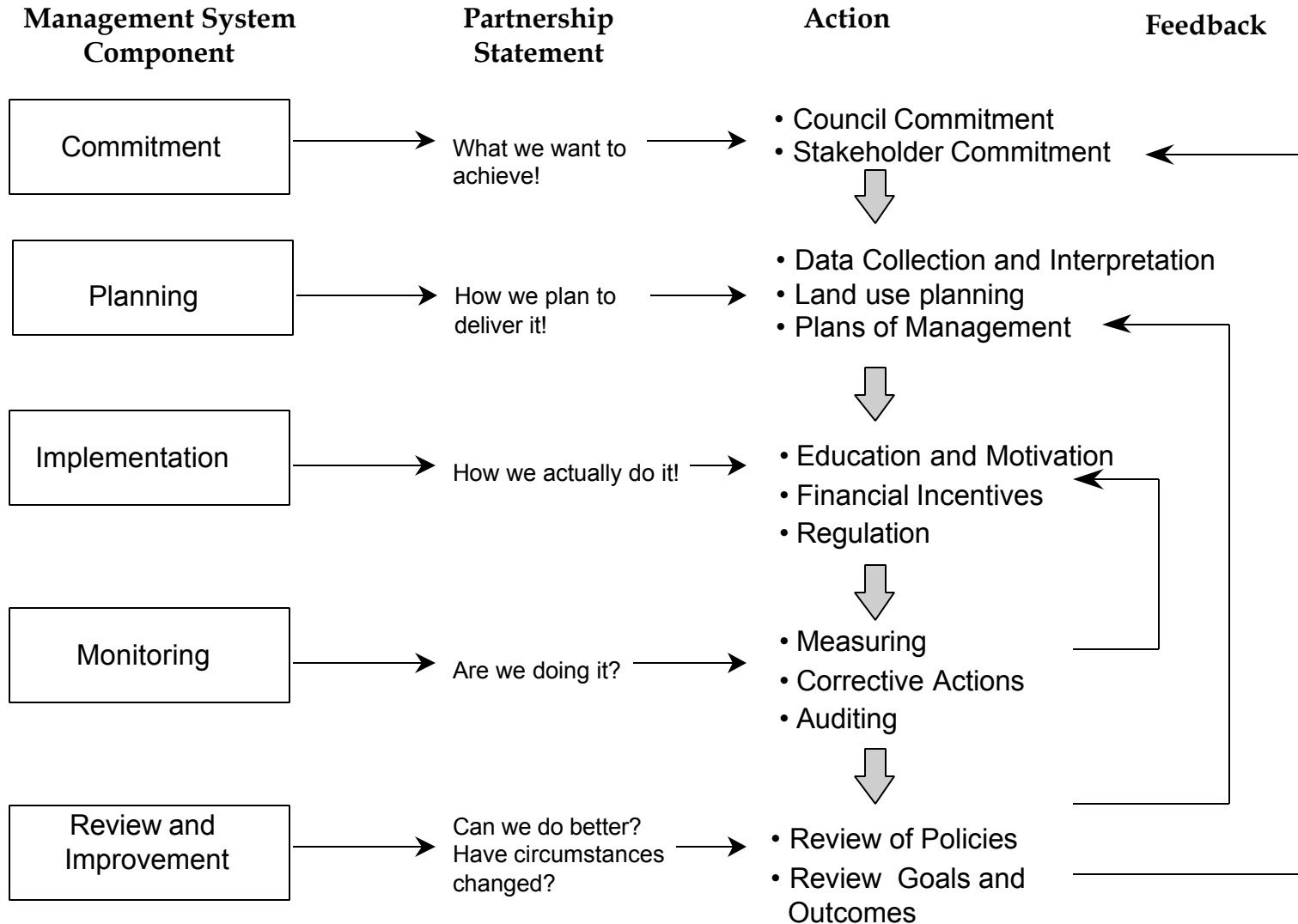
- Urgent
  - Regulate, compensate, engage
  - Strong Political will and Big budgets required
- Action Oriented
  - Targeted investment, engage, secure property rights
  - Requires clear priorities + Budget
- Empowerment
  - Engage, share costs, secure property rights
  - Full ownership of objectives but slow



## *Structure*

- Key Principles of Incentive Design
- Adaptive Management Framework
- Dynamics
  - Feedback
  - The tyranny of time and strategy

# Adaptive Management



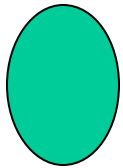
## *Structure*

- Key Principles of Incentive Design
- Adaptive Management Framework
- Dynamics
  - Feedback
  - The tyranny of time and strategy

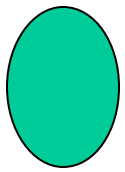


Greening Australia

# *Relationship between time and scale: Year 1*



*Relationship between time and scale: Year 3*





Greening Australia

# *Relationship between time and scale: Year 5*







Greening Australia

## *Conclusions*

### *Some tips*

- Understand your status - Do you understand:
  - Biophysical issues (biodiversity, salinity etc)
  - Your community (esp. land managers)
  - Your capacity
- What is your budget?
- Strengths of existing programs
- Build from where you are!
- Focus on improvement over time

# Adaptive Management

