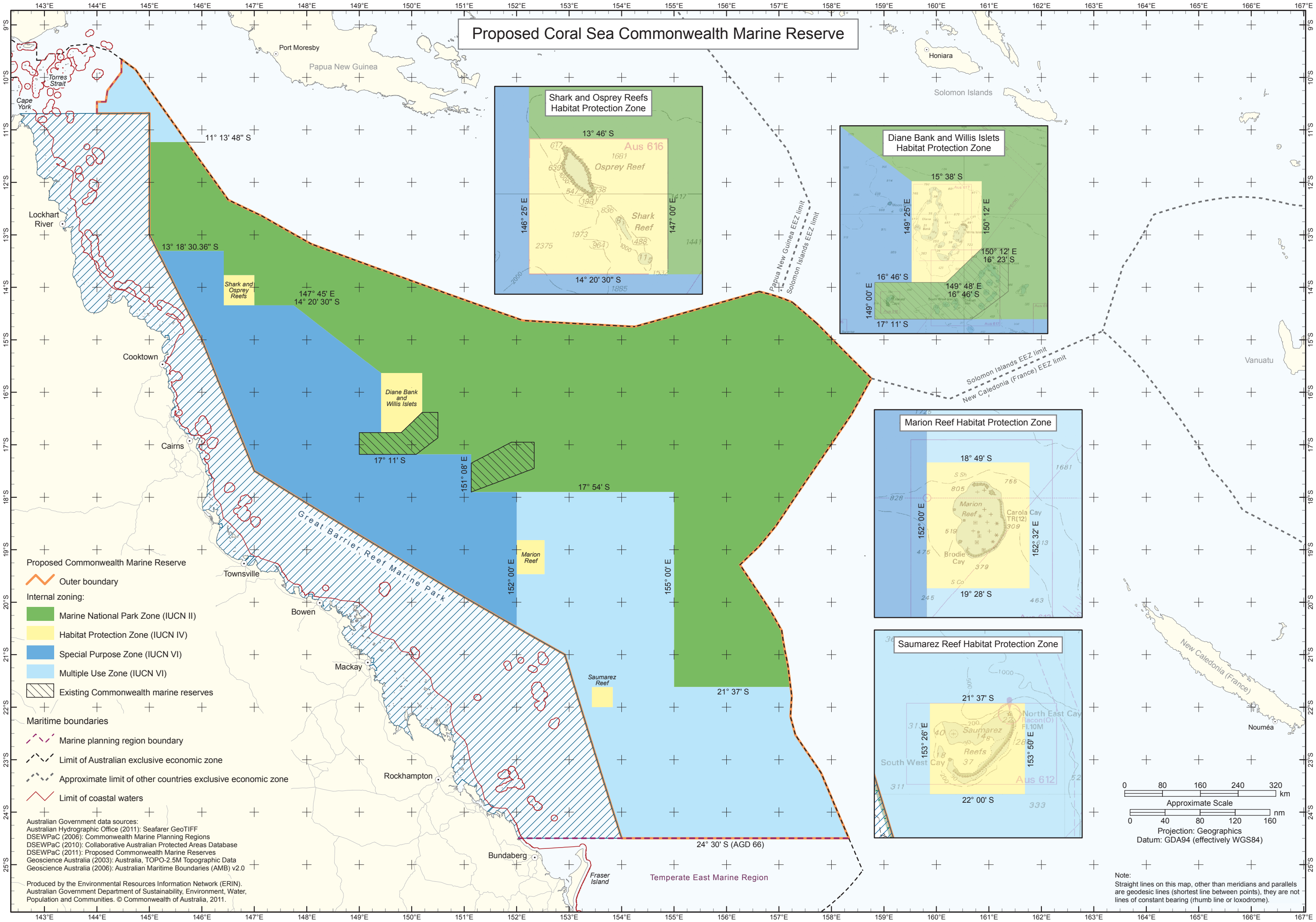


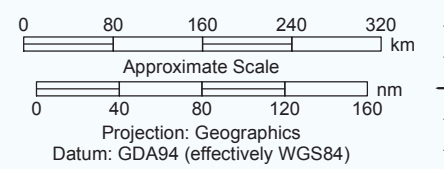
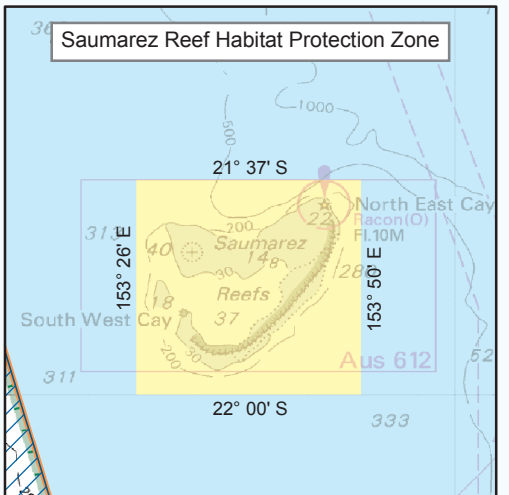
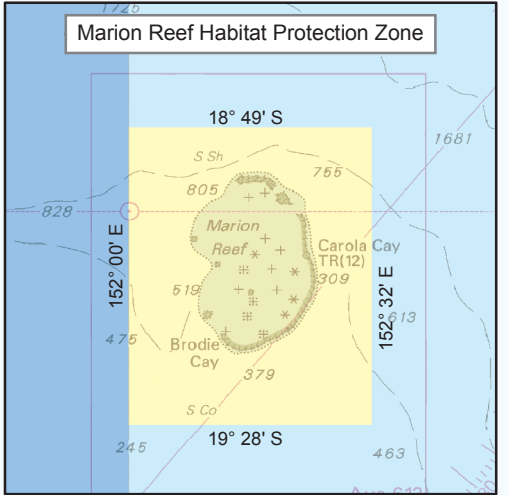
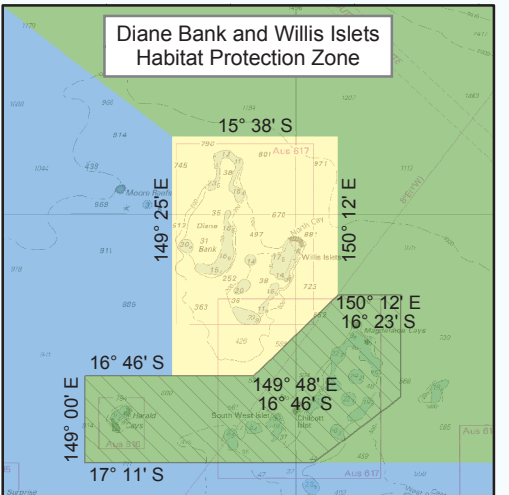
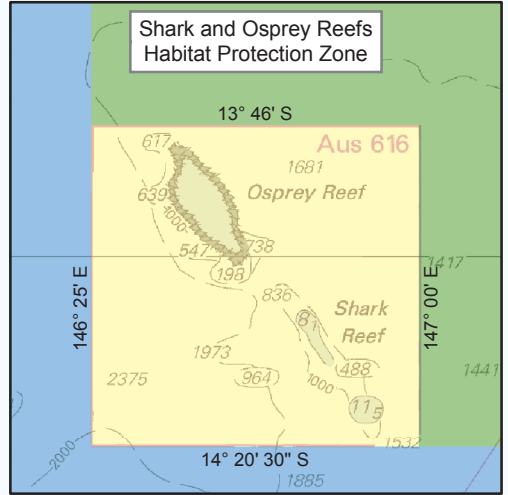
Proposed Coral Sea Commonwealth Marine Reserve



- Proposed Commonwealth Marine Reserve**
- Outer boundary
- Internal zoning:**
- Marine National Park Zone (IUCN II)
 - Habitat Protection Zone (IUCN IV)
 - Special Purpose Zone (IUCN VI)
 - Multiple Use Zone (IUCN VI)
 - Existing Commonwealth marine reserves
- Maritime boundaries**
- Marine planning region boundary
 - Limit of Australian exclusive economic zone
 - Approximate limit of other countries exclusive economic zone
 - Limit of coastal waters

Australian Government data sources:
 Australian Hydrographic Office (2011): Seafarer GeoTIFF
 DSEWPaC (2006): Commonwealth Marine Planning Regions
 DSEWPaC (2010): Collaborative Australian Protected Areas Database
 DSEWPaC (2011): Proposed Commonwealth Marine Reserves
 Geoscience Australia (2003): Australia, TOPO-2.5M Topographic Data
 Geoscience Australia (2006): Australian Maritime Boundaries (AMB) v2.0

Produced by the Environmental Resources Information Network (ERIN).
 Australian Government Department of Sustainability, Environment, Water,
 Population and Communities. © Commonwealth of Australia, 2011.



Note:
 Straight lines on this map, other than meridians and parallels
 are geodesic lines (shortest line between points), they are not
 lines of constant bearing (rhumb line or loxodrome).