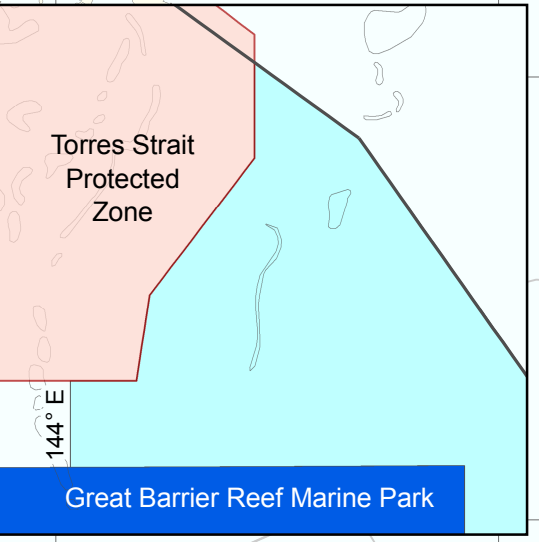
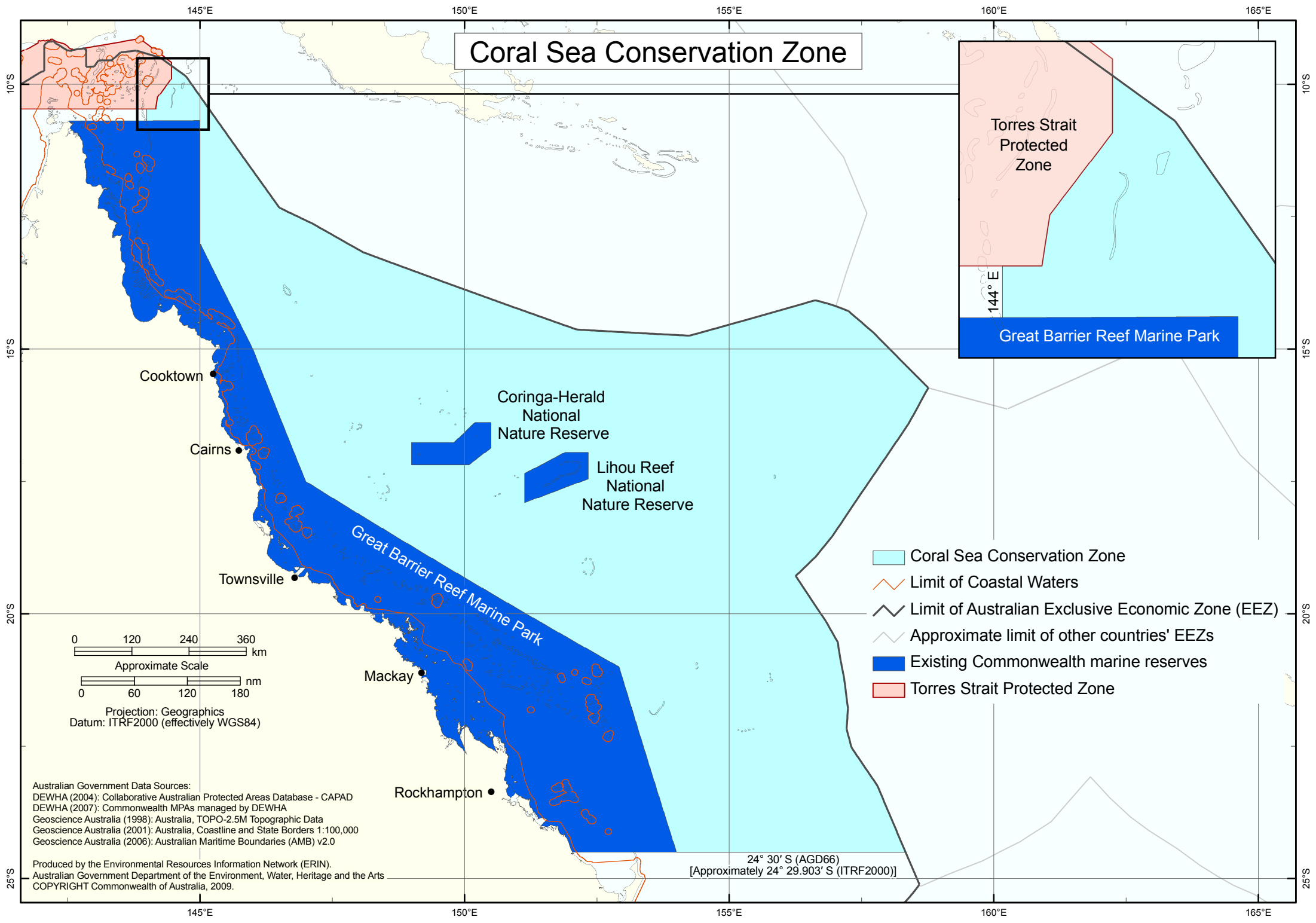


Coral Sea Conservation Zone



- Coral Sea Conservation Zone
- Limit of Coastal Waters
- Limit of Australian Exclusive Economic Zone (EEZ)
- Approximate limit of other countries' EEZs
- Existing Commonwealth marine reserves
- Torres Strait Protected Zone

0 120 240 360 km
 Approximate Scale
 0 60 120 180 nm
 Projection: Geographics
 Datum: ITRF2000 (effectively WGS84)

Australian Government Data Sources:
 DEWHA (2004): Collaborative Australian Protected Areas Database - CAPAD
 DEWHA (2007): Commonwealth MPAs managed by DEWHA
 Geoscience Australia (1998): Australia, TOPO-2.5M Topographic Data
 Geoscience Australia (2001): Australia, Coastline and State Borders 1:100,000
 Geoscience Australia (2006): Australian Maritime Boundaries (AMB) v2.0

Produced by the Environmental Resources Information Network (ERIN).
 Australian Government Department of the Environment, Water, Heritage and the Arts
 COPYRIGHT Commonwealth of Australia, 2009.

24° 30' S (AGD66)
 [Approximately 24° 29.903' S (ITRF2000)]