



Australian Government

Department of the Environment,
Water, Heritage and the Arts

Issue #4 September 2009

SOUTH-WEST MARINE BIOREGIONAL PLANNING UPDATE

Welcome to the fourth issue of stakeholder *Updates* for the south-west marine region. *Update* is produced periodically and is available on the South-West Marine Bioregional Planning stakeholder page at: www.environment.gov.au/coasts/mbp/south-west/stakeholders.html

Stakeholder consultation

The Department of the Environment, Water, Heritage and the Arts has identified seven Areas for Further Assessment (AFAs) within the south-west marine region on which to focus its efforts to collect finer scale information. These included Western Eyre, Great Australian Bight, Recherche, South-West Corner, Perth Canyon, Jurien and the Abrolhos areas. For more information, please see: www.environment.gov.au/coasts/mbp/publications/south-west/pubs/areas-for-assessment.pdf.

The Areas were released for stakeholder input and comment in May. The release was coupled with a comprehensive consultation process with key industry and stakeholder groups. A key objective of this non-statutory stage of consultation is to refine our scale of our data and to better understand key interests within these Areas prior to the development of a draft Marine Bioregional Plan.

On the 18 and 27 May information sessions were held in Perth and Adelaide respectively to provide an industry wide update on the development of the South-West Marine Plan and the location and identification process involving the AFAs.

Following this, meetings were held with stakeholder groups to better understand their interests and refine the level of data available in the AFAs. The department met with stakeholder groups from relevant industries including commercial fishers, recreational fishers, the conservation sector, petroleum, ports and shipping.

Consultation has been ongoing and through the meetings the south-west liaison officers have identified further parties to engage with. Applicable Native Title claimants whose claims intersect with the AFAs have been notified and invited to comment. Consultation will continue until the end of September.



Development in the identification of Marine Protected Areas

Through this initial round of consultation, a range of information and data has been collected. The input gathered through the consultation will be used in the next phase of the reserve design analysis, when draft reserve boundaries and different zonings will be determined. Data from industry and interest groups will assist in identifying options for Marine Protected Areas that minimise costs from the perspective of impacts on current users. The development of the proposed network for the south-west marine region, as part of the draft Marine Bioregional Plan, will be completed before the end of 2009.

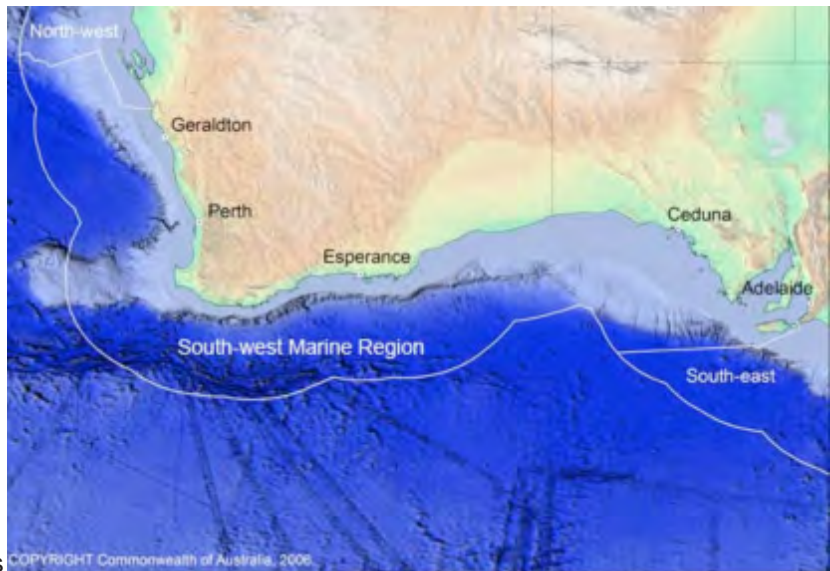
Displacement policy

A process to design a displacement policy framework is underway and set to be finalised by the end of September. The process will include principles and directions for addressing potential impacts arising from the declaration of new marine reserves including the displacement of existing activities. An advisory group made up of representatives from relevant stakeholder sectors has been formed to support the process while a government steering group will provide a whole of government policy input.

What's next?

We are looking to complete the draft South-West Marine Bioregional Plan towards the end of 2009, including an assessment of the impacts of the proposed marine reserves network upon current uses.

The draft Plan will be available for further comments for a statutory consultation period at least 60 days. At this stage, information sessions and extensive consultation will occur to discuss the contents of the draft Plan and seek comment and input from each sector prior to finalising the Plan.



Further comments or information can be obtained by emailing the south-west team at SW_marine_plan@environment.gov.au

