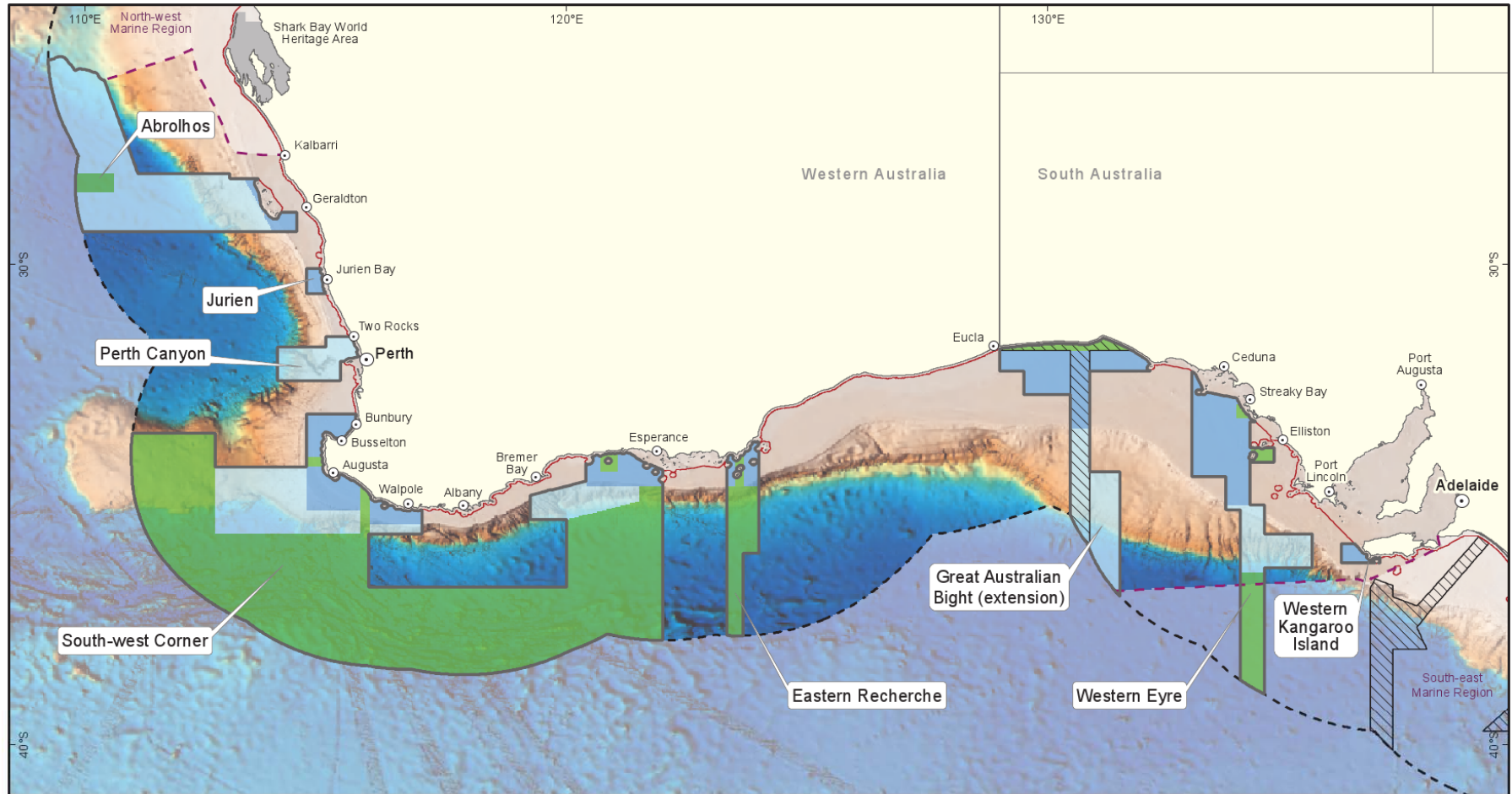




Proposed South-west Commonwealth Marine Reserve Network - Factsheet



Proposed Commonwealth marine reserve network

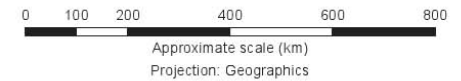
- Outer boundaries
- Internal zoning:**
- Marine National Park (IUCN II)
- Special Purpose Zone (IUCN VI)
- Multiple Use Zone (IUCN VI)

Other protected areas

- Existing Commonwealth marine reserves
- Shark Bay World Heritage Area

Maritime boundaries

- Marine planning region boundaries
- Limit of Australian exclusive economic zone
- Limit of coastal waters



Australian Government Data Sources:
 DSEWPac (2011): Proposed Commonwealth Marine Reserves
 Geoscience Australia (2006): Australian Maritime Boundaries (AMB) v2.
 Geoscience Australia (2004): Australia, Coastline and State Borders 1:100,000
 DSEWPac (2007): Australia, World Heritage Areas
 Geoscience Australia (2005): Australian Bathymetry and Topography

Produced by the Environmental Resources Information Network (ERIN)
 Australian Government Department of Sustainability, Environment, Water, Population and Communities. © Commonwealth of Australia, 2011.

Overview of proposed zoning scheme for the South-west Commonwealth Marine Reserve Network

Activity	Marine National Park Zone (IUCN Category II)	Multiple Use Zone (IUCN Category VI)	Special Purpose Zone (IUCN Category VI)
Recreational fishing ^a	✘	✓	✓
Recreational scuba diving and snorkelling ^b	✓	✓	✓
Research and monitoring ^b	✓	✓	✓
Tourism, including dive/snorkel tours, nature watching ^b	✓	✓	✓
Mining, including petroleum exploration and development ^c	✘	✓	✓
Shipping ^d	✓	✓	✓
Charter fishing ^e	✘	✓	✓
Offshore aquaculture ^e	✘	✓	✓
Commercial fishing (except as indicated below) ^e	✘	✓	✓
— demersal trawl	✘	✘	✘
— demersal gillnet	✘	✘	✓
— demersal longline	✘	✘	✓
a	Recreational fishing is managed by the states. All state rules and regulations (e.g. size and bag limits) will apply in Commonwealth marine reserves unless otherwise specified in statutory management plans		
b	Approval will be required for these activities (e.g. registration, general approval or individual permit) in Marine National Park Zones (IUCN Category II)		
c	As currently applies, individual project assessment and approval is required by the Director of National parks and under the <i>Environment Protection and Biodiversity Conservation Act 1999</i> as Commonwealth marine areas are protected as a matter of national environmental significance.		
d	Ballast water exchange is managed under national arrangements. Restrictions may apply in sensitive areas.		
e	Approval will be required for these activities (e.g. registration, general approval or individual permit) in multiple use and special purpose zones		