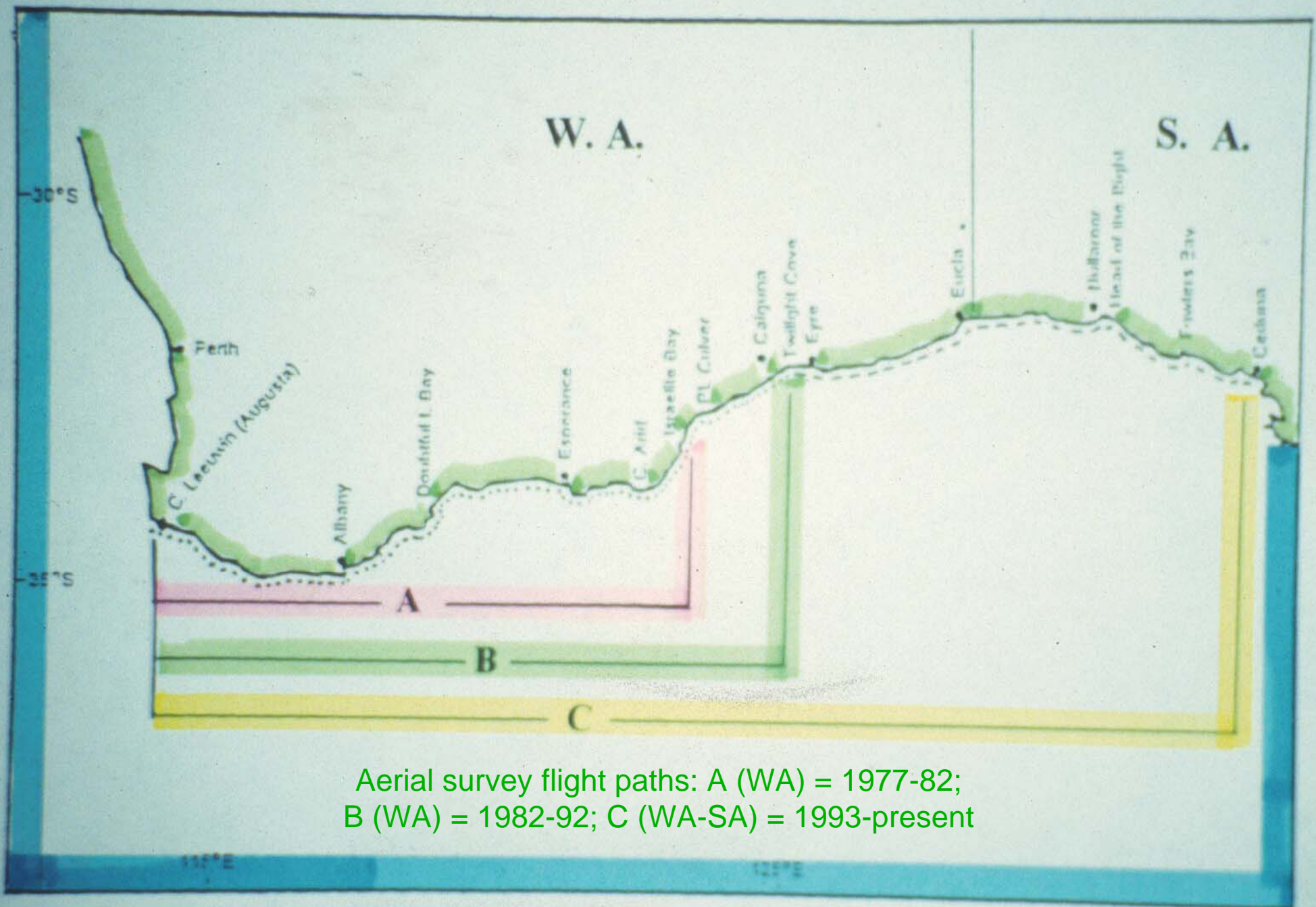
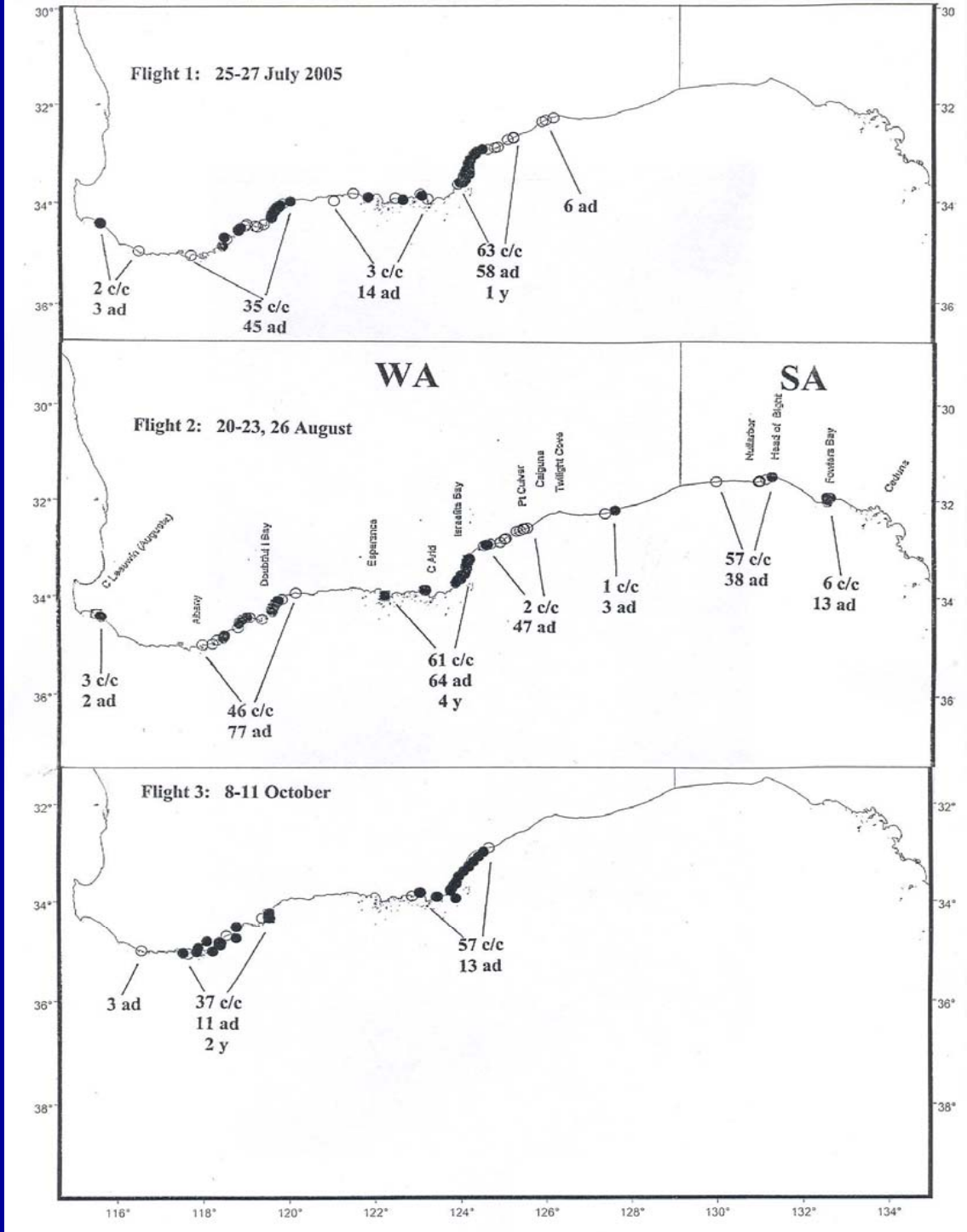




# RIGHT WHALES OFF SOUTHERN AUSTRALIA (C Leeuwin WA-Ceduna SA)

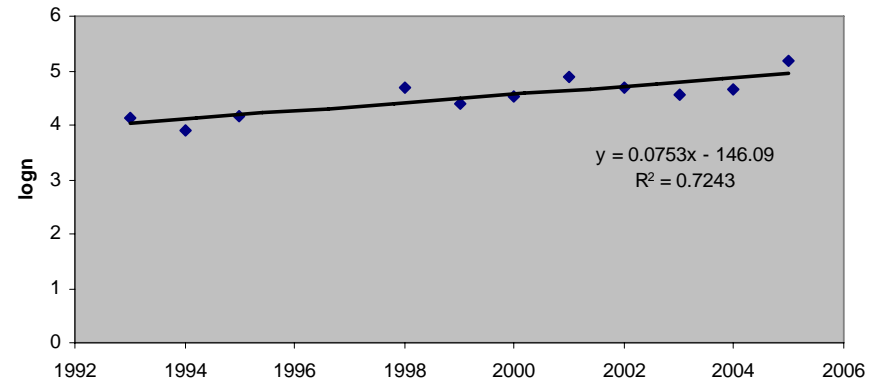
John Bannister  
WA Museum



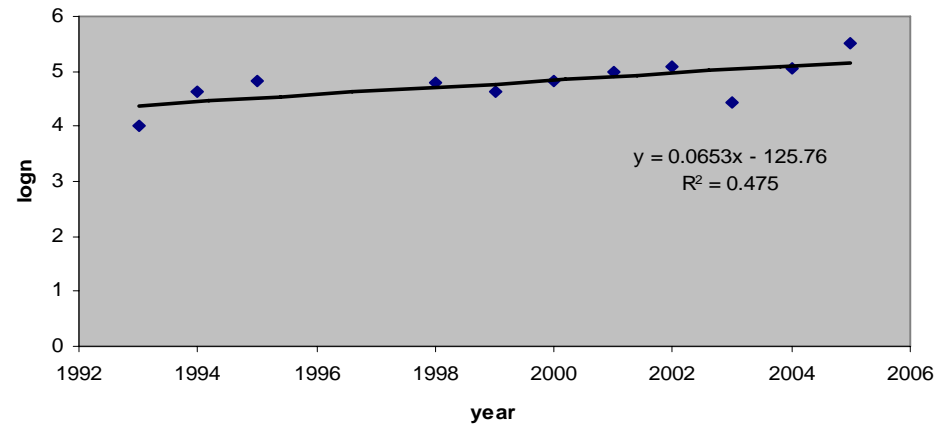


Aerial survey, WA-SA, 2005, approximate sighting positions

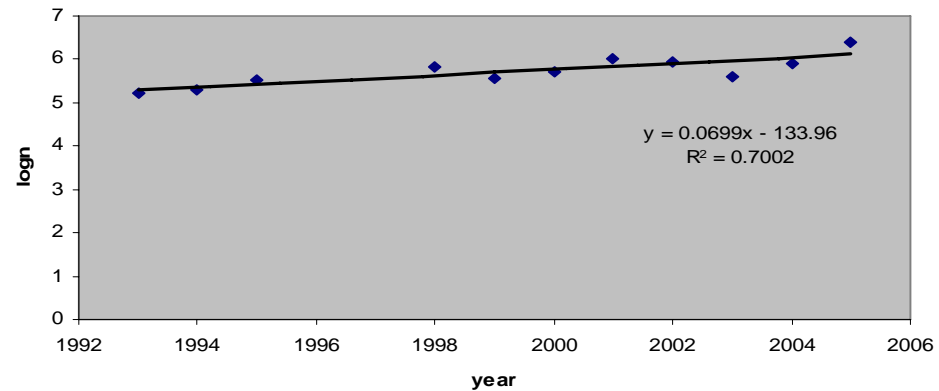
(a) C/c prs



(b) unaccompanied animals



(c) all animals



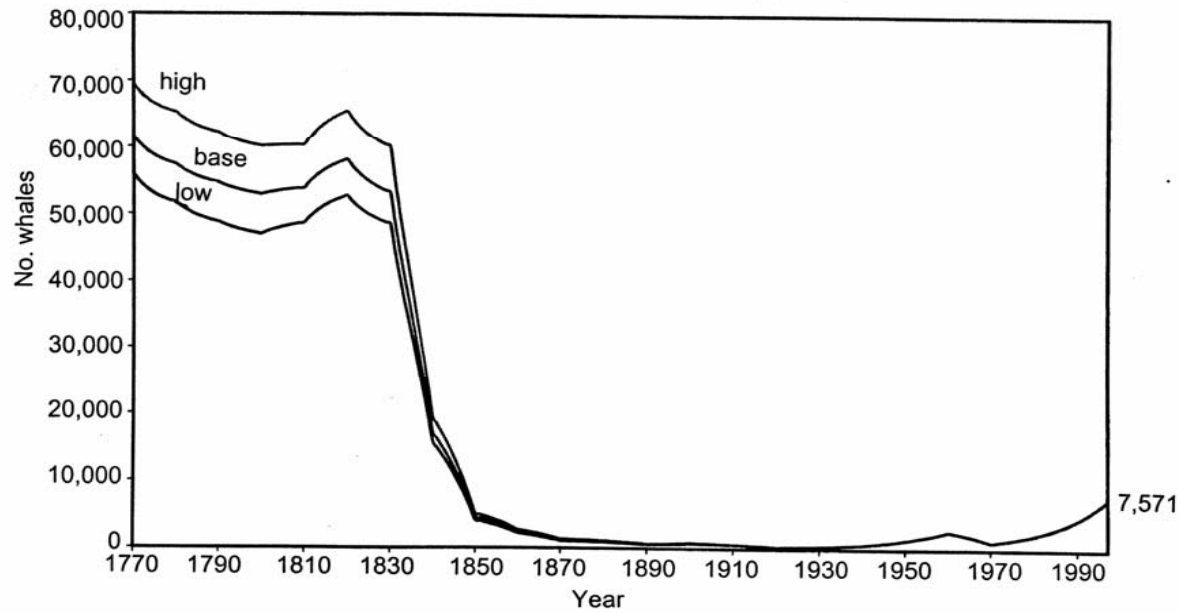


Fig. 6. Total population size (all Southern Hemisphere combined).

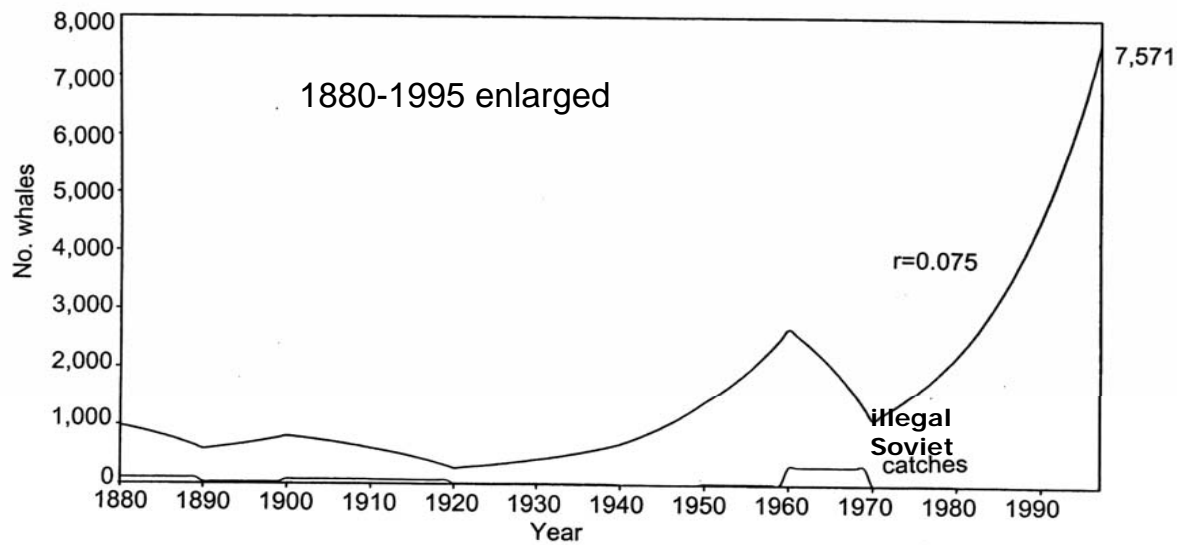


Fig. 7. Total population size and catches for 1880-1997 (all Southern Hemisphere combined).

## S. Hemisphere population trend, 1770-1995

# Individual ID, WA-SA

## Two-part data base

- Sightings:  
by date, locality, class,  
photo number/s, animals  
identified (mainly from  
1980, *ca* 1900 'sheets' to  
2004

*linked to*

- Individual Animals:  
by id number, sex,  
head/body characters,  
head photo, photo quality  
(532 ids so far, but major  
backlog of *ca* 2000 head  
pics, to 2005, being  
processed)

# Acknowledgements

- Pilots (esp. John Bell, Jenny Schmidt)
- Observer/photographers (Ray Smith, Alan Murdoch, Andrew Halsall)
- WA Museum
- DEH/Natural Heritage Trust, and predecessors