

# Australian Fossil Mammal Sites

## Further information

Department of the Environment,  
Water, Heritage and the Arts

[www.environment.gov.au/heritage/places/world/fossil](http://www.environment.gov.au/heritage/places/world/fossil)

## UNESCO World Heritage

<http://whc.unesco.org/en/list/698>

## Contacts

### Australian Fossil Mammal Sites (Riversleigh)

#### Queensland Environmental Protection Agency

Reef and National Parks Information Centre  
PO BOX 5391  
Townsville QLD 4810

[www.epa.qld.gov.au/parks\\_and\\_forests/world\\_heritage\\_areas/riversleigh](http://www.epa.qld.gov.au/parks_and_forests/world_heritage_areas/riversleigh)

Email: [tsv.infocentre@epa.qld.gov.au](mailto:tsv.infocentre@epa.qld.gov.au)  
Tel: 07 4722 5224

#### Outback at Isa

Riversleigh Fossils Interpretive Centre  
19 Marian Street  
Mount Isa QLD 4825

Web: [www.outbackatisa.com.au](http://www.outbackatisa.com.au)

Email: [info@outbackatisa.com.au](mailto:info@outbackatisa.com.au)

Tel: 1300 659 660

### Australian Fossil Mammal Sites (Naracoorte)

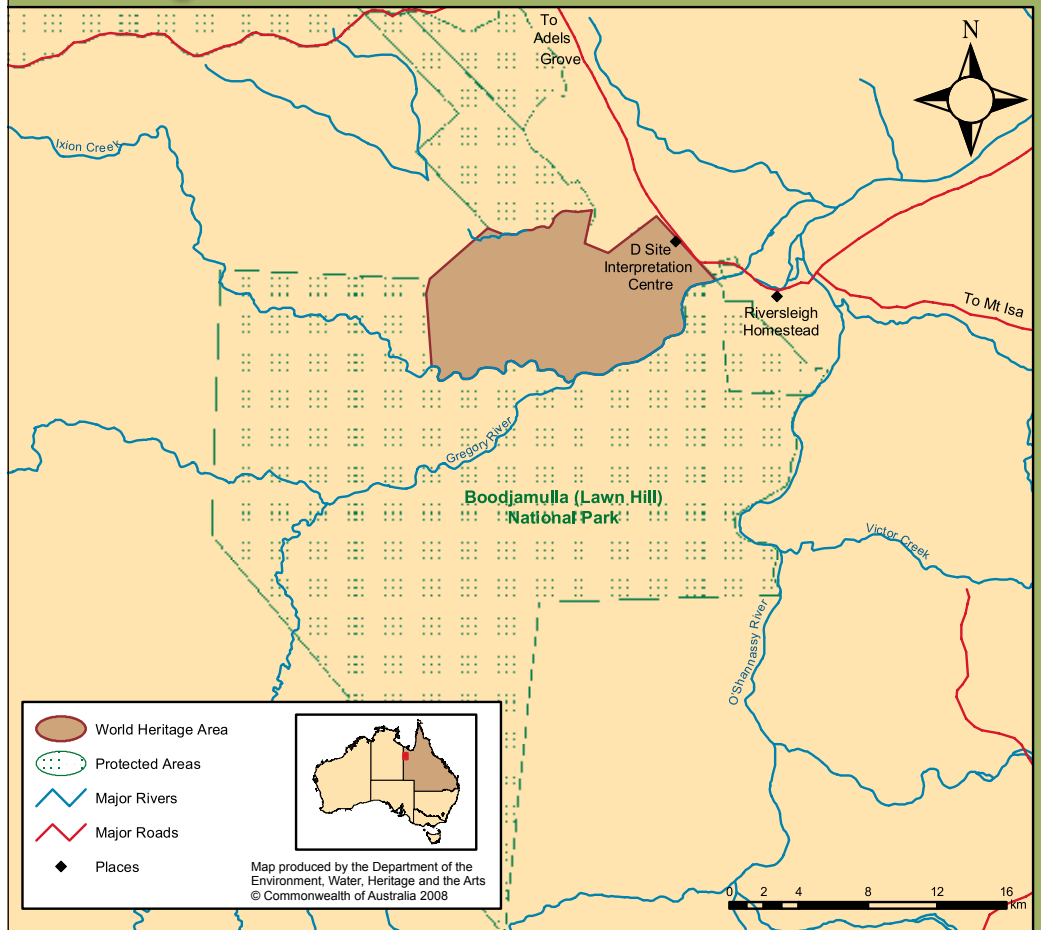
#### SA Department for Environment and Heritage

Naracoorte Caves National Park  
PO Box 134  
Naracoorte SA 5271

[www.environment.sa.gov.au/parks/naracoorte](http://www.environment.sa.gov.au/parks/naracoorte)

Email: [naracoortecaves@saugov.sa.gov.au](mailto:naracoortecaves@saugov.sa.gov.au)  
Tel: 08 8762 2340

## Riversleigh



## Naracoorte

