

**Australian Government Department of the
Environment and Heritage**

Heritage Strategy

*A strategy for managing places owned or controlled by the
Department to protect and conserve their Commonwealth
Heritage values.*

December 2005

Australian Government Department of the Environment and Heritage – Heritage Strategy

Introduction	3 -
Agency objectives for management of heritage places and corporate planning framework	4 -
Relevant key positions within agency	5 -
Consultation and liaison with other government agencies on heritage matters	5 -
Community consultation on heritage matters	7 -
Conflict resolution process	8 -
Process for identification and assessment of Commonwealth Heritage Values	9 -
Process for establishment of heritage management plans for Commonwealth Heritage Places	13 -
Consideration of heritage values in agency planning	14 -
Budget and plan	16 -
Training and promotion	16 -
Monitoring, review and report	18 -
Attachment A Places owned or controlled by DEH	20 -
Attachment B - Australian Government Environment and Heritage Portfolio Conservation and Management of Commonwealth Heritage	33
Attachment C - Timeline of key steps in meeting DEH Heritage requirements	34
Attachment D - Compliance of the Heritage Strategy with the requirements of the EPBC Act 1999	35
Attachment E - Model conservation planning process	45
Attachment F - List of relevant heritage management agencies	46
Attachment G - DEH Corporate Plan	48

1. Introduction

The Department of the Environment and Heritage (DEH) owns or controls a number of places with heritage values that have been recognised through inclusion on the Commonwealth Heritage List (identified in Attachment A). The department owns or controls places in Australia, the Australian Antarctic Territory and the Territory of Heard Island and McDonald Islands. The department is also responsible for other places that may have Commonwealth Heritage values not currently recognised or listed (and this will be the subject of an identification and assessment process outlined in Section 7). The department recognises the importance of managing Commonwealth Heritage places through the identification, protection, conservation, presentation and transmission of their Commonwealth Heritage values to all generations. This Heritage Strategy is for the Department of the Environment and Heritage and includes the Australian Antarctic Division. The following agencies:

- Great Barrier Reef Marine Park Authority;
- Sydney Harbour Federation Trust;
- Director of National Parks; and
- Bureau of Meteorology

are within the Environment and Heritage Portfolio and separate heritage strategies have been prepared for the areas these agencies own or control. Each of these agency strategies have been developed with the intent of achieving best practice heritage management. The overall Portfolio approach to heritage management is outlined in the statement at Attachment B.

This Heritage Strategy has been prepared in order to identify how the department will manage the steps it has and will take to protect and conserve the Commonwealth Heritage values under its ownership or control and how it will report on this process. The list of places owned or controlled by the department is at Attachment A. A timeline of key steps in meeting our heritage requirements is provided at Attachment C.

Arrangements are already in place for the management of some places with known and listed Commonwealth Heritage values. This strategy outlines how these arrangements will be enhanced in order to comply with the *Environment Protection and Biodiversity Conservation Act 1999* (EPBC Act), and how other places not currently identified and listed will be assessed for Commonwealth Heritage values.

2. Agency objectives for management of heritage places and corporate planning framework *(EPBC Regulations Schedule 7C 1(a) (b))*

The DEH Heritage Strategy has been developed in accordance with the requirements of the EPBC Act to address matters prescribed by the Environment Protection and Biodiversity Conservation Regulations 2000 (EPBC Regulations) and is consistent with the Commonwealth Heritage management principles specified in Schedule 7B of the Regulations.

DEH commits to its heritage management responsibilities by stating within its Corporate Plan (Attachment G, page 5) that:

We take responsibility for the heritage properties in our control. The department is actively identifying and caring for Commonwealth heritage property in its control through the development and implementation of a departmental Heritage Strategy and best practice management plans for Commonwealth Heritage places.

As the department responsible for the administration of the heritage provisions of the EPBC Act, DEH recognises that it has a particular responsibility to set a leading example in protecting and conserving heritage values, including Commonwealth Heritage values and incorporating heritage obligations within the department's overall corporate planning framework.

In addition to the recognition of heritage obligations in the department's Corporate Plan, this Heritage Strategy will form part of the suite of departmental planning documents including the corporate and strategic plans and ISO14001 environmental management systems, and will be published on the department's internet and intranet for ease of reference. Consideration will be given to the need to revise environment management systems (which as overarching environment management documents should also encompass heritage issues) to incorporate reference to heritage obligations.

Obligations to identify and assess places owned or controlled by the department for Commonwealth Heritage values will be incorporated in divisional plans of divisions responsible for the management of those places – primarily the Australian Antarctic Division (AAD) and the Corporate Strategies Division. The commitment made in the department's Corporate Plan (above) is further reflected in the Australian Antarctic Division's *Strategic Directions*, and its Environmental Policy.

Further information on budgeting for maintenance and conservation of heritage values is outlined in Section 10 of this strategy.

3. Relevant key positions within agency

(EPBC Regulations Schedule 7C 1(c))

The following are key positions within DEH which have responsibility for aspects of the department's commitment to identify and care for Commonwealth Heritage places:

- First Assistant Secretary, Policy Coordination Division. Responsible for the preparation and review of the Heritage Strategy in consultation with relevant areas of the department, and for the preparation of the annual report and publication of the DEH Heritage Register.
- First Assistant Secretary, Corporate Strategies Division (CSD). Responsible for the implementation of the Heritage Strategy for places managed by CSD, including the identification and assessment of Commonwealth Heritage values, the development of relevant components of the DEH Heritage Register, the preparation of management plans for listed Commonwealth Heritage places owned or controlled by DEH that are the responsibility of CSD.
- Director, Australian Antarctic Division (AAD). Responsible for the management of the Australian Antarctic Territory (AAT) and the Territory of Heard Island and McDonald Islands. Responsible for the implementation of the Heritage Strategy for places managed by AAD, including the identification and assessment of Commonwealth Heritage values, the development of relevant components of the DEH Heritage Register, and the preparation of management plans for listed Commonwealth Heritage places owned or controlled by DEH that are the responsibility of AAD.
- The Supervising Scientist, Supervising Scientist Division (SSD). Responsible for the implementation of the Heritage Strategy for places managed by SSD, including the identification and assessment of Commonwealth Heritage values, the development of relevant components of the DEH Heritage Register, and the preparation of management plans for listed Commonwealth Heritage places owned or controlled by DEH that are the responsibility of SSD.

DEH will ensure that relevant officers are made aware of, understand and carry out their role in meeting the department's Commonwealth heritage obligations under the EPBC Act (*See Training and Promotion, Section 11*).

4. Consultation and liaison with other government agencies on heritage matters

(EPBC Regulations Schedule 7C 1(d))

DEH recognises that there is a range of Commonwealth, State and Territory agencies responsible for the management of legislation that provides for protection of natural and

cultural (historic and Indigenous) heritage. Key government agencies and heritage legislation relevant to the department are listed at Attachment F. This list will be maintained and made available as part of the Heritage Strategy on the departmental intranet and internet.

DEH commits to consult and liaise with these other agencies on heritage matters in relation to places owned or controlled by DEH where management of these places is relevant to the area of responsibility of another government agency. Where relevant, this requirement will be included in management plans for Commonwealth Heritage places owned or controlled by the department.

In relation to obligations under the EPBC Act, DEH commits to consult with the Minister for the Environment and Heritage and the Australian Heritage Council (AHC) as required by the EPBC Act and Regulations. In particular DEH will:

- Ask the Minister for advice before making, amending, or revoking and replacing a management plan for a Commonwealth Heritage place. (S341S(6))
- Ask the Minister to endorse the management plan for a Commonwealth Heritage place. (S341T)
- Take all reasonable steps to assist the Minister and the AHC in the identification, assessment and monitoring of the Commonwealth Heritage values of a place owned or controlled by DEH. (S341Z)
- Consult with the AHC and take into account any advice received from the Council in relation to the preparation of the department's Heritage Strategy. (S341ZA(1A))
- Seek the advice of the Minister before taking any actions that has, may have or are likely to have a significant impact on a Commonwealth Heritage place. This will be specified in all management plans. (S341ZD)
- Where the department intends to execute a contract for sale or lease to someone else of a Commonwealth area in the Australian jurisdiction that is or includes all or part of a Commonwealth Heritage place, the department will give at least 40 days notice to the Minister and consider the advice of the Minister in relation to ensuring the ongoing protection of the Commonwealth Heritage values of that place and take all reasonable steps to ensure the measures are taken. (S341ZE)
- If a Commonwealth Heritage place is in a State or self-governing Territory, invite comments on draft management plans for the place from the responsible heritage authority (if any) of the State or Territory. (Reg 10.03C(c))
- In managing a Commonwealth Heritage place, the department will consult with and seek to integrate where appropriate, any Commonwealth, State, Territory and local government responsibilities for those places (Regs Schedule 7B(3)). The department will also endeavour to consult with neighbouring land managers in order to achieve cooperative approaches to land management as it relates to the management of heritage values.

Prior to consulting with the Minister or AHC, the department may also informally seek advice from the Heritage Division of DEH on these matters.

The AAD will consult as appropriate with other Antarctic Treaty Parties on matters relating to heritage and historic sites and monuments in Antarctica.

DEH leases part of the John Gorton Building and all the Communications Centre from the Department of Finance and Administration (DoFA). The John Gorton Building and the Communications Centre are individually included in the Commonwealth Heritage List as part of the Parliament House Vista. Where DEH proposes an action that may have an impact on the heritage values of these places it will consult and liaise with DoFA.

5. Community consultation on heritage matters. *(EPBC Regulations Schedule 7C 1(e))*

DEH will consult and liaise with the community on heritage matters. The department will consult people and organisations with interests in the property's values, use and management plans. The benefits of consultation include not just additional knowledge or experience of a property but also assistance in resolving conflict prior to commitment to a management regime.

In particular the department will consult with the relevant community in regard to:

- The identification of Commonwealth Heritage values of places owned or controlled by the department. Consultation will include:
 - Identification of key community members or organisations with knowledge of or association with a place that may have Commonwealth Heritage values and provide for and encourage their contribution to the identification and assessment of Commonwealth Heritage values.
- The development and implementation of management plans for listed Commonwealth Heritage places. Consultation will include:
 - Identification of key community members or organisations with knowledge of, or association with, a listed place and provide for and encourage their involvement in the preparation of management plans.
 - Notices inviting comments on draft, amended or replacement management plans will be placed in accordance with S10.03C of the EPBC Act Regulations and notices provided in accordance with sub-regulation 16.05A(5).
 - Consultation in relation to the implementation of the management plan, including monitoring and review (details to be set out in the management plan in accordance with Schedule 7A(b)(iii)&(iv) of the EPBC Act Regulations).

The Commonwealth Heritage management principles (Schedule 7B (6)) state that 'Indigenous people are the primary source of information on the value of their heritage

and that the active participation of Indigenous people in identification, assessment and management is integral to the effective protection of Indigenous heritage values'. In cases where Indigenous heritage matters are to be taken into consideration, particular attention will be given to consultation with relevant Indigenous communities. Consultation with Indigenous people will be carried out in accordance with the steps for effective consultation detailed in the publication *Ask First: A guide to respecting Indigenous heritage places and values*.

For historic and natural places the design and conduct of consultation processes will take into account relevant standards set out in the Australia *ICOMOS Burra Charter*, 1999, and the *Australian Natural Heritage Charter* 2002.

Some areas of the department responsible for the management of places already have community consultation mechanisms in place, which will be used (taking into account the commitments outlined above) where consultation on heritage matters is required:

- The Australian Antarctic Division has community consultation procedures established under procedures of the Antarctic Treaty System in relation to environmental assessment procedures, these will be reviewed to incorporate any additional requirements for this Heritage Strategy.
- The Supervising Scientist Division has regular contact with the key groups (traditional owners, Jabiru Town Council and Parks Australia) that would need to be consulted on places owned or controlled by the department in Jabiru. These contacts will be reviewed to incorporate any additional requirements for this Heritage Strategy in order to form the basis for any consultation process in relation to the Jabiru Field Station.

6. Conflict resolution process (EPBC Regulations Schedule 7C 1(f))

DEH recognises that in assessing and managing the Commonwealth Heritage values of places, it is possible for situations to arise where there is disagreement over the assessment of heritage values; or where the management of a place for one or more of its heritage values conflicts with management for another reason (including another heritage value). Strategies that DEH could use, where appropriate, to avoid, minimise or resolve conflict include:

- Ensure appropriate consultation occurs to allow relevant views and expertise to be taken into account (see S5 above) in assessment and management decisions relevant to the heritage values of Commonwealth Heritage places.
- Where conflict arises in relation to the identification and assessment of possible heritage values, discussions should be held with interested parties to reach a common understanding of the values. Where this is not able to be achieved,

- alternative views should be noted in the DEH Heritage Register, for consideration by the AHC and the Minister for the Environment and Heritage during the nomination and listing process for the Commonwealth Heritage List under the EPBC Act. The process may include where appropriate the use of heritage experts (including advice from the DEH Heritage Division).
- Where conflict arises in relation to the management of a place on the Commonwealth Heritage List or National Heritage List, discussions should be held between the place manager and those parties who have expressed concerns. This may include the use of heritage experts (including advice from the DEH Heritage Division) and/or mediators.

In cases where conflict resolution involves Indigenous heritage matters, resolution procedures will be carried out in accordance with the process outlined in the publication *Ask First: A guide to respecting Indigenous heritage places and values*.

Section 9 outlines steps that will be taken to ensure heritage values are taken into account in planning decisions where DEH proposes an action that may have an impact on the heritage values of a Commonwealth Heritage place under its ownership or control.

Conflict resolution may also take place within the context of a referral, assessment and approval process under the EPBC Act where the department is proposing to take an action that may have a significant impact upon matters protected and the proposal has been referred for consideration by the Minister for the Environment and Heritage under S68 of the EPBC Act. In this case the final decision will rest with the Minister for the Environment and Heritage.

7. Process for identification and assessment of Commonwealth Heritage Values

(EPBC Regulations Schedule 7C 2(a) (b), 3(a) (c))

DEH owns and/or controls a variety of places distributed across a number of government jurisdictions. Places owned or controlled by DEH, along with information on current use and existing heritage status are listed at Attachment A. The department commits to the identification and assessment of all Commonwealth Heritage values for each of these places. In accordance with sub regulation 10.03G(1) of the EPBC Regulations, Commonwealth Heritage values may be identified by:

- (a) considering all natural and cultural heritage values (including equipment, furniture, fittings, and articles associated or connected with a building or structure's significance), recognising Indigenous people as the primary source of information on the significance of their heritage and their participation as necessary to identify and assess Indigenous heritage values;
- (b) identifying values against the Commonwealth Heritage criteria;

- (c) using expert heritage advice to ensure that levels of documentary and field research are appropriate to best practice assessment and management of heritage values;
- (d) using a comparative and thematic approach; and,
- (e) consulting widely, as appropriate, with government agencies, stakeholders and the community.

Where the department later becomes responsible for other places, not currently included in this document, it will identify and assess Commonwealth Heritage values for that place within one year.

As noted in Attachment A, DEH is an occupant in a number of premises where the lease is only for part of the building and control of the place only includes standard office fit-out. It is the view of the department that it does not own or control such premises for the purpose of identifying and managing their heritage values. DEH does however commit to working with those parties responsible for the ownership and control of these premises to assist in ensuring the appropriate management of any heritage values (see Section 4). DEH will consider the application of the EPBC Act in relation to any proposed actions that may impact upon heritage values of such premises (see also Section 9).

In general terms the process that DEH will follow involves applying best practice standards relevant to the particular heritage values. For example when considering natural values, the process of identification and assessment will follow the steps set out in the *Australian Natural Heritage Charter*, namely:

- obtain and study evidence about the place;
- identify and contact people or groups who know about, care for, or have an interest in the place and seek information about the place;
- assess the physical condition and management realities; and
- determine the natural significance of the place.

For Indigenous values, the process that DEH will follow is set out in *Ask First*. For historic values the process to follow is set out in the *Burra Charter* and involves:

- a description of the place;
- an investigation of records, fabric, use, setting, contents, objects and associations;
- an analysis of the evidence and collected information;
- the identification and listing of the values assessed against heritage criteria; and,
- obtaining agreement from Indigenous people on the handling of sensitive or culturally restricted information and informed consent to display any information gathered, including publishing on the internet.

For investigations into cultural heritage objects and collections where these objects, collections or elements contribute to the significance of the place, the identification and assessment will take into consideration the process set out in (*significance*) *A Guide to Assessing the Significance of Cultural Heritage Objects and Collections* and the *Burra Charter* Articles 10 and 11.

The development of the department's heritage register (the 'DEH Heritage Register') will include the information required in sub regulation 10.03G(2).

Due to administrative arrangements and variations in existing levels of understanding and documentation of heritage values, this will be carried out in two parallel streams: (a) places administered by the Australian Antarctic Division; and (b) places administered by the Corporate Strategies Division and the Supervising Scientist Division.

(a) Australian Antarctic Division (AAD) Places.

The AAD is responsible for the administration and management of the external territories of the Australian Antarctic Territory and the Territory of Heard Island and McDonald Islands. Heard Island and McDonald Islands is a declared property on the World Heritage List and forms part of the Heard Island and McDonald Islands Commonwealth Marine Reserve. In addition to the administration of the Australian Antarctic Territory, the Australian Antarctic Division exercises wider responsibility for the whole of Antarctica under the Antarctic Treaty System. The Australian Antarctic Division leases property in Tasmania, and owns and occupies facilities on Macquarie Island (Tasmania).

As part of its ongoing management responsibilities, the AAD has an Antarctic Heritage Register of places, sites, monuments and structures with assessed or potential historic values that it owns or controls. Some of these sites are already listed as Commonwealth Heritage Places, while others are entered in the Register of the National Estate (RNE). In some cases the protection of identified heritage values has also been addressed in management plans. The following steps will be taken to identify and assess historic and Indigenous Commonwealth Heritage values:

- All places owned or controlled by the AAD will be assessed against the Commonwealth Heritage criteria in order to identify and assess Commonwealth historic and Indigenous heritage values. This is likely to largely be a desk-top study based on a review of the existing AAD heritage database, however where existing data is incomplete, field surveys and community consultation will be carried out, including as necessary, by or under the guidance of heritage experts.
- The identification and assessment of historic and Indigenous heritage values will be completed by 31 December 2006.
- The existing AAD Heritage Register will be revised and updated to include information on historic and Indigenous heritage values including Commonwealth Heritage values and this information will be incorporated in the DEH Heritage Register by March 2007.

The significant natural heritage values of the Australian Antarctic Territory are recognised under the Antarctic Treaty System, including the *Protocol on Environmental Protection to the Antarctic Treaty 1991 (Madrid Protocol)*, which designates Antarctica as a 'natural reserve, devoted to peace and science'. A protected area system was established for Antarctica under the 1964 Agreed Measures for the Conservation of Fauna and Flora. This was further elaborated through the Madrid Protocol and has been

implemented through the *Antarctic Treaty (Environment Protection) Act 1980*.

Antarctica has been designated as a Special Conservation Area to protect the Antarctic environment and dependent and associated ecosystems.

The Territory of Heard Island and McDonald Islands are part of the Heard Island and McDonald Islands Commonwealth Marine Reserve. Heard Island and McDonald Islands are listed as World Heritage sites and are included on the RNE. The following steps will be taken to identify and assess Commonwealth natural heritage values:

- Existing data (including data assembled in relation to the above arrangements) will be reviewed in order to identify and assess the natural Commonwealth Heritage values of the Australian Antarctic Territory and the Heard and McDonald Islands external territory. This is likely to largely be a desk-top study, however where existing data is incomplete, field surveys, remote sensing and community consultation will be carried out, including as necessary, by or under the guidance of heritage experts.
- The identification and assessment of natural Commonwealth Heritage values will be completed by 31 December 2006.
- The existing AAD Heritage Register will be updated and expanded to include information on natural heritage values including Commonwealth Heritage values and this information will be incorporated in the DEH Heritage Register by March 2007.

(b) Places managed by the DEH Corporate Strategies Division and Supervising Scientist Division.

The Corporate Strategies Division and Supervising Scientist Division are responsible for the management of the remaining places owned or controlled by the department (listed in Attachment A). These places are mainly buildings with uses including office accommodation, storage and research. Departmental accommodation in a number of other buildings only occupies part of a building and is not considered to be 'control' for the purpose of the EPBC Act heritage requirements.

In contrast to the AAD managed places, there has to date been no coordinated approach to recording heritage values of these places. The following steps will be taken in identifying and assessing Commonwealth Heritage values:

- Any existing data on heritage values will be collected and assessed. Where existing data is incomplete (likely), field surveys and community consultation will be carried out, including as necessary, by or under the guidance of heritage experts.
- The identification and assessment of Commonwealth Heritage values will be completed by 31 December 2006.

- The outcomes of the identification and assessment process of heritage values including Commonwealth Heritage values will be included in the DEH Heritage Register which will be established by March 2007.

DEH Heritage Register

Within two months of the identification and assessment of all heritage values including Commonwealth Heritage values and completion of the DEH Heritage Register, a report will be provided to the Minister for the Environment and Heritage outlining the identification and assessment process and providing a copy of the DEH Heritage Register of places with Commonwealth Heritage values. The report will address the requirements of sub regulation 10.03G(3).

The DEH Heritage Register will be updated as further information about heritage values becomes available, or works are completed or there are changes to a place and will be reviewed every five years. The DEH Heritage Register will be made available on the DEH website (apart from material requiring confidentiality). The First Assistant Secretary, Policy Coordination Division will be responsible for ongoing management of the DEH Heritage Register.

8. Process for establishment of heritage management plans for Commonwealth Heritage Places *(EPBC Regulations Schedule 7C 3(b))*

The AAD is responsible for the management of three places currently entered in the Commonwealth Heritage List (Attachment A). These places are currently subject to management plans that will be revised to incorporate Commonwealth Heritage requirements. It is also possible that as a result of the identification and assessment process, further places owned or controlled by the department will be entered in the Commonwealth Heritage List.

In accordance with S341U(1) of the EPBC Act, management plans will not be made for Commonwealth Heritage places in a Commonwealth Reserve. This is relevant to the Heard Island and McDonald Islands Marine Reserve, which is covered by a plan under the EPBC Act.

Steps for establishing a management plan

- Where there is already a management plan for a listed place/places, the existing plan will be reviewed and revised to incorporate the requirements of the EPBC Act to protect and manage the Commonwealth Heritage values of the place or places.
- Where a management plan does not already exist for a listed place, it shall be managed in accordance with the Commonwealth Heritage management principles

- and a plan will be prepared (a plan may be in the same document as one or more other plans for managing Commonwealth Heritage places).
- Management plans will not be inconsistent with the Commonwealth Heritage management principles, and will address the matters prescribed in Schedule 7A of the EPBC Regulations.
 - In developing or revising a management plan, advice will be sought from the Minister for the Environment and Heritage. Any advice from the Minister will be taken into account in making or revising the plan.
 - In developing or revising a management plan, comments will be sought (in accordance with sub regulation 10.03C) and considered from members of the public, Indigenous people with rights and interests in the place and any relevant State or self-governing territory about the matters to be addressed by the proposed plan or revision.
 - The department will seek the endorsement of each management plan by the Minister for the Environment and Heritage.
 - Management plans for existing listed Commonwealth Heritage places will be finalised within three years of the DEH Heritage Strategy being completed.
 - Where places have identified Commonwealth Heritage values and are listed as a result of the identification and assessment process outlined in this Strategy, or become owned or controlled by the department at a later date, the maximum expected time for completion of a heritage management plan from the point of listing or acquisition is three years.

An outline of the process for preparing a management plan is shown in the flow chart at Attachment E.

9. Consideration of heritage values in agency planning *(EPBC Regulations Schedule 7C 3(e))*

As outlined in section 2 above, DEH commits to its heritage management responsibilities and states within its Corporate Plan that:

We take responsibility for the heritage properties in our control. The department is actively identifying and caring for Commonwealth heritage property in its control through the development and implementation of a departmental Heritage Strategy and best practice management plans for Commonwealth Heritage places.

This commitment is further reflected in the Australian Antarctic Division's *Strategic Directions* document, which lists protection of the Antarctic environment as a priority area. The AAD Environmental Policy also states the AAD's commitment to "conserve and protect our significant Antarctic heritage".

This Heritage Strategy will form part of the suite of departmental planning documents. Obligations to identify and assess places owned or controlled by the department for

Commonwealth Heritage values will also be incorporated in divisional plans of divisions responsible for the management of those places.

This will allow consideration of Commonwealth Heritage values at an early stage in planning for future development, works, divestment etc.

Where planning decisions are to be made that relate to Commonwealth Heritage values the following steps may be applicable:

- Where a management plan has been developed for a place entered in the Commonwealth Heritage List, within the context of the requirements of the EPBC Act, the plan will serve as the key source of guidance on how Commonwealth Heritage values will be taken into account in planning and divestment decisions. Where a proposed planning and divestment action extends beyond the scope of the existing plan the management plan may need to be revised.
- Where a management plan has yet to be completed for a Commonwealth Heritage place, in accordance with section 341V of the EPBC Act, the department will take all reasonable steps to ensure that its acts (if any) relating to the place are not inconsistent with the Commonwealth Heritage management principles.
- If the department considers executing a contract for the sale or lease to someone else of a Commonwealth area in the Australian jurisdiction that is or includes all or part of a Commonwealth Heritage place, the department will comply with the provisions of S341ZE of the EPBC Act in relation to consulting with the Minister for Environment and Heritage and ensuring that unless otherwise agreed with the Minister, the contract includes a covenant to protect the Commonwealth Heritage values of the place.
- Where DEH proposes an action that may have an impact on the heritage values of a Commonwealth Heritage place under its ownership or control, the Division proposing the action will advise the Heritage Division and seek comment before taking the action. Consideration will also be given to seeking the advice of the Australian Heritage Council. The Division proposing the action will take the Heritage Division and/or Council advice into account.
- In all cases, in accordance with S341ZC, DEH will ensure that it does not take any action that has, will have or is likely to have an adverse impact upon the National Heritage values of a National Heritage place or the Commonwealth Heritage values of a Commonwealth Heritage place, unless:
 - (a) There is no feasible and prudent alternative to taking the action; and
 - (b) All measures that can reasonably be taken to mitigate the impact of the action on those values are taken.
- Before the department takes an action that has, will have or is likely to have a significant impact on a Commonwealth Heritage place, the department will ask the Minister for the Environment and Heritage for advice in accordance with S341ZD of the EPBC Act.
- The department remains aware that, in accordance with S 28 of the EPBC Act, the department must not take an action that has, will have or is likely to have a significant impact on the environment (including the heritage values of a place)

inside or outside the Australian jurisdiction. In cases where the department is proposing to take an action that may have a significant impact, the proposal will be referred for consideration by the Minister for the Environment and Heritage under S68 of the EPBC Act as to whether or not the action is a controlled action.

10. Budget and plan for maintenance and long term conservation of heritage values *(EPBC Regulations Schedule 7C 3(f))*

As noted in Sections 2 and 8 above, currently the only Commonwealth Heritage listed places owned or controlled by DEH are managed by the AAD. The identification and assessment of heritage sites is AAD core business (with one full time person working on heritage issues) and continuing work will take EPBC Act requirements into account. Maintenance and long term conservation costs are managed within the Australian Antarctic Division's resource management framework. The arrangements will be enhanced during the revision of current management plans to incorporate EPBC Act requirements to manage for Commonwealth Heritage values (Section 8).

Resources will be allocated by DEH to (where appropriate) obtain expert advice on the existence of any heritage values as part of the identification and assessment process outlined in Section 7.

If in the future further places that the department owns or controls are entered in the Commonwealth Heritage List, costs for the maintenance, priority works and long term conservation of heritage values will initially be considered and identified in the development of (or revision of) a management plan to manage Commonwealth Heritage values.

Once an understanding is developed of the places in the Commonwealth Heritage List that the department controls, divisions will be responsible for establishing a budget for the management of the listed Commonwealth Heritage places, with outcomes reported in the annual report. Records of maintenance of DEH heritage places will be included in the DEH Heritage Register

11. Training and promotion *(EPBC Regulations Schedule 7C 4(a) (b))*

(a) Staff Training and Awareness

As identified in the department's Corporate Plan, DEH is committed to a culture of continuous improvement. DEH plan and communicate business objectives and provide development opportunities so staff have the necessary skills to do their work.

In its *Strategic Directions* document, the AAD further commits to allowing its staff to achieve their potential and to contribute fully to the AAD's work.

Within this context DEH will ensure that:

- Departmental personnel with responsibilities for heritage matters will receive training from persons with suitable expertise within three months of the Heritage Strategy being finalised, or within three months of taking up a relevant position. Appropriate training will be provided by persons with suitable expertise for staff that work on or access listed places.
- Staff responsible for the management of Commonwealth Heritage places will be made aware of and will be required to become familiar with management plans (when in place) that incorporate EPBC Act requirements to manage for Commonwealth Heritage values.
- The DEH Heritage Strategy and Heritage Register of Commonwealth Heritage places will be made available on the departmental intranet and internet.
- The commencement of the DEH Heritage Strategy will be announced on the departmental intranet, and the departmental newsletter.

(b) Promoting Community Awareness of Commonwealth Heritage Values

Community awareness of existing Commonwealth Heritage values of places owned or controlled by the AAD will be promoted through the incorporation of information about Commonwealth Heritage values into the AAD's existing public information services programme. Heritage information is already included on the AAD's web pages, and will be reviewed as part of a planned major revision of the AAD website. Heritage information is also included on the dedicated website for the Territory of Heard Island and McDonald Islands (<http://www.heardisland.aq/>).

The AAD is preparing an interactive website with a virtual tour for the interpretation of National and Commonwealth Heritage listed Mawson's Huts (via a Gift to the Nation grant). The values of heritage properties and their management will also continue to be promoted in the Australian Antarctic Magazine.

The DEH Heritage Strategy and Heritage Register of Commonwealth Heritage values will be made available on the departmental web pages. The listing of new Commonwealth Heritage places owned or controlled by the department will be highlighted on the department's web pages.

Where further places owned or controlled by the department are entered in the Commonwealth Heritage List, the need to promote community awareness of the heritage values will be taken into account in the development (or revision) of the management plan for that place. This will include the engagement of relevant Indigenous people and

follow appropriate clearance procedures for disclosing and/or promoting Indigenous heritage values.

Promotion could include interpretation measures such as signage, publications and organised events to raise community awareness of the heritage places owned or controlled by DEH. Management Plans for DEH Commonwealth Heritage places will include interpretation strategies.

12. Monitoring, review and report

(EPBC Regulations Schedule 7C 1(g), 3(g))

Monitoring, reviewing and reporting on DEH's progress in (1) implementing the Heritage Strategy and in (2) conserving Commonwealth Heritage values will be framed around the requirements of the EPBC Act:

- Review of the DEH Heritage Strategy every three years after it is made (S341ZA(5)).
- Review of a plan for managing a Commonwealth Heritage place at least every five years (S341X).
- Monitoring and reporting arrangements for specific listed places will be detailed in management plans (EPBC Act Regulations Schedule 7A(h)(ix-x)) including monitoring and reporting of the condition of heritage values and records of intervention and maintenance of the heritage place.
- Information derived from the success of individual management plans can then be compiled to present an overall picture of departmental performance in terms of condition and maintenance of heritage values and in the production of future management plans.

Reporting of the review of the Heritage Strategy after each three year period will address the matters prescribed in regulation 10.03F, including:

- An outline of consultation undertaken with relevant stakeholders in the review process.
- A summary of the department's achievements against its objectives for management of heritage places.
- Reporting on the extent to which the identification and assessment of Commonwealth Heritage values of all DEH property has been achieved.
- The values included in the DEH and AAD Heritage Registers.
- Progress in developing or revising management plans for listed places.
- An outline of physical and management changes that have occurred to the department's Commonwealth Heritage places since the last strategy was prepared, and of any expected changes.

A written report of each review of the Strategy will be provided to the Minister for the Environment and Heritage.

In addition to complying with section 516A, information on the monitoring, review and reporting of the management and conservation of heritage places will also be included in the department's annual report. Information from the DEH Heritage Register will inform the annual report. Relevant information will also be made available for use in other environment and heritage reporting frameworks, such as the State of the Environment Report, as appropriate.

Monitoring review and reporting arrangements for each listed place will be detailed in the management plan for each place.

Attachment A

Places owned or controlled by the Department of the Environment and Heritage (October 2005)

NAME OF PLACE	LOCATION	HERITAGE LISTING	MANAGEMENT STATUS	CURRENT USE	PLANNED DEVELOPMENT
Darwin International Airport (leased office building)	Cnr Pederson Road and Fenton Court, Darwin International Airport, Marrara, NT	No known heritage values	No heritage management related plan in place. Managed by Corporate Strategies Division (CSD).	Office and laboratories	
Jabiru Field Station	opposite the airport in Jabiru East, Kakadu National Park, Northern Territory.	Not listed.	No heritage management related plan in place. Managed CSD.	Operational and potentially operational offices, meeting rooms and laboratories with associated support facilities. Operational laboratories are equipped and used for the Ranger biological and chemical monitoring programmes	<i>Atomic Energy Act and Aboriginal Land Rights Act</i> requires that these facilities are decommissioned and rehabilitated as part of the rehabilitation of the Ranger Mine Project Area (expected to be in some time after 2020).
Jabiru Housing	43 houses and units in Jabiru, Kakadu National Park, Northern Territory.	No known heritage values	No heritage management related plan in place. Managed by Supervising Scientist Division (SSD).	Some housing is used for Jabiru based DEH staff, some kept as transient accommodation. Remaining Housing managed by the Jabiru Town Council on behalf of DEH.	The sale of two houses is currently under negotiation.

NAME OF PLACE	LOCATION	HERITAGE LISTING	MANAGEMENT STATUS	CURRENT USE	PLANNED DEVELOPMENT
Jabiru Vacant Land	7 blocks of vacant land in Jabiru, Kakadu National Park, Northern Territory.	No known heritage values	No heritage management related plan in place. Managed SSD.	vacant	
Fyshwick Warehouse. Leased premises	9 Collie Street, Fyshwick, ACT	No known heritage values	No heritage management related plan in place. Managed CSD.	Storage	
Macquarie Lighthouse and associated buildings	Sydney Harbour's southern headland	Macquarie Lighthouse and Macquarie Lighthouse Group are both listed on the Register of the National Estate and the Commonwealth Heritage List. The head lighthouse keeper's quarters and semi-detached assistant keeper's quarters of the 1880s lightstation remain on 2.2 hectares on Sydney Harbour's southern headland	The Sydney Harbour Federation Trust (SHFT) currently manages the site on the department's behalf. Planning for the site will be addressed within the context of the SHFT's Comprehensive Plan for the future of its lands on Sydney Harbour. Once the property has been transferred to the Trust, it will be subject to the SHFT's Heritage Strategy.	The lighthouse is still used for its initially intended purpose - as a guiding light showing the way to the entrance of Sydney Harbour. The light is operated by the Australian Maritime Safety Authority. The lightstation cottages are all privately leased and there is no public access.	This property is currently held by the department as an interim measure. It is intended that ownership be transferred to the SHFT.
Tasmania (places managed by the Australian Antarctic Division)					
Australian Antarctic Division Headquarters	203 Channel Highway, Kingston Tasmania, 7050	Register of the National Estate (Indicative)			

NAME OF PLACE	LOCATION	HERITAGE LISTING	MANAGEMENT STATUS	CURRENT USE	PLANNED DEVELOPMENT
Australian Antarctic Territory (places managed by the Australian Antarctic Division)					
Australian Antarctic Territory (AAT) (Contains numerous sites and objects individually identifiable as “places” under the EPBC Act, as listed below)	East Antarctica: all the islands and territories south of Lat 60 S between 160E and 45E, except for Adelie Land (Terre Adelie, claimed by France: 136°11' E to 142°02' E)	Register of the National Estate (Indicative) National Heritage List (Nominated Place)	The Antarctic Treaty and its Protocol on Environmental Protection, which recognises heritage values through formal designation as Historic Sites or Monuments. Implemented in Australian law through the <i>Antarctic Treaty (Environment Protection) Act</i> (1980), administered by the AAD.	Proclaimed “a natural reserve devoted to peace and science”. Research focussed, allows other activities not in conflict with prime purpose.	Antarctic Treaty Parties may conduct research and establish research bases in the AAT.
Law Base	Larsemann Hills, Princess Elizabeth Land	Not assessed.	Antarctic Specially Managed Area management plan (in draft, completion expected June 06)	Field research base.	Memorandum of Understanding signed with Romania for their use of the base. To be relocated in 2005/06.
Taylor Rookery, ASPA 101	Mac. Robertson Land	Not assessed.	Antarctic Specially Protected Area Management Plan, current	Fauna protection	None

NAME OF PLACE	LOCATION	HERITAGE LISTING	MANAGEMENT STATUS	CURRENT USE	PLANNED DEVELOPMENT
Rookery Islands, Holme Bay, ASPA 102	Mac. Robertson Land	Not assessed.	Antarctic Specially Protected Area Management Plan, current	Fauna protection	None
Ardery Island and Odber Island, ASPA 103	Budd Coast, Wilkes Land	Not assessed.	Antarctic Specially Protected Area Management Plan, current	Fauna protection	None
Haswell Island, ASPA 127	Princess Elizabeth Land	Not assessed.	Antarctic Specially Protected Area Management Plan, current	Fauna protection	None (proponent Russia)
North-eastern Bailey Peninsula, ASPA 135	Budd Coast, Wilkes Land	Not assessed.	Antarctic Specially Protected Area Management Plan, current	Flora protection	None
Clark Peninsula, ASPA 136	Budd Coast, Wilkes Land	Not assessed.	Antarctic Specially Protected Area Management Plan, current	Fauna and flora protection	None
Marine Plain, ASPA 143	Mule Peninsula, Vestfold Hills, Princess Elizabeth Land	Not assessed.	Antarctic Specially Protected Area Management Plan, current	Geomorphological and fossil protection	None
Frazier Islands, ASPA 160	Budd Coast, Wilkes Land, East Antarctica	Not assessed.	Antarctic Specially Protected Area Management Plan, current	Fauna protection	None
Casey Station	Buildings and infrastructure in Wilkes Land, AAT, East Antarctica (Casey)	Not assessed	No heritage management plan.	Scientific research facility	None

NAME OF PLACE	LOCATION	HERITAGE LISTING	MANAGEMENT STATUS	CURRENT USE	PLANNED DEVELOPMENT
Jacks Donga refuge	Wilkes Land, via Casey	Not assessed	No heritage management plan	Refuge	None
Wilkes Hilton refuge	Wilkes Land, via Casey	Not assessed	No heritage management plan	Refuge	None
Robinson's Ridge refuge	Wilkes Land, via Casey	Not assessed	No heritage management plan	Refuge	None
Neptune wreck	Wilkes Land, via Casey	Not assessed	No heritage management plan	Wrecked aircraft	None
Browning Peninsula refuge	Wilkes Land, via Casey	Not assessed	No heritage management plan	Refuge	None
S2	Wilkes Land, via Casey	Not assessed	No heritage management plan	None: buried abandoned research site	None
Law Dome Summit Site	Wilkes Land, via Casey	Not assessed	No heritage management plan	None: buried abandoned research site	None
Two graves	Wilkes Land, via Casey	Not assessed	No heritage management plan	Graves	None
Mawson Station (includes buildings and infrastructure within the station environs and hinterland, as listed below.)	Buildings and infrastructure in Mac.Robertson Land, AAT, East Antarctica (Mawson)	Register of the National Estate (Registered) Commonwealth Heritage List (Listed place)	Cultural heritage assessment Mawson Station Heritage Assessment prepared 1995. Mawson Station Supplementary Heritage Study prepared 1996.	Scientific research facility	None
Transmitter Building	Mawson	Register of the National Estate (Registered) Commonwealth Heritage List (Listed place)	Cultural heritage assessment Mawson Station Heritage Assessment prepared 1995. Mawson Station Supplementary Heritage Study prepared 1996.	Communications	None

NAME OF PLACE	LOCATION	HERITAGE LISTING	MANAGEMENT STATUS	CURRENT USE	PLANNED DEVELOPMENT
Electricians' Workshop	Mawson	Register of the National Estate (Registered) Commonwealth Heritage List (Listed place)	Cultural heritage assessment Mawson Station Heritage Assessment prepared 1995.	Workshop	None
Old living quarters, "Biscoe"	Mawson	Register of the National Estate (Registered) Commonwealth Heritage List (Listed place)	Cultural heritage assessment Mawson Station Heritage Assessment prepared 1995.	Store	Repair following fire damage
Old carpenter's workshop, "Weddell"	Mawson	Register of the National Estate (Registered) Commonwealth Heritage List (Listed place)	Cultural heritage assessment Mawson Station Heritage Assessment prepared 1995.	Store	None
Magnetic Absolute Hut	Mawson	Register of the National Estate (Registered) Commonwealth Heritage List (Listed place)	Cultural heritage assessment Mawson Station Heritage Assessment prepared 1995.	Science	None
Cemetery (3 graves)	Mawson	Register of the National Estate (Registered) Commonwealth Heritage List (Listed place)	Cultural heritage assessment Mawson Station Supplementary Heritage Study prepared 1996.	Grave	None
Electrical Store	Mawson	Register of the National Estate (Registered) Commonwealth Heritage List (Listed place)	Cultural heritage assessment Mawson Station Heritage Assessment prepared 1995.	Store	None

NAME OF PLACE	LOCATION	HERITAGE LISTING	MANAGEMENT STATUS	CURRENT USE	PLANNED DEVELOPMENT
Hangar	Mawson	Register of the National Estate (Registered) Commonwealth Heritage List (Listed place)	Cultural heritage assessment Mawson Station Heritage Assessment prepared 1995.	Hangar	None
Old sleeping quarters, "Wilkins"	Mawson	Register of the National Estate (Registered) Commonwealth Heritage List (Listed place)	Cultural heritage assessment Mawson Station Heritage Assessment prepared 1995.	Vacant	None
Old sleeping quarters, "Shackleton"	Mawson	Register of the National Estate (Registered) Commonwealth Heritage List (Listed place)	Cultural heritage assessment Mawson Station Heritage Assessment prepared 1995.	Vacant	None
Old sleeping quarters, "Dovers"	Mawson	Register of the National Estate (Registered) Commonwealth Heritage List (Listed place)	Cultural heritage assessment Mawson Station Heritage Assessment prepared 1995.	Vacant	None
Cosmic Ray Laboratory	Mawson	Register of the National Estate (Registered) Commonwealth Heritage List (Listed place)	Cultural heritage assessment Mawson Station Heritage Assessment prepared 1995.	Research	None
Old science laboratories, "Wombat"	Mawson	Register of the National Estate (Registered) Commonwealth Heritage List (Listed place)	Cultural heritage assessment Mawson Station Heritage Assessment prepared 1995.	Vacant	None

NAME OF PLACE	LOCATION	HERITAGE LISTING	MANAGEMENT STATUS	CURRENT USE	PLANNED DEVELOPMENT
Transmitter Building	Mawson	Register of the National Estate (Registered) Commonwealth Heritage List (Listed place)	Cultural heritage assessment Mawson Station Heritage Assessment prepared 1995.	Communications.	None
Dog Platform and tackle Hut	Mawson	Register of the National Estate (Registered) Commonwealth Heritage List (Listed place)	Cultural heritage assessment Mawson Station Supplementary Heritage Study prepared 1996.	Not used	None
Old Auroral Observatory	Mawson	Register of the National Estate (Registered) Commonwealth Heritage List (Listed place)	Cultural heritage assessment Mawson Station Heritage Assessment prepared 1995.	In use(Hydroponics)	None
Doglines	Mawson	Register of the National Estate (Registered) Commonwealth Heritage List (Listed place)	Cultural heritage assessment Mawson Station Heritage Assessment prepared 1995.	Not used	None
Proclamation Island, Enderby Islands, Rock cairn and plaque	Mac.Robertson Land, AAT, East Antarctica	HSM	No heritage management related plan in place	Memorial	None
Cape Bruce, Rock cairn and plaque, Mac. Robertson Land	Mac.Robertson Land, AAT, East Antarctica	HSM	No heritage management related plan in place	Memorial	None
Davis station (includes buildings and infrastructure within the station environs and hinterland, as listed below)	Buildings and infrastructure in Princess Elizabeth Land, AAT, East Antarctica (Davis)	Commonwealth Heritage List (Indicative Place) Register of the National Estate (Registered)	Davis Station Heritage Study 1996	Scientific research facility	None

NAME OF PLACE	LOCATION	HERITAGE LISTING	MANAGEMENT STATUS	CURRENT USE	PLANNED DEVELOPMENT
Paint Store	Davis	Commonwealth Heritage List (Indicative Place) Register of the National Estate (Registered)	Davis Station Heritage Study 1996	Music room	None
Emergency Powerhouse	Davis	Commonwealth Heritage List (Indicative Place) Register of the National Estate (Registered)	Davis Station Heritage Study 1996	Electricity generation	None
Old Meteorological Balloon Hut	Davis	Commonwealth Heritage List (Indicative Place) Register of the National Estate (Registered)	Davis Station Heritage Study 1996	Vacant	None
No. 3 Store	Davis	Commonwealth Heritage List (Indicative Place) Register of the National Estate (Registered)	Davis Station Heritage Study 1996	Store	None
Remote Transmitter Hut	Davis	Commonwealth Heritage List (Indicative Place) Register of the National Estate (Registered)	Davis Station Heritage Study 1996	Communication	None
Electrical Store	Davis	Commonwealth Heritage List (Indicative Place) Register of the National Estate (Registered)	Davis Station Heritage Study 1996	Store	None

NAME OF PLACE	LOCATION	HERITAGE LISTING	MANAGEMENT STATUS	CURRENT USE	PLANNED DEVELOPMENT
Scientific Store	Davis	Commonwealth Heritage List (Indicative Place) Register of the National Estate (Registered)	Davis Station Heritage Study 1996	Store	None
Biology Laboratory (Field Store)	Davis	Commonwealth Heritage List (Indicative Place) Register of the National Estate (Registered)	Davis Station Heritage Study 1996	Store	None
Emergency Radio Transmitter	Davis	Commonwealth Heritage List (Indicative Place) Register of the National Estate (Registered)	Davis Station Heritage Study 1996	Communications	None
Magnetic Absolute Building	Davis	Commonwealth Heritage List (Indicative Place) Register of the National Estate (Registered)	Davis Station Heritage Study 1996	Research	None
Platcha Refuge	Vestfold Hills, Princess Elizabeth Land, AAT, East Antarctica, via Davis	Commonwealth Heritage List (Indicative Place) Register of the National Estate (Registered)	Davis Station Heritage Study 1996	Field hut	None

NAME OF PLACE	LOCATION	HERITAGE LISTING	MANAGEMENT STATUS	CURRENT USE	PLANNED DEVELOPMENT
Mikkelsen Cairn	Vestfold Hills, Princess Elizabeth Land, AAT, East Antarctica, via Davis	Commonwealth Heritage List (Indicative Place) Register of the National Estate (Registered) Antarctic Treaty System (Historic Site & Monument No 72)	Davis Station Heritage Study 1996	Memorial	none
Wilkin's Cairn Walkabout Rocks	Vestfold Hills, Princess Elizabeth Land, AAT, East Antarctica, via Davis	Commonwealth Heritage List (Indicative Place) Register of the National Estate (Registered) Antarctic Treat System (Historic Site & Monument No 6)	Davis Station Heritage Study 1996	Memorial	None
Law Cairn	Vestfold Hills, Princess Elizabeth Land, AAT, East Antarctica, via Davis	Commonwealth Heritage List (Indicative Place) Register of the National Estate (Registered)	Davis Station Heritage Study 1996	Memorial	None
Brookes refuge	Vestfold Hills, Princess Elizabeth Land, AAT, East Antarctica, via Davis	Commonwealth Heritage List (Indicative Place) Register of the National Estate (Registered)	Davis Station Heritage Study 1996	Field Hut.	None
Watts Refuge	Vestfold Hills, Princess Elizabeth Land, AAT, East Antarctica, via Davis	Commonwealth Heritage List (Indicative Place) Register of the National Estate (Registered)	Davis Station Heritage Study 1996	Field Hut.	None

NAME OF PLACE	LOCATION	HERITAGE LISTING	MANAGEMENT STATUS	CURRENT USE	PLANNED DEVELOPMENT
Mawson's Huts	Cape Denison, Commonwealth Bay, George V Land	National Heritage List (Listed Place); Commonwealth Heritage List (Listed Place); Register of the National Estate (Registered) Antarctic Specially Protected Area No. 162, Antarctic Specially Managed Area No.3, Antarctic Treaty System Historic Site & Monument No77	Antarctic Specially Protected Area and Historic Site Management Plan; Antarctic Specially Managed Area management plan; Mawson's Huts Conservation Management Plan 2002.	Heritage site, memorial	See "management status".
Territory of Heard Island and McDonald Island (HIMI) (managed by the Australian Antarctic Division)	Southern Indian Ocean.	World Heritage List (Declared property) National Heritage List (Indicative place) Commonwealth Heritage List (Indicative place) Register of the National Estate (Registered) Commonwealth Marine Reserve	Heard Island and McDonald Islands Marine Reserve Management Plan, 2005.	Nature reserve and scientific research.	None.

Note: The Department of the Environment and Heritage currently leases part of the following buildings:

- John Gorton Building, King Edward Terrace, Parkes, ACT (Commonwealth Heritage List)
- Edmund Barton Building, Barton, ACT
- 80 Elizabeth Street, Hobart.

In each case the leases are only for part of the building and control of the place only includes standard office fit-out. In the case of the John Gorton Building and Communications basement, the lease is with another Commonwealth agency and specifically excludes the Heritage aspects of the building. It is the view of the department that it does not own or control these premises for the purpose of managing their heritage values. However, the department will consult and liaise with the Commonwealth owner in accordance with its obligations set out in Section 4 above.

Australian Government Environment and Heritage Portfolio Conservation and Management of Commonwealth Heritage

The Environment and Heritage Portfolio is responsible for a significant number of places with heritage values that have been recognised through their inclusion on the Commonwealth Heritage list. The portfolio is also responsible for other places that may have Commonwealth Heritage values not currently formally recognised or listed. The management of each of these places is the responsibility of the Department of the Environment and Heritage or one of a number of agencies within the portfolio including:

- Great Barrier Reef Marine Park Authority
- Sydney Harbour Federation Trust
- Director of National Parks
- Bureau of Meteorology

The Heritage Strategies of each agency in the Environment and Heritage Portfolio are covered by this statement.

Each agency recognises the importance of managing Commonwealth Heritage places through the identification, protection, conservation, presentation and transmission of their Commonwealth Heritage values to all generations.

Each agency will develop and implement a Heritage Strategy in accordance with the requirements of the *Environment Protection and Biodiversity Conservation Act 1999* (EPBC Act) and will be consistent with the Commonwealth Heritage management principles specified in Schedule 7B of the regulations. Each of these agency strategies have been developed with the intent of achieving best practice heritage management.

In particular each agency will (within the timeframes set out in their Heritage Strategy) commit to:

- the identification and assessment of Commonwealth Heritage values of places owned or controlled by each agency and the inclusion of this information in a heritage register; and,
- ensuring that a management plan to protect and manage Commonwealth Heritage values is in place for each owned or controlled place listed as Commonwealth Heritage.

Agency Heritage Strategies and management plans will be reviewed and revised in accordance with the requirements of the EPBC Act.

Timeline of key steps in meeting DEH Heritage requirements

Timeframe	Deliverable
By January 2006	Provide copy of this Heritage Strategy to the Minister for the Environment and Heritage
By 31 December 2006	Complete identification and assessment of Commonwealth Heritage values of places owned or controlled by DEH
By March 2007	Establishment of DEH Heritage Register
By June 2007	DEH Heritage Register submitted in a report to Minister for the Environment and Heritage.
January 2009	Completion of management plans for existing listed Commonwealth Heritage places.
Every three years	Review of DEH Heritage Strategy
At least every five years after a management plan is made	Review of heritage management plans

Attachment D

Compliance of the Heritage Strategy of the Department of the Environment and Heritage with the requirements of the Environment Protection and Biodiversity Conservation Act 1999 and Regulations

Environment Protection and Biodiversity Conservation Act 1999

Section 341ZA Heritage Strategies	
Legislation	Comment
(1) If a Commonwealth agency owns or controls one or more places, the agency must:	
(a) prepare a written heritage strategy for managing the places to protect and conserve their Commonwealth Heritage values; and	Satisfied by this heritage strategy.
(b) give a copy of the strategy to the Minister; as soon as practicable and in any event within 2 years after the later of:	Satisfied by this heritage strategy.
(c) the time the agency first owns or controls a place; and	Satisfied by this heritage strategy.
(d) the commencement of this section.	
Note: the heritage strategy will apply to every place the agency owns to controls.	
(1A) Before making a heritage strategy, the Commonwealth agency must consult the Australian Heritage Council and take into account any advice the agency receives from the Council.	Satisfied by this heritage strategy.

(2) The Commonwealth agency may, in writing, amend the heritage strategy or revoke and replace the heritage strategy. The Commonwealth agency must give the Minister a copy of the amended or replacement strategy within 20 business days of the amendment or replacement.	Satisfied by this heritage strategy and Section 12.
(3) A heritage strategy must:	
(a) mention the period within which the Commonwealth agency must make a plan under section 341S; and	See Section 8.
(b) mention the period within which the Commonwealth agency must do the things mentioned in subsection 341ZB(1); and	See Section 7.
(c) address the matters prescribed by the regulations (if any); and	
(d) not be inconsistent with the Commonwealth Heritage management principles.	Satisfied by this heritage strategy.
(4) The Minister must advise the Commonwealth agency whether or not the agency's heritage strategy (whether original, amended or replacement) is inconsistent with the Commonwealth Heritage management principles.	
(5) At least once in every 3 year period after a heritage strategy is made, the Commonwealth agency concerned must cause a review of the strategy to be carried out.	See Section 12.
(6) The agency must give the Minister a written report of the review. The report must address the matters prescribed by the regulations (if any).	See Section 12.

Regulation 10.03F Report about review of heritage strategy (Act s.341ZA)	
Legislation	Comment
For subsection 341ZA (6) of the Act, a report about the review of a Commonwealth agency heritage strategy must include the following:	
(a) an outline of consultation undertaken with relevant stakeholders in the review process;	NA.
(b) a summary of the agency's achievements against its objectives for management of its heritage places;	NA.
(c) an evaluation of the success of each of the matters included in a Commonwealth agency heritage strategy in achieving the identification, protection, conservation and presentation of Commonwealth Heritage values;	NA.
(d) an update on the extent to which the identification and assessment of Commonwealth Heritage values of all agency property has been achieved, and the values included in an agency's heritage places register;	NA.
(e) an update on the progress and timeliness of the preparation of management plans for Commonwealth Heritage places;	NA.
(f) an outline of any physical and management changes that have occurred to the agency's Commonwealth Heritage places since the last strategy was prepared, and of any expected changes;	NA.
(g) an update on progress with Commonwealth	NA.

Regulation 10.03F Report about review of heritage strategy (Act s.341ZA)	
Legislation	Comment
Heritage training programs;	
(h) a specification of the time-frame for updating the Heritage Strategy following the review;	NA.
(i) an update on other heritage issues relevant to the agency's management of Commonwealth Heritage places in accordance with the Commonwealth Heritage Management Principles.	NA.

<i>Environment Protection and Biodiversity Conservation Amendment Regulations 2003 (No. 1)</i>	
Schedule 7C Heritage Strategies	
Legislation	Comment
1. A strategy must include general matters, including the following:	
(a) a statement of the agency's objective for management of its heritage places;	See Section 2.
(b) a description of how the heritage strategy operates within the agency's corporate planning framework;	See Section 2 and 9.
(c) a list of key positions within the agency, the holders of which are responsible for heritage matters;	See Section 3.
(d) an outline of a process for consultation and liaison with other government agencies on heritage matters;	See Section 4.
(e) an outline of a process for consultation and liaison with the community on heritage matters, including, in particular, a process for consultation and liaison with indigenous	See Section 5 and Section 6.

Environment Protection and Biodiversity Conservation Amendment Regulations 2003 (No. 1)	
Schedule 7C Heritage Strategies	
Legislation	Comment
stakeholders on indigenous heritage matters;	
(f) an outline of a process for resolution of conflict arising from the assessment and management of Commonwealth Heritage values;	See Section 6.
(g) an outline of processes for monitoring, reviewing and reporting on the implementation of an agency's heritage strategy.	See Section 12.
2. A strategy must include matters relating to the identification and assessment of Commonwealth Heritage values, including the following:	
(a) an outline of the process for identifying and assessing the Commonwealth Heritage values of all agency property;	See Section 7.
(b) a statement of the time-frames for the completion of:	See Section 7.
(i) the agency's heritage identification and assessment program; and	See Section 7.
(ii) the agency's register of places and their Commonwealth Heritage values; and	See Section 7.
(iii) the agency's report to the Minister, that includes details of the program and a copy of the register.	See Section 7.

3. A strategy must include matters relating to the management of Commonwealth Heritage values, including the following:	
(a) a description of how the agency's heritage places register will be maintained, updated and made accessible to the public;	See Section 7.
(b) a statement of the time frame for the preparation of management plans for the agency's Commonwealth Heritage places;	See Section 8.
(c) an outline of the existing use, by the agency, of places with Commonwealth Heritage values;	See Attachment A.
(d) an outline of current or expected development, works, disposal or other proposals that may affect Commonwealth Heritage values;	See Attachment A.
(e) an outline of the process to ensure that Commonwealth Heritage values are considered in the agency's planning for future development, works, divestment or other proposals;	See Section 9 and Attachment A.
(f) a plan and budget for the maintenance and long-term conservation of Commonwealth Heritage values;	See Section 10.
(g) an outline of the process by which the success of the agency in conserving Commonwealth Heritage values will be monitored and reviewed.	See Section 12.
4. A strategy must include matters relating to Commonwealth Heritage training and promotion, including the following:	
(a) a program for the training of agency staff	See Section 11.

about Commonwealth heritage obligations and best practice heritage management;	
(b) a program for promoting community awareness of Commonwealth Heritage values, as appropriate.	See Section 11.

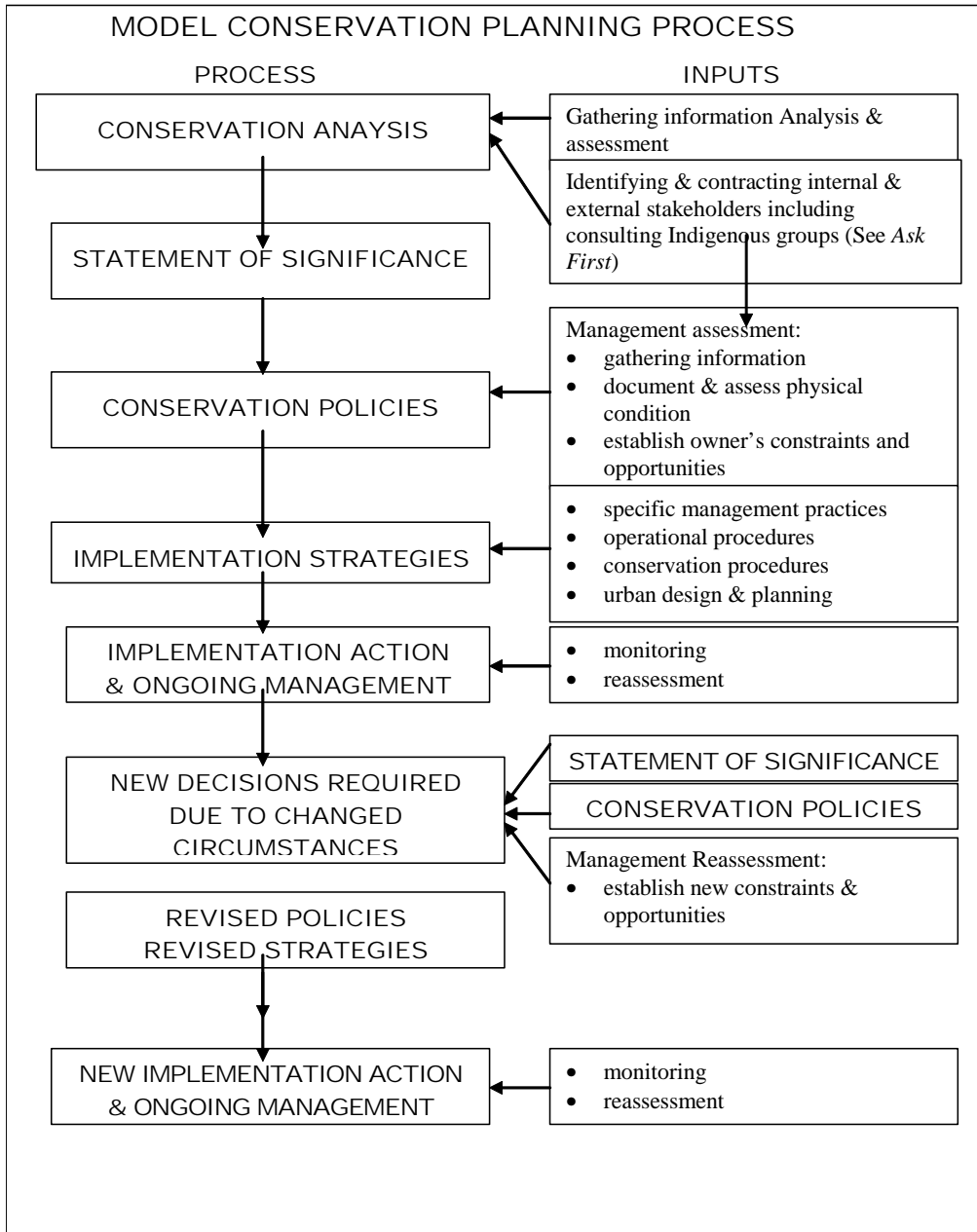
Section 341ZB Heritage assessments and registers	
Legislation	Comment
(1) A Commonwealth agency must do all of the following within the period mentioned in its heritage strategy:	
(a) conduct a program to identify Commonwealth Heritage values for each place it owns or controls;	See Section 7.
(b) produce a register that sets out, for each place it owns or controls, the Commonwealth Heritage values (if any) of that place;	See Section 7.
(c) give the Minister a written report that includes:	Satisfied by this heritage strategy.
(i) details of the program; and	
(ii) a copy of the register.	
(2) The regulations may prescribe all or any of the following:	
(a) how Commonwealth heritage values may be identified of a place;	
(b) matters a register must address;	
(c) matters a report to the Minister must address.	
(3) A Commonwealth agency must keep its register up to date.	

Section 341ZB Heritage assessments and registers	
Legislation	Comment
(4) A register may be kept electronically.	
(5) If a report under paragraph (1)(c) indicates that a place owned or controlled by a Commonwealth agency may have one or more Commonwealth Heritage values, information from the report may be used or referred to in a nomination of the place for inclusion in the Commonwealth Heritage List.	

Regulation 10.03G Heritage assessments and registers (Act 341ZB)	
Legislation	Comment
(1) For paragraph 341ZB (2) (a) of the Act, Commonwealth heritage values for a place may be identified by:	
(a) considering all natural and cultural heritage values, recognizing indigenous people as the primary source of information on the significance of their heritage and their participation as necessary to identify and assess indigenous heritage values; and	See Section 7.
(b) identifying values against the Commonwealth heritage criteria; and	See Section 7.
(c) using expert heritage advice to ensure that levels of documentary and field research are appropriate to best practice assessment and management of heritage values; and	See Section 7.
(d) using a comparative and thematic approach; and	See Section 7.
(e) consulting widely, as appropriate, with government agencies, stakeholders and the	See Section 4 and Section 5.

Regulation 10.03G Heritage assessments and registers (Act 341ZB)	
Legislation	Comment
community.	
(2) For paragraph 341ZB (2) (b) of the Act, matters a register must include are the following:	
(a) a comprehensive description, and a clear plan showing the name and location, of each place that has Commonwealth Heritage values;	See Section 7.
(b) a discrete heritage place identification number for each place;	See Section 7.
(c) details of ownership, leases, licences, rental or other tenure arrangements, as applicable;	See Section 7 and Attachment A.
(d) a summary description of the significant physical characteristics and elements of the place;	See Section 7.
(e) a sequential summary of the use of the place;	See Section 7 and Attachment A.
(f) a statement of significance for the place, identifying its heritage values and specifying any that are Commonwealth Heritage values;	See Section 7 and Section 8.
(g) a record of any other heritage listings, providing relevant register numbers;	See Section 7.
(h) a record of the date and nature of any works, maintenance or other activity at the place that is relevant to conservation of its heritage values;	See Section 7 and Section 10.
(i) a specification of any property or information access restrictions or requirements;	See Section 7.
(j) an outline of any consultation requirements relating to the place;	See Section 4, Section 5 and Section 7.
(k) a list of relevant conservation documents or	See Section 7.

Regulation 10.03G Heritage assessments and registers (Act 341ZB)	
Legislation	Comment
references;	
(l) a record of when information has been updated;	See Section 7.
(m) cross references to:	
(i) agency place records of any objects that are significant by association with the place, indicating their current location; and	See Section 7.
(ii) archived records of particular importance to the heritage values of the place.	See Section 7.
(3) For paragraph 341ZB (2) (c) of the Act, a report to the Minister must include the following:	
(a) an outline of the identification program;	See Section 7 and Attachment A.
(b) details of any surveys conducted, or expert advice obtained by, the agency to identify the Commonwealth Heritage values;	See Section 7 and Section 8.
(c) a summary of the work undertaken with respect to each of the matters included in these Regulations for the identification and assessment of Commonwealth Heritage values.	See Section 7.



List of Relevant Heritage Management Agencies

Commonwealth

Australian Heritage Council

Assesses the values of places nominated for the National Heritage List and the Commonwealth Heritage List. Advises the Minister for the Environment and Heritage on conserving and protecting listed values. The Council may also nominate places with heritage values to these lists. Replaced the Australian Heritage Commission.
Tel 02 6274 2111

Heritage Division, Department of the Environment and Heritage

The Heritage Division in the Department of the Environment and Heritage administers a number of Acts which protect aspects of Australia's heritage including the *Aboriginal and Torres Strait Islander Heritage Protection Act 1984*, the *Protection of Movable Cultural Heritage Act 1986*, the *Historic Shipwrecks Act 1976* and provides advice in relation to heritage aspects of the *Environment Protection and Biodiversity Conservation Act 1999*.
Tel 02 6274 2111

Australian Capital Territory

Heritage Section, Environment ACT

The Heritage Section of Environment ACT provides heritage conservation advice, administers the heritage provisions of the *Land (Planning and Environment) Act 1991* which relate to the management of natural, Aboriginal and historic heritage and provides administrative and operational support to the ACT Heritage Council which advises the responsible Minister on all heritage matters in the ACT and prepares the Interim Heritage Places Register, maintains ACT Heritage Places and Heritage Objects Register.
Tel 02 6207 9777

Northern Territory

Aboriginal Areas Protection Authority

Administers the *Northern Territory Aboriginal Sacred Sites Act 1989*, with the aim to protect and prevent desecration of sacred sites in the Northern Territory.
Tel 08 8981 4700

Heritage Conservation Branch, Department of Lands, Planning and Environment

Assists the Heritage Advisory Council, which advises the Minister for Lands, Planning and Environment on a range of heritage functions including: preparation of criteria for

the assessment of places and objects of heritage value; carries out research into, and evaluates the heritage value of places and objects; recommends to the Minister places and objects of heritage value for inclusion in the register; recommends to the Minister the removal of places and objects from the register, and advises the Minister on the conservation and use of heritage places and objects.

Tel 08 8924 4411

Tasmania

Heritage Office, Department of Tourism, Parks, Heritage and the Arts

The Tasmanian Government's lead agency responsible for sustainable management and promotion of the State's unique natural, Aboriginal, historic and cultural heritage assets. Works with the Tasmanian Heritage Council, a statutory body responsible for the administration of the *Historic Cultural Heritage Act 1995* and the establishment of the Tasmania Heritage Register.

Tel 03 6233 2037

Department of the Environment and Heritage

Corporate Plan 2005-08