

# Working on Country funded Indigenous ranger groups

## New South Wales

- 1 Githabul Rangers - Kyogle
- 2 Mid North Coast Aboriginal Rangers - Taree
- 3 Nimbin Rock Rangers
- 4 Wattleidge & Tarnia Kumukun - Guyra (IPA)
- 5 Willandra Lakes World Heritage Area Rangers - Buronga

## Queensland

- 6 Bunya Mountains Murri Rangers - Dalby
- 7 Chuulangun Rangers- Wenlock and Pascoe Rivers - Cape York (IPA)
- 8 Djunbung Land and Sea Rangers - East Trinity
- 9 Erubam Rangers - Erub (Darriey) Island
- 10 Gangalida Garawa Rangers - Burketown/Doomadgee
- 11 Gidarji Rangers
- 12 Gimungun Rangers - Cardwell
- 13 Kalan Rangers - Coen - Cape York
- 14 Kawadji - Karaji Rangers - Lockhart River
- 15 Kowanyama Rangers - Cape York
- 16 Lama Lama Rangers - Port Stewart - Cape York
- 17 Lamalgal Rangers - lama or Yam Island
- 18 Mabuygiw Rangers - Mabuig Island - IPA (Pulu)
- 19 Malu Kiai Rangers - Boigu
- 20 Mapoon Land and Sea Rangers - Mapoon - Cape York
- 21 Meriam Gesep A Ger Keparem Le Rangers - Mer (Murray) Island
- 22 Mualgau Rangers - Moa Island
- 23 Mura Badhulgau Rangers - Badu
- 24 Napranum Ranger Program - Napranum
- 25 Apudthama Northern Peninsula Area Regional Council Rangers - Injinoo
- 26 Nyungkal Rangers - Sipton Flat
- 27 Queensland Murray - Darling Basin Community Rangers - Toowoomba
- 28 Saibai Island
- 29 Wellesley Sea Rangers - Gununa - Wellesley islands
- 30 Yuku-Baja-Muliku Rangers - Archer Point

## Northern Territory

- 31 Anangu Rangers - Angas Downs (IPA)
- 32 Anindiyakwa Rangers - Groote Eylandt (IPA)
- 33 Anmatjerr Rangers - Ti Tree
- 34 Arafura Swamp Groups: Gurruwiling - Murwung; SE Arafura Rangers - Mirmatja & Wangi Djakamir Rangers - Ramingining
- 35 Bulgul Land and Sea Rangers - Bulgul
- 36 Dhimurru Rangers - Nhulunbuy (IPA)
- 37 Delk Rangers - Maningrida (IPA)
- 38 Garawa and Waanyi/Garawa Rangers - Robinson River and Garawa Aboriginal Land Trusts
- 39 Gangi Rangers - Minjilang
- 40 Gumurr Marthakal Rangers - Galwinku
- 41 Ingerreke Natural Resource Management (Iwupataka Land Trust) - Alice Springs
- 42 Jawoyn Rangers - Katherine
- 43 Kaltukatjara Rangers - Docker River (Kaltukatjara)
- 44 I-Anthawirriyarra Sea Ranger Unit - Borroloola
- 45 Malak Malak Land Management - Daly River
- 46 Mardbalk Marine Rangers - Waruwi
- 47 Muru-Wirinyi Ankkul Rangers - Tennant Creek
- 48 Mimal Rangers - Bulman Weemol
- 49 Numbulwar Numburindi Amalagayag Inyung Rangers - Numbulwar
- 50 Papunya Rangers - Papunya
- 51 Thamarurr Rangers - Wadeye (Port Keats) (IPA)
- 52 Tiwi Islands Land and Sea Management - Mikkapiti
- 53 Tjuwanpa Rangers - Hermannsburg
- 54 Wagiman Guwardagun Rangers - Pine Creek
- 55 Marwurr Rangers, Warddeken IPA - Kulkulamanyo
- 56 Warlpiri Rangers - Yuendumu
- 57 Wulain Rangers - Lajamanu (Hooker Creek) (IPA)
- 58 Yirrkala Rangers - Yirrkala (IPA)
- 59 Yugul Mangi Rangers - Ngukurr

## Western Australia

- 60 Bardi Jawi Rangers - Ardyaloon/One Arm Point
- 61 Karajarri Rangers - Bidiyadanga
- 62 Maru Ranger program - Newman
- 63 Miriwoong Gajerrong Rangers - Kununurra
- 64 Ngaanyatjarra - Warburton (IPA)
- 65 Ngurrara Rangers - Djugerari (IPA)
- 66 Nykina Mangala - Jarimadangah
- 67 Nyul Nyul Land Rangers - Beagle Bay
- 68 Panuku Rangers - Mulan/Billiluna (IPA)
- 69 Unguu Rangers - Kalumburu (IPA)
- 70 Wungurr Rangers - Derby

## South Australia

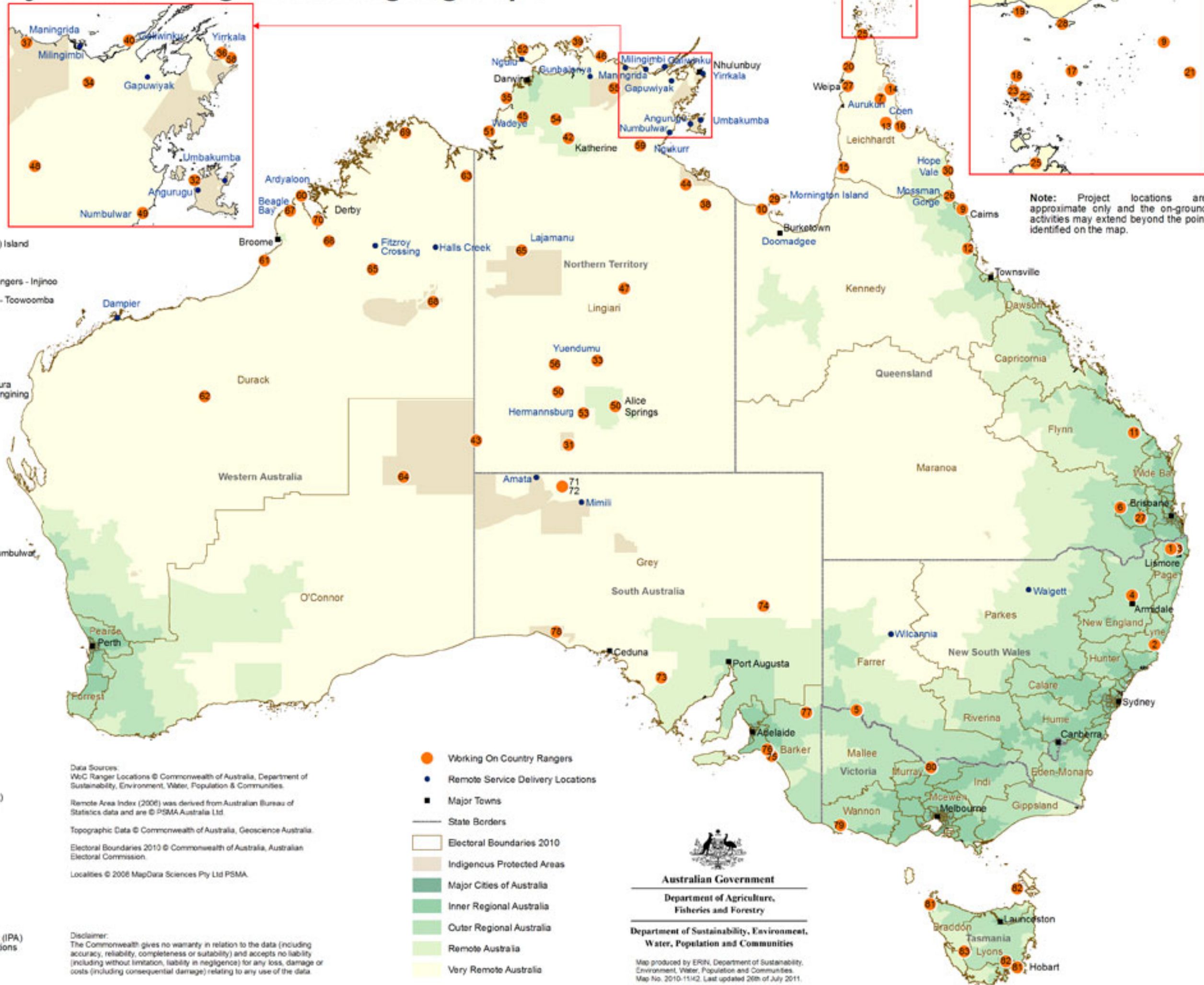
- 71 Anangu Pitjantjatjara Yankunytjatjara (APY) - Umuwa (IPA)
- 72 Caring for Waru in the APY Lands - Umuwa
- 73 Gawler Ranges Protected Area Rangers - Wudinna
- 74 Nepaburna - Northern Flinders Rangers (IPA)
- 75 Ngamindjeri Rangers - Coorong
- 76 Raukkan Rangers - Raukkan
- 77 Riverland Rangers - Bermera/Renmark
- 78 Yalata IPA Ranger Program - Yalata (IPA)

## Victoria

- 79 Budj Bim Rangers - Heywood (IPA)
- 80 Yorta Yorta Rangers - Echuca/Barmah

## Tasmania

- 81 Preminghana & Saltwater River Rangers (IPA)
- 82 Tasmanian Aboriginal Centre - milyithina pakana - Hobart (IPA)
- 83 Tasmanian Aboriginal Trainee Rangers - State Wide Locations



Note: Project locations are approximate only and the on-ground activities may extend beyond the point identified on the map.