



## Notice to Tourism Industry – 30 May 2008

### Forecast opening times for key visitor sites in Kakadu National Park

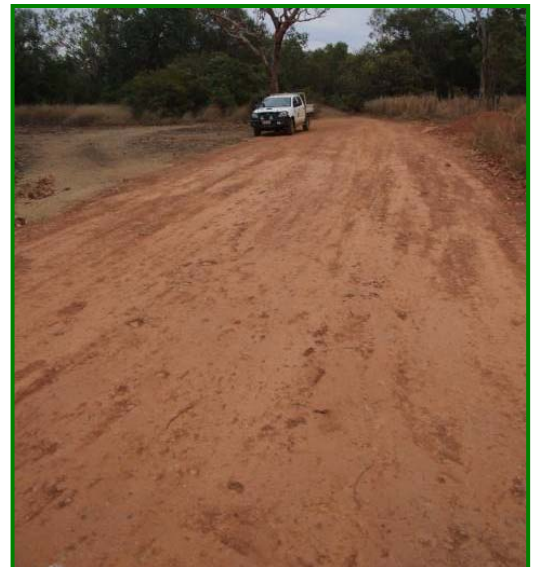
This notification is a forecast of expected opening times for key visitor sites across Kakadu National Park. Please note that predicted dates are subject to change should opening plans be impeded or contracted works be delayed. As the season progresses we will regularly update this information and advise of any changes.

The Kakadu road and access report is also a key source of information. It is distributed daily during the transition into the dry season. In the dry season it is updated weekly or as changes occur. Road reports are available at <http://www.environment.gov.au/parks/kakadu/visitor-information/road-report.html> or by email. If you have not already subscribed to the daily email distribution please e-mail [kakadunationalpark@environment.gov.au](mailto:kakadunationalpark@environment.gov.au).

Park staff aim to open visitor sites as soon as is practicably possible. The images below and on the following page showcase the work required to get various sites ready before they can open to the public. Changes which have been made to earlier forecasts are highlighted in yellow.



**Image 1 – Washouts on the road to Maguk – before repairs** – After each wet season, many of the unsealed roads require significant work to restore them for visitors. They need to dry out first, so that we can get the heavy machinery onto them so that they can get the repairs underway.



**Image 2 – Maguk road – After repairs** – Roadworks are now finalised, and all washouts on this road have been repaired.



**Image 3 – Baiting a croc trap** – This is one of the traps in the Maguk area. Rangers set traps in all of our crocodile management zones to remove any estuarine crocs so that visitors can safely access the area.



**Image 4 – A baited croc trap** – The bait is attached to a rope that holds open the trap door. When a croc swims in and takes the bait, it pulls on the rope and this releases the pin on trap door, which snaps shut behind it.



**Image 5 – Night time spotlighting surveys** – In addition to setting croc traps, we also conduct night time surveys where spotlights are used to pick up eye-shines of any crocs that haven't been trapped yet.



**Image 6 – This large croc came out of Jim Jim creek last week.** To date, there have been four estuarine crocs removed from the Jim Jim and Twin Falls area and final croc surveys are underway.

Visitor Site	Current Status	Forecasted Opening	Comments
<b>East Alligator District</b>			
Ubirr Art site	Open	N/A	Ubirr art site is open daily 8:30am until sunset.
Magela Creek (road to Ubirr)	Open	N/A	
Cahills Crossing	Open	N/A	4WD High Clearance recommended, drive with care.
Merl Campground	Open	N/A	Merl Campground 1 is open for tents, caravans and generators. Minor repairs are required to Merl 2 before this part of the campground opens.
Manggarre Walk	Open	N/A	
Bardedjilidji Sandstone Walk	Open	N/A	The full walk is now open. Please take note of crocodile warning signs along the river.
Sandstone & River Walk	Closed	October	Major structural repairs are required for Catfish Creek bridge located along this walk. These works will not be completed until later in the year, therefore, this walk will remain closed until further notice.
<b>Nourlangie District</b>			
Nourlangie Rock	Open	N/A	
Nanguluwur Art Site	Open	N/A	2WD with care. Please take care on the walking track as there is some water damage which occurred during the wet season. Repairs to this track will be undertaken during mid dry season.
Nawurlandja Lookout	Open	N/A	
Anbangbang Billabong & Walking Track	Closed	Early June	The water is receding quite quickly. The area will open in the next few days, however the walking track around the billabong will remain closed until the water recedes further as there is a very large crocodile still in the area.
Gubara	Open	N/A	2WD.
Sandy Billabong	Closed	Early June	This area is still too wet with high water levels in the camping area. When the water recedes crocodile surveys will take place. Fortunately there are no major washouts on the road in however it requires further drying out.
Muirella Park	Open	N/A	
Mirrai Lookout	Open	N/A	
Bubba Wetland Walk	Closed	Early-mid June	This walk usually opens up in stages. Presently the water level is too high.
Illigadjarr Walk	Closed	Mid June	This walk usually opens up in stages. Another assessment of the walk has been made this week; the Malabanjbandju Creek is still flowing and water levels are still very high.
Burdulba Camping Area	Open	N/A	
Malabanjbandju Caravan	Open	N/A	
Malabanjbandju Tent Area	Open	N/A	
Barrk Walk	Open	N/A	
<b>South Alligator District</b>			
Mamukala	Open	N/A	The observation building is open. The 3 km walking track has now fully opened.
Gu-ngarre Walk	Closed	Early June	Water levels are still high on the part of the track which runs along the edge of the billabong. This walk will not re-open until water levels drop to a safe level as there is a significant crocodile safety risk.
2 Mile Hole	Open	N/A	4WD only.
4 Mile Hole	Closed	Early June	Final preparations to prepare the camping area are underway. Crocodile surveys will also take place over the next few days and the area will open shortly.
West Alligator Head	Closed	Late July	Rangers conducted aerial surveys over the Manassie floodplain to assess the water levels in the region. A high volume of water remains over the

Visitor Site	Current Status	Forecasted Opening	Comments
			track and staff are not yet able to access by road to assess what other work is required for this visitor site.
Red Lily Billabong	Closed	Mid June	The access track to these areas is open only as far as Alligator Billabong. Work is required on the track from the other end (Arnhem Highway) before this will be available to access.
Bucket Billabong	Closed		
Alligator Billabong	Open	N/A	Access is only available from the Old Jim Jim road entrance and camping is only permitted at the southern end of the billabong.
<b>Jim Jim District</b>			
Jim Jim Billabong Campground	Closed	Early June	The boat launch area is accessible, but the campground remains closed as final preparations for opening take place.
Yellow Water Road & boardwalk	Open	N/A	The full boardwalk has now opened.
Home Billabong Walking Track	Closed	Late June	The walking track is still very wet water and there is a high croc risk here. As soon as access is available, the track will be trimmed back and cleared to prepare for opening.
Jim Jim Falls and Twin Falls Gorge Area	Closed	Early June	<p>Jim Jim Falls Gorge, the Barrk Marlam Walk and the top of Twin Falls Gorge are all likely to open mid next week. Official notification will be provided through the daily road and access update report.</p> <p>Crocodile surveys in the area are nearing completion, with further ones scheduled for this weekend. A total of four estuarine crocodiles have been removed to date. Roadworks are now also complete.</p> <p>The shuttle boats in Twin Falls Gorge are being installed on Monday 2<sup>nd</sup> June. The floating boardwalk will be installed shortly afterwards.</p>
Garnamarr Campground	Closed	Early June	Campground preparation is nearing completion. There is an issue with the water tanks and when the area opens, there is the potential that the water supply will be minimal until the contractors have been able to repair the system. Further updates will be provided when the area opens.
Mardugal 1 Campground (caravans)	Open	N/A	
Mardugal 2 Campground (tents)	Open	N/A	
Mardugal Billabong Walk	Closed	Early June	Water levels have dropped further and preparations required to prepare this walk for visitors are underway.
Gun-gardun Walk	Open	N/A	
Maguk Campground & Day Use Area	Closed	Early June	Final croc surveys are underway. To date, the surveys have only detected four freshwater crocodiles. The priority for this area is to open it for day use and the campground may remain closed for a short while until slashing, burning and cleaning of amenities is complete. Roadworks on the access track have been finalised.
Graveside Gorge	Closed	Early July	This area needs to dry out further before rangers can fully assess the access into the gorge and any maintenance that may be required on the track.
<b>Mary River District</b>			
Kambolgie Campground	Open	N/A	2WD with care.
Yurmikmik Walks	Open	N/A	2WD with care. Water is slowing down in these areas, however there will still be some water there for the next few weeks.
Gunlom & campground area	Open	N/A	The campground manager is on site and the Gunlom Kiosk is also in operation. Hours of opening may vary depending on visitor numbers - check with the kiosk for up to date times.
Jarrangbarntmi (Koolpin Gorge)	Open	N/A	4WD recommended.
Guratba/Gimbat Day Use area	Closed	Early June	The road leading into this area is being graded and day use area preparations are underway, including slashing and burning.
Rockholes	Open	N/A	
Bukbukluk Lookout	Open	N/A	
Gungurul Campground	Open	N/A	
Gungurul Lookout & River Walk	Open	N/A	