

SOME BASIC FACTS

The building lies within the boundaries of the Mirarr Gun-djeihmi clan estate.

Bowali is the Gun-djeihmi name for the creek which drains the area.

The total cost of the project was \$4 million. This included building, display, furniture, signage and fittings, car park and access road.

There was a two year consultation, planning and design period followed by a one year building period.

The building was designed to incorporate the existing slide show theatre.

The building is 168m long.

Local Aboriginal associations (Djabulukgu and Gagudju) and park staff have sourced rammed earth material, rocks, logs and display items.

Most timbers used are native to the Top End including ironwood and tiwi eucalypt. No rainforest or imported timbers have been used.

12,000 lineal metres of ironwood and floor boarding is used in the building.

The pre-cast cement columns were coloured to match the rammed earth walls, and textured around the base to match the local ground texture.

A formalised billabong and creek bed are incorporated in the Centre to catch and drain the monsoonal rains.

Airconditioning has only been installed in the theatrettes, offices and craft gallery, where it is necessary for a visitor comfort and storage of goods and equipment.

The cooling system for the Administration building is designed with a zoning system for democratic choice between air conditioning and natural ventilation through louvres.

CREDIT WHERE CREDIT IS DUE

Architects:

Glenn Murcutt & Associates Pty Ltd - Sydney
Troppo Architects Pty Ltd - Darwin
(Architects in Association)

Structural Services Engineers:

Meinhardt (NT) Pty Ltd

Landscape Architects:

Clouston - Darwin

Display Designers:

Concepts: Simons Lancashire Design - Melbourne
Installation/fit out: David Lancashire Design - Melbourne

Builder:

PW Baxter & Associates Pty Ltd - Darwin

Interior Design:

Troppo Architects Pty Ltd - Darwin

Signage:

Design: David Lancashire Design - Melbourne
Contractor: Excecon Pty Ltd - Melbourne

Special Paint Finishes:

Colin Holt - Darwin
David Lancashire - Melbourne

Stained Glass Windows:

Sally Mumford/Troppo architects - Darwin

Rammed Earth Walls:

Ramtec Pty Ltd - Perth

Landscape Contractors:

Djabulukgu Association/PW Baxter & Associates Pty Ltd - Darwin

An-mak anme Cafe and Marrawuddi Gallery:

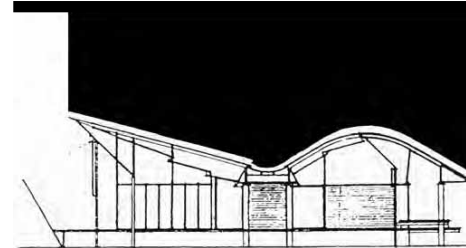
Managers: Djabulukgu Association

**Ngad arri bolknahan
Look after this country**

Park Notes



Australian Government
Director of National Parks



BOWALI VISITOR CENTRE

(pronounced "Bor warley")



Welcome to the Bowali Visitor Centre.

The Building

The architects, builders and display designers have worked closely with traditional land owners and Parks Australia staff to create a visitor centre of an international standard.

Rammed earth walls, ironwood floors, and natural stone features help blend the Centre into Kakadu's landscape.

Wide verandahs offer a close relationship with the bush setting, and generous shade. The roofline and east-west aspect encourage air flow.

The building has won numerous awards since being officially opened in August 1994.

- 1994 Northern Territory chapter of the Royal Australian Institute of Architects; 'Tracey Memorial Award'
'People's Choice Award'

"The novel incorporation of rustic corroded materials of the bush and the Top End culture is a significant turning point in NT architecture. Natural materials are used in their own right to create a patina of colour, texture and pattern reflecting the fabric of the Kakadu bush", the judges said.

"The incorporation of these environmental details is masterful, without being kitsch."
NT News 25 June 1994

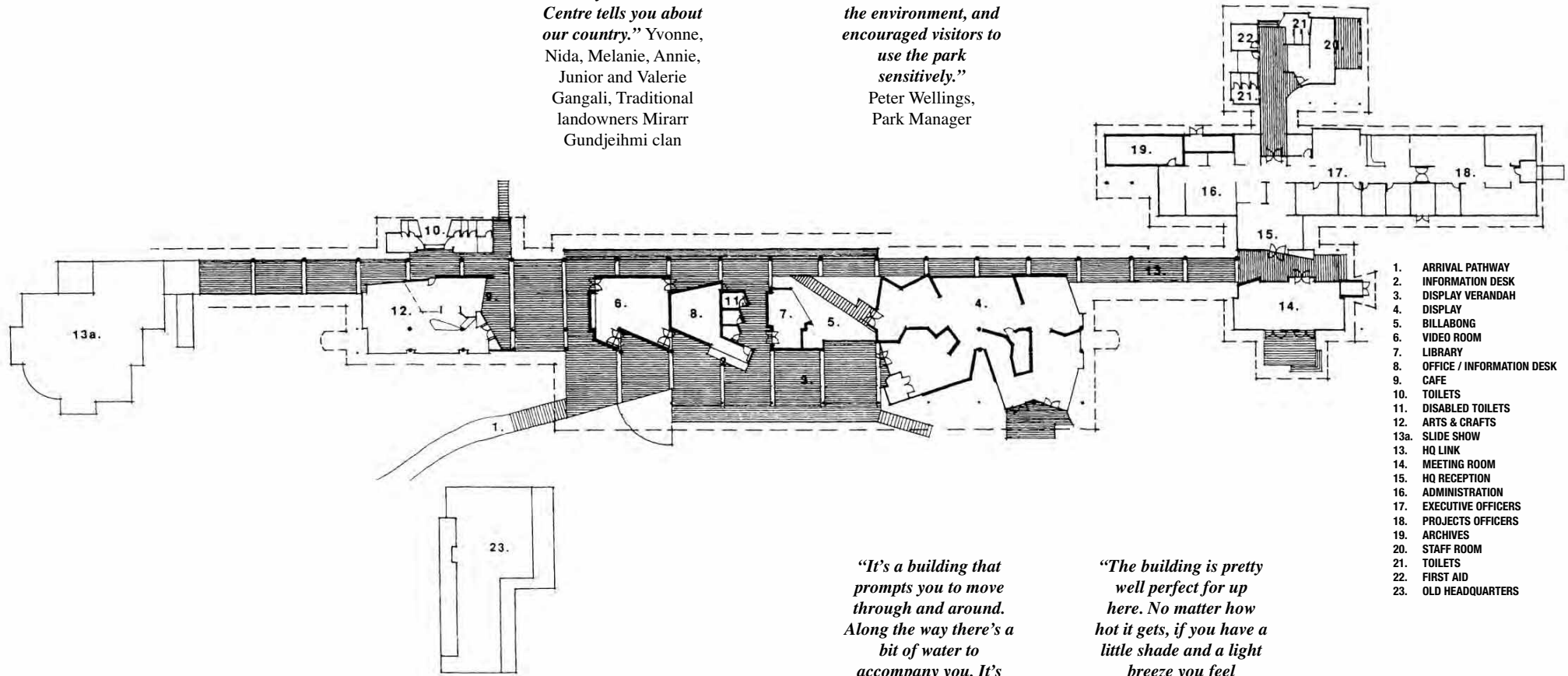
- 1994 Royal Institute of Architecture; 'Sir Zelman Cowan Award' for National Award for Civic Building.
- 1994 - 1995 BHP Sheet and Coil Products and Metal Building Industries; 'Award of Excellence'
- 1995 Northern Territory Brolga Award; 'Tourism Development Projects'

The Display

The display illustrates two views of Kakadu: the Gukburlerri (Aboriginal) and Guhbele (non-Aboriginal) views. Visitors are invited to journey through Kakadu's habitats, as the South Alligator River meanders through the landscape, from source to sea. It is hoped that visitors will leave the display understanding more about the park and realising, we all have a responsibility to look after this country.

“We Aboriginal people welcome you to our country. This Visitor Centre tells you about our country.” Yvonne, Nida, Melanie, Annie, Junior and Valerie Gangali, Traditional landowners Mirarr Gundjeihmi clan

“Our aim was to provide a building which blended in with the environment, and encouraged visitors to use the park sensitively.”
Peter Wellings,
Park Manager



- 1. ARRIVAL PATHWAY
- 2. INFORMATION DESK
- 3. DISPLAY VERANDAH
- 4. DISPLAY
- 5. BILLABONG
- 6. VIDEO ROOM
- 7. LIBRARY
- 8. OFFICE / INFORMATION DESK
- 9. CAFE
- 10. TOILETS
- 11. DISABLED TOILETS
- 12. ARTS & CRAFTS
- 13a. SLIDE SHOW
- 13. HQ LINK
- 14. MEETING ROOM
- 15. HQ RECEPTION
- 16. ADMINISTRATION
- 17. EXECUTIVE OFFICERS
- 18. PROJECTS OFFICERS
- 19. ARCHIVES
- 20. STAFF ROOM
- 21. TOILETS
- 22. FIRST AID
- 23. OLD HEADQUARTERS

“It’s a building that prompts you to move through and around. Along the way there’s a bit of water to accompany you. It’s like Kakadu.”
Phil Harris,
Troppo Architects

“The building is pretty well perfect for up here. No matter how hot it gets, if you have a little shade and a light breeze you feel comfortable.”

We tried to use as many local contractors as we could. We were able to put on an apprentice carpenter and joiner.”
Steve Conolly,
PW Baxter and Associates

The building was designed by Glen Murcutt Pty Ltd and Troppo Architects Pty Ltd. Glen Murcutt is the recipient of Finland’s Alvar Aalto Medal, architecture’s Nobel Prize.

“We tried to capture the excitement of the park in the display. It was important to use as many natural materials as possible.”
David Lancashire,
David Lancashire Designs

“We’re very sympathetic to one another. One idea is another persons idea, is my idea, is their idea.”
Glen talking about the joint project with Troppo Architects.
Glen Murcutt.
Glen Murcutt Pty Ltd

FACILITIES	SUGGESTED TIME	CAPACITY (people)
Display verandah	10 minutes	40
Information desk	variable	5
Display	25 minutes	60
An-mak anme Cafe	variable	48
Marrawuddi Craft Gallery	variable	20
Video room	45 minutes	50
Slide show	25 minutes	40
Library	variable	6
Toilets		
Baby Care/ Disabled toilets		
Walk to Jabiru - 2km	45 minutes	