

Appendix A

Tailings corridor review: proposed report contents

Executive summary

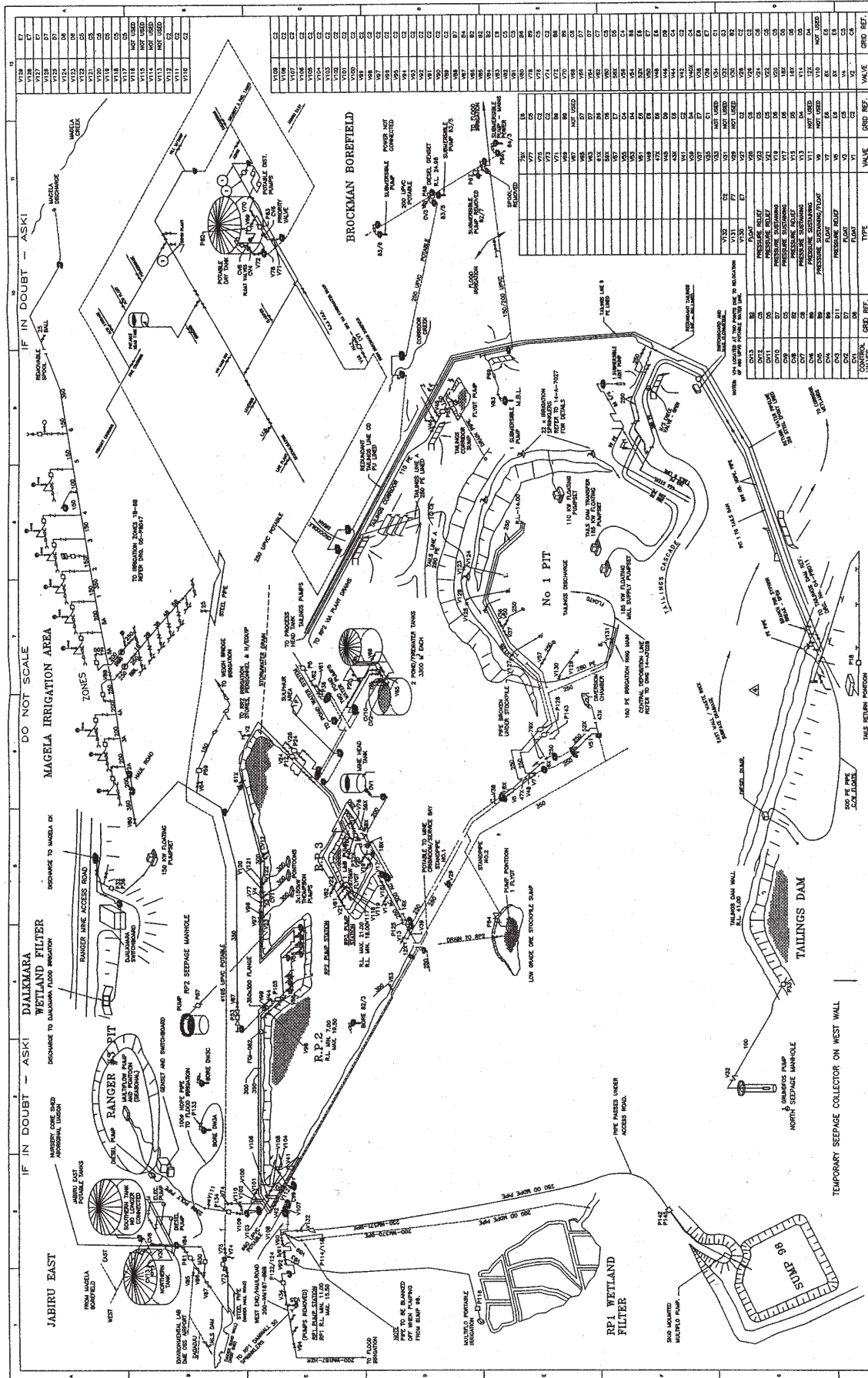
- 1 Introduction (include definition of scope of report)
- 2 Overview description of existing system
 - 2.1 System process and layout description
 - 2.2 Design and operating philosophy
- 3 Review of original design
 - 3.1 Original design
 - Corridor design
 - Tailings and process water pumping and piping system
 - Environmental
 - 3.2 Summary of changes since the original design and construction
 - 3.3 Current suitability of key aspects of the original design
- 4 Review of existing system and current operating, maintenance and system development regimes
 - 4.1 Current inspection, operating, maintenance and development regimes and responsibilities
 - 4.2 Pipe materials and condition/integrity
 - 4.3 Pipe support
 - 4.4 Pipe jointing
 - 4.5 Redundant pipework
 - 4.6 Maintenance of corridor (cover aspects such as cleaning, grading, corridor wall, design clearances etc)
 - 4.7 External threats (eg stockpile encroachment)
 - 4.8 Current developments
 - 4.9 Environmental (if not fully covered in earlier item 4 discussions)
- 5 Anticipated future developments
- 6 Discussion and recommendations

APPENDICES

- A Process flow diagram
- B Schematic system layout
- C Photographs

Appendix B

Water management system pictorial



VALVE	GRID REF.	TYPE	GRID REF.	VALVE	GRID REF.
V101	C2	FLAT	V101	V1	C2
V102	C2	FLAT	V102	V2	C2
V103	C2	FLAT	V103	V3	C2
V104	C2	FLAT	V104	V4	C2
V105	C2	FLAT	V105	V5	C2
V106	C2	FLAT	V106	V6	C2
V107	C2	FLAT	V107	V7	C2
V108	C2	FLAT	V108	V8	C2
V109	C2	FLAT	V109	V9	C2
V110	C2	FLAT	V110	V10	C2
V111	C2	FLAT	V111	V11	C2
V112	C2	FLAT	V112	V12	C2
V113	C2	FLAT	V113	V13	C2
V114	C2	FLAT	V114	V14	C2
V115	C2	FLAT	V115	V15	C2
V116	C2	FLAT	V116	V16	C2
V117	C2	FLAT	V117	V17	C2
V118	C2	FLAT	V118	V18	C2
V119	C2	FLAT	V119	V19	C2
V120	C2	FLAT	V120	V20	C2
V121	C2	FLAT	V121	V21	C2
V122	C2	FLAT	V122	V22	C2
V123	C2	FLAT	V123	V23	C2
V124	C2	FLAT	V124	V24	C2
V125	C2	FLAT	V125	V25	C2
V126	C2	FLAT	V126	V26	C2
V127	C2	FLAT	V127	V27	C2
V128	C2	FLAT	V128	V28	C2
V129	C2	FLAT	V129	V29	C2
V130	C2	FLAT	V130	V30	C2
V131	C2	FLAT	V131	V31	C2
V132	C2	FLAT	V132	V32	C2
V133	C2	FLAT	V133	V33	C2
V134	C2	FLAT	V134	V34	C2
V135	C2	FLAT	V135	V35	C2
V136	C2	FLAT	V136	V36	C2
V137	C2	FLAT	V137	V37	C2
V138	C2	FLAT	V138	V38	C2
V139	C2	FLAT	V139	V39	C2
V140	C2	FLAT	V140	V40	C2
V141	C2	FLAT	V141	V41	C2
V142	C2	FLAT	V142	V42	C2
V143	C2	FLAT	V143	V43	C2
V144	C2	FLAT	V144	V44	C2
V145	C2	FLAT	V145	V45	C2
V146	C2	FLAT	V146	V46	C2
V147	C2	FLAT	V147	V47	C2
V148	C2	FLAT	V148	V48	C2
V149	C2	FLAT	V149	V49	C2
V150	C2	FLAT	V150	V50	C2
V151	C2	FLAT	V151	V51	C2
V152	C2	FLAT	V152	V52	C2
V153	C2	FLAT	V153	V53	C2
V154	C2	FLAT	V154	V54	C2
V155	C2	FLAT	V155	V55	C2
V156	C2	FLAT	V156	V56	C2
V157	C2	FLAT	V157	V57	C2
V158	C2	FLAT	V158	V58	C2
V159	C2	FLAT	V159	V59	C2
V160	C2	FLAT	V160	V60	C2
V161	C2	FLAT	V161	V61	C2
V162	C2	FLAT	V162	V62	C2
V163	C2	FLAT	V163	V63	C2
V164	C2	FLAT	V164	V64	C2
V165	C2	FLAT	V165	V65	C2
V166	C2	FLAT	V166	V66	C2
V167	C2	FLAT	V167	V67	C2
V168	C2	FLAT	V168	V68	C2
V169	C2	FLAT	V169	V69	C2
V170	C2	FLAT	V170	V70	C2
V171	C2	FLAT	V171	V71	C2
V172	C2	FLAT	V172	V72	C2
V173	C2	FLAT	V173	V73	C2
V174	C2	FLAT	V174	V74	C2
V175	C2	FLAT	V175	V75	C2
V176	C2	FLAT	V176	V76	C2
V177	C2	FLAT	V177	V77	C2
V178	C2	FLAT	V178	V78	C2
V179	C2	FLAT	V179	V79	C2
V180	C2	FLAT	V180	V80	C2
V181	C2	FLAT	V181	V81	C2
V182	C2	FLAT	V182	V82	C2
V183	C2	FLAT	V183	V83	C2
V184	C2	FLAT	V184	V84	C2
V185	C2	FLAT	V185	V85	C2
V186	C2	FLAT	V186	V86	C2
V187	C2	FLAT	V187	V87	C2
V188	C2	FLAT	V188	V88	C2
V189	C2	FLAT	V189	V89	C2
V190	C2	FLAT	V190	V90	C2
V191	C2	FLAT	V191	V91	C2
V192	C2	FLAT	V192	V92	C2
V193	C2	FLAT	V193	V93	C2
V194	C2	FLAT	V194	V94	C2
V195	C2	FLAT	V195	V95	C2
V196	C2	FLAT	V196	V96	C2
V197	C2	FLAT	V197	V97	C2
V198	C2	FLAT	V198	V98	C2
V199	C2	FLAT	V199	V99	C2
V200	C2	FLAT	V200	V100	C2

ENERGY RESOURCES OF AUSTRALIA LTD
 WATER MANAGEMENT PICTORIAL
 PROJECT NUMBER: 8004
 SHEET: 4
 DATE: 05.1.80

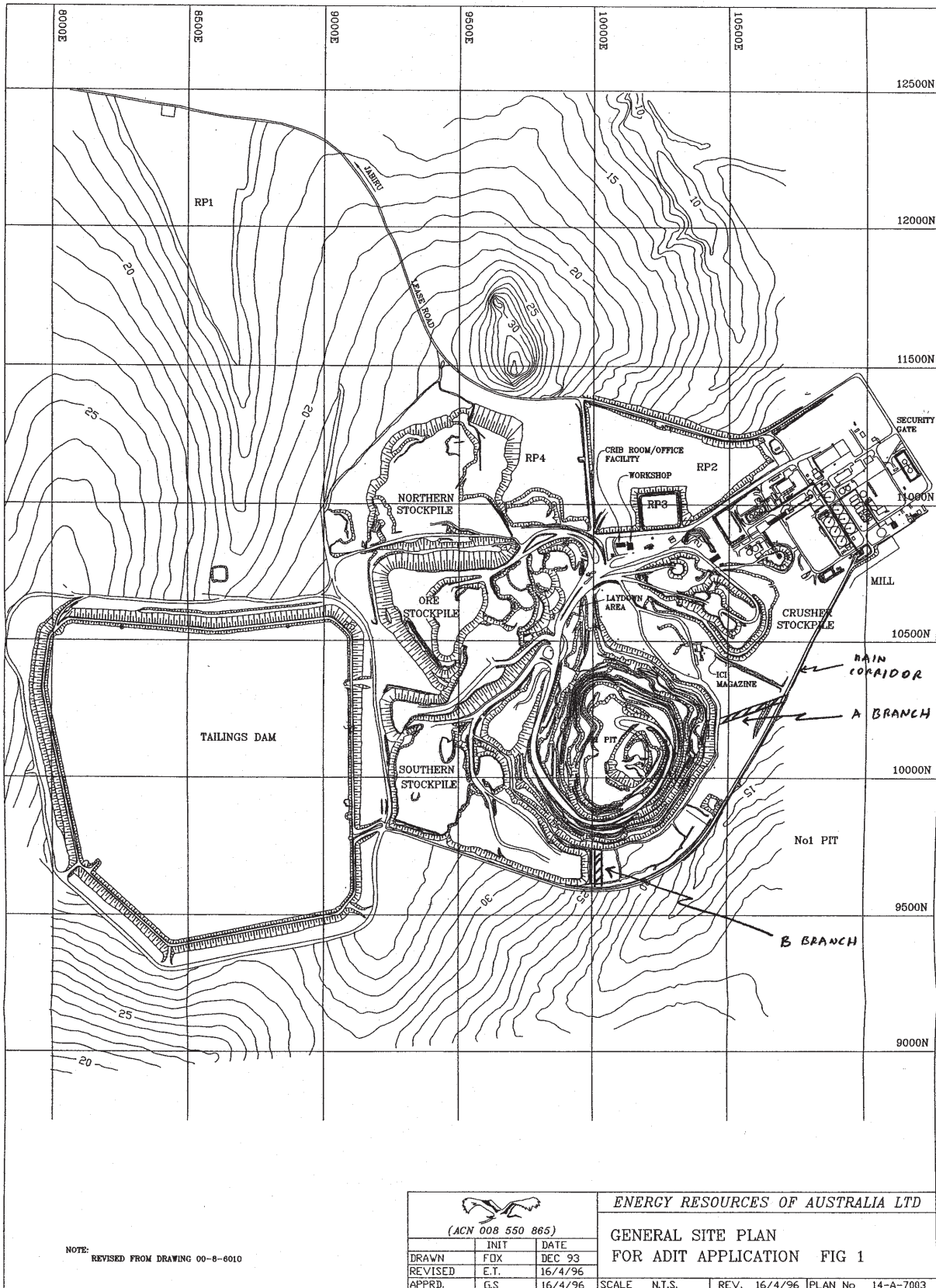
LEGEND:
 PUMP
 VALVE
 CHECK VALVE
 METER
 CONTROL VALVE
 VALVE
 VALVE
 VALVE

NOTES:
 1. ALL DIMENSIONS ARE IN METERS UNLESS OTHERWISE STATED.
 2. ALL DIMENSIONS ARE TO FACE UNLESS OTHERWISE STATED.
 3. ALL DIMENSIONS ARE TO CENTERLINE UNLESS OTHERWISE STATED.
 4. ALL DIMENSIONS ARE TO CENTERLINE UNLESS OTHERWISE STATED.
 5. ALL DIMENSIONS ARE TO CENTERLINE UNLESS OTHERWISE STATED.
 6. ALL DIMENSIONS ARE TO CENTERLINE UNLESS OTHERWISE STATED.
 7. ALL DIMENSIONS ARE TO CENTERLINE UNLESS OTHERWISE STATED.
 8. ALL DIMENSIONS ARE TO CENTERLINE UNLESS OTHERWISE STATED.
 9. ALL DIMENSIONS ARE TO CENTERLINE UNLESS OTHERWISE STATED.
 10. ALL DIMENSIONS ARE TO CENTERLINE UNLESS OTHERWISE STATED.


REFERENCE DRAWING DESCRIPTION:
 N.T.S.
 BY: [Signature]
 DATE: [Date]

Appendix C

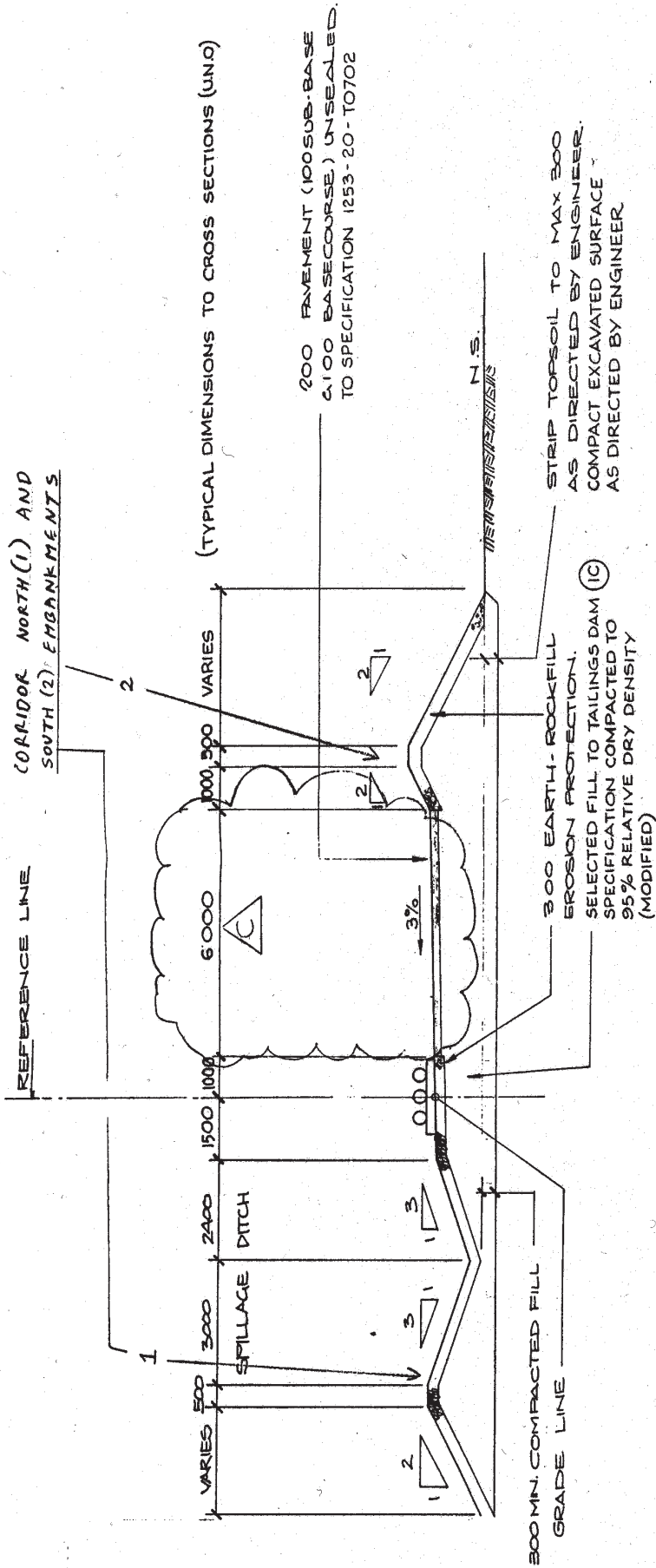
Corridor Layout



NOTE: REVISED FROM DRAWING 00-8-6010

 (ACN 008 550 865)			ENERGY RESOURCES OF AUSTRALIA LTD			
DRAWN	FOX	DATE	GENERAL SITE PLAN			
REVISED	E.T.	16/4/96	FOR ADIT APPLICATION FIG 1			
APPRD.	G.S.	16/4/96	SCALE	N.T.S.	REV. 16/4/96	PLAN No 14-A-7003

Appendix D Corridor section



SECTION **A**