

# ULURU-KATA TJUTA NATIONAL PARK



Name

Date

## NGINTAKA ACTIVITY BOOK

# TJUKURPA QUIZ

A long time ago, in the time of *Tjukurpa* when everything was created, giant ancestral beings made special places at *Uluru*. The elders tell these stories to children to teach them how to behave.

1. On the Kuniya Walk what are the names of the two snakes that battled here?  
\_\_\_\_\_ and \_\_\_\_\_

2. On the Mala Walk what can you see on the wall of the *Kulpi Nyiinkaku* cave?  
\_\_\_\_\_

3. What is the physical evidence of *Tjukurpa* called?  
\_\_\_\_\_

4. What four ancestral beings are on the Cultural Centre logo?  
\_\_\_\_\_, \_\_\_\_\_, \_\_\_\_\_, and \_\_\_\_\_

## BUSHFOODS

Desert survival depends on knowing what foods are around and how to find them. *Anangu* know these secrets. Below are some bushfoods found here.

Can you match the words with the pictures?

*Arnguli* (bush plum)

*Wangunu* (native woollybutt grass)

*Kaliny-kalinypa* (honey grevillea)

*Tjala* (honey ant)

*Kuka* (meat animal)

*Maku* (witchetty grub)



# PLANTS AND HABITATS

Find each of the words listed below.

o	n	b	d	e	c	m	y	e	o	a	a	s	h	d
p	e	l	y	t	k	h	u	e	y	t	t	s	b	p
i	l	g	t	a	f	l	l	l	r	i	u	n	h	t
v	y	t	l	p	e	n	e	p	g	b	y	a	o	a
p	n	s	t	o	o	e	y	i	y	a	u	n	e	a
p	w	k	i	d	k	a	o	t	r	e	s	e	d	u
e	l	t	t	a	w	a	t	u	j	t	a	t	a	k
b	h	k	r	p	d	e	r	p	l	o	t	b	r	p
t	a	a	d	a	h	r	e	u	n	e	a	i	k	a
c	p	y	d	c	e	e	e	t	w	r	l	v	c	n
o	e	r	t	v	y	r	s	p	i	n	i	f	e	x
e	n	i	v	d	o	o	w	r	a	e	p	s	m	k
o	w	o	v	i	t	l	d	v	e	p	u	l	i	s
i	p	w	e	v	r	y	e	u	d	a	r	p	a	e
u	i	t	s	u	v	b	l	o	o	d	w	o	o	d

Pila

Tali

Puli

Karu

Ngaru

Mulga

Spinifex

Desert oak

Kata Tjuta wattle

Spearwood vine

Parakeelya

Witchetty bush

Paper daisy

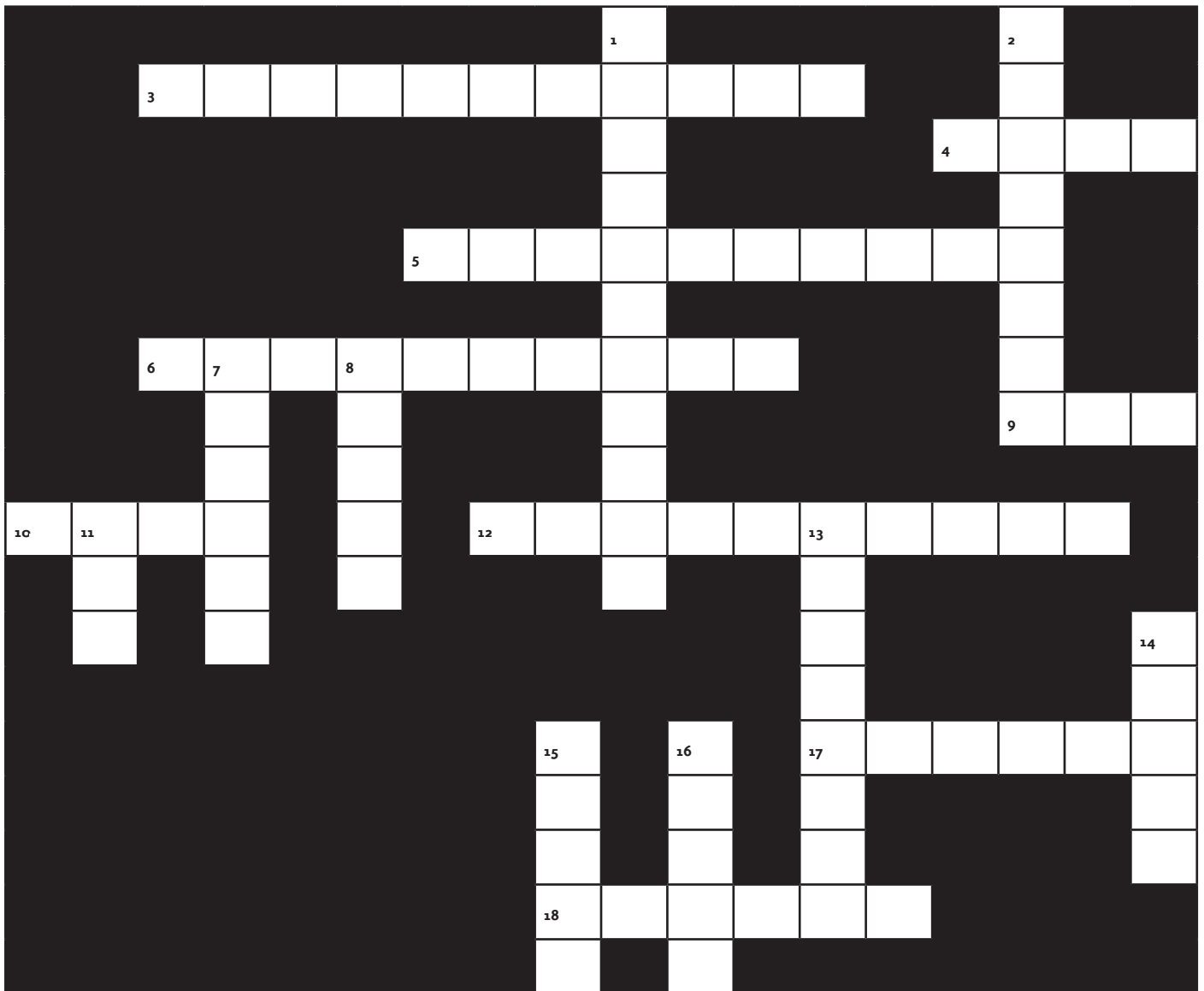
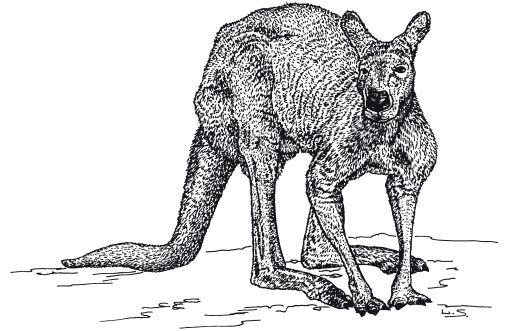
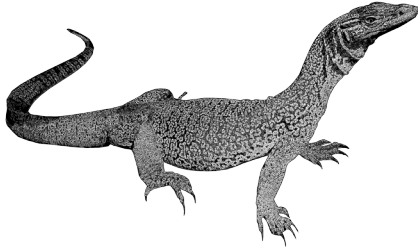
Puti

Bloodwood





# WHAT ANIMALS LIVE HERE?





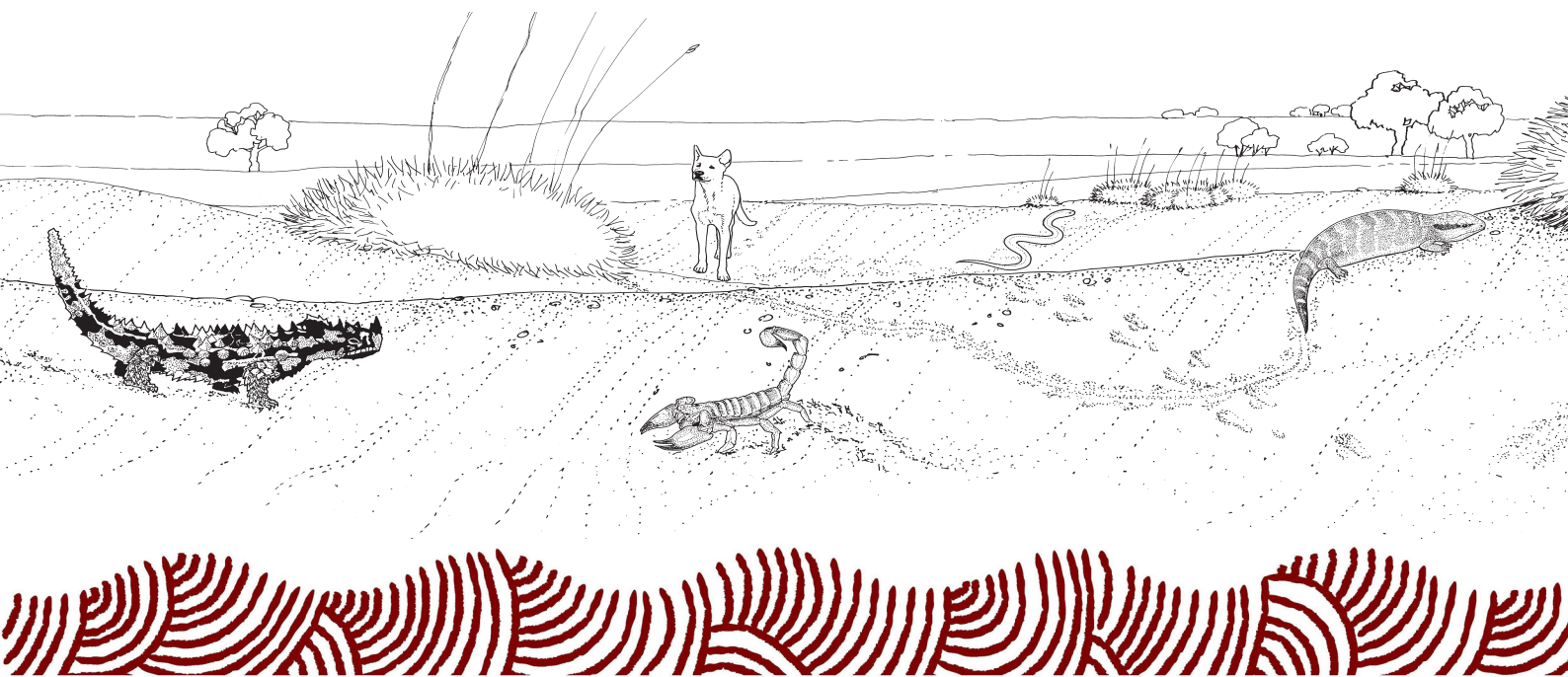
# CLUES

## ACROSS

3. A spiky lizard. \_ \_ \_ \_ \_ - \_ \_ \_ \_ \_
4. A *maku* is a witchetty \_ \_ \_ \_ \_
5. What type of snake is *Kuniya*? \_ \_ \_ \_ \_ - \_ \_ \_ \_ \_
6. *Lungkata* is a \_ \_ \_ \_ \_ - \_ \_ \_ \_ \_ lizard.
9. Large flightless bird. \_ \_ \_ \_ \_
10. *Pitjantjatjara* name for the rufous hare-wallaby. \_ \_ \_ \_ \_
12. A type of poisonous snake. \_ \_ \_ \_ \_ - \_ \_ \_ \_ \_
17. Type of snake, Stimson's \_ \_ \_ \_ \_
18. A *tinka* is a sand \_ \_ \_ \_ \_

## DOWN

1. Largest species of kangaroo. \_ \_ \_ \_ \_ - \_ \_ \_ \_ \_
2. Australia's largest monitor lizard. \_ \_ \_ \_ \_
7. A skink is a type of \_ \_ \_ \_ \_
8. Large bird of prey, wedge-tailed \_ \_ \_ \_ \_
11. The bushfood *tjala* is a honey \_ \_ \_ \_ \_
13. Dangerous arthropod with spike on tail \_ \_ \_ \_ \_
14. Native dog. \_ \_ \_ \_ \_
15. The park has four types of burrowing \_ \_ \_ \_ \_
16. Pink and grey parrot. \_ \_ \_ \_ \_

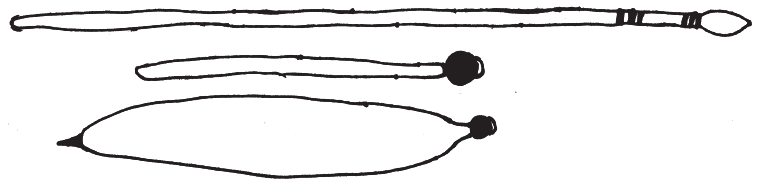


# TRADITIONAL TOOLS

For thousands of years, *Anangu* have made tools to help them gather, hunt and prepare food. Tools used by the men are for hunting animals like kangaroo and emu. Tools used by the women helped them dig for grubs and honey ants and are used for collecting and grinding seeds and fruit.

Can you match the tool with its picture?

*Wana* (digging stick)

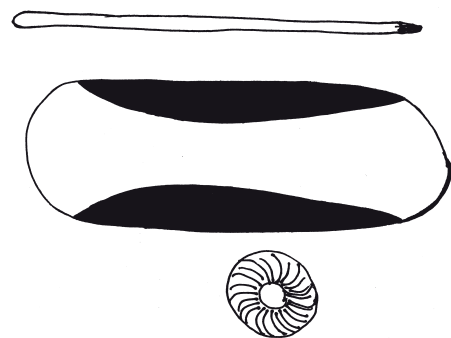


*Miru* (spear thrower)

*Tjiwa* (grinding stone)



*Kulata* (hunting spear)



*Piti* (bowl)

*Manguri* (head ring)

List two *watiku* (men's) tools?

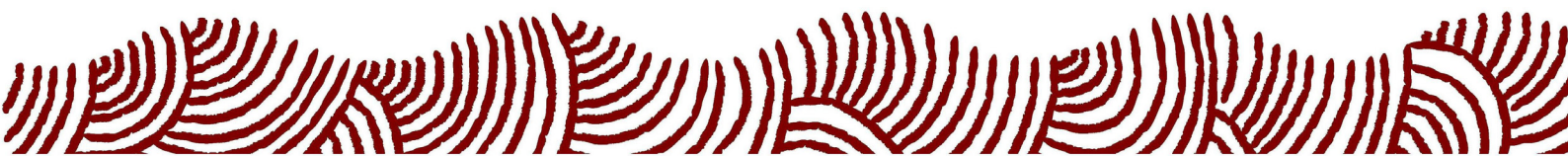
1. \_\_\_\_\_

2. \_\_\_\_\_

List two *minymaku* (women's) tools?

1. \_\_\_\_\_

2. \_\_\_\_\_



# ANSWERS

## TJUKURPA QUIZ

1. Kuniya and Liru
3. Tjukuritja

2. Rock art
4. Kuniya, liru, kurpany and mala

## BUSHFOODS

Arnguli



Kaliny-kaliny



Kuka



Wangunu



Tjala



Maku



## TRADITIONAL TOOLS

Pictures from top to bottom are:

Men's - kulata, miru

Women's - tjiwa, wana, piti, manguri

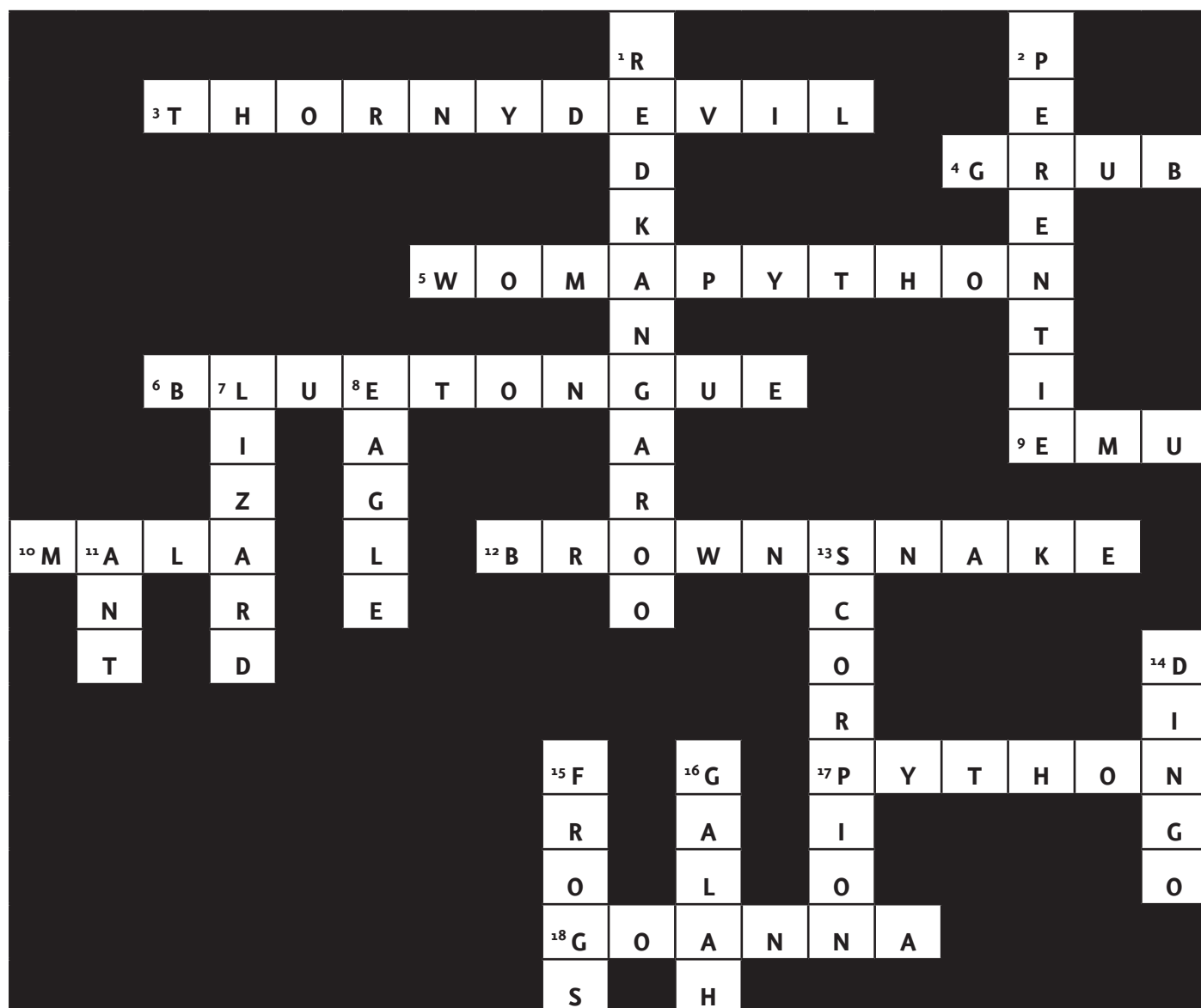
## WORDFINDER

						m				a			h	
							u		y			s		
								l			u	n		
	y						e		g	b	y			
		s				e		i	y	a				
			i		k	a	o	t	r	e	s	e	d	
e	l	t	t	a	w	a	t	u	j	t	a	t	a	k
			r		d	e	r	p			t			
		a			h	r		u			a			
	p			c			e				l			
			t				s	p	i	n	i	f	e	x
e	n	i	v	d	o	o	w	r	a	e	p	s		
	w									p	u	l	i	
						b	l	o	o	d	w	o	o	d



## WHAT ANIMALS LIVE HERE?

### CROSSWORD



We hope you have enjoyed this activity book and have  
learnt about the nature and culture at  
Uluru-Kata Tjuta National Park.

*Palya!*

