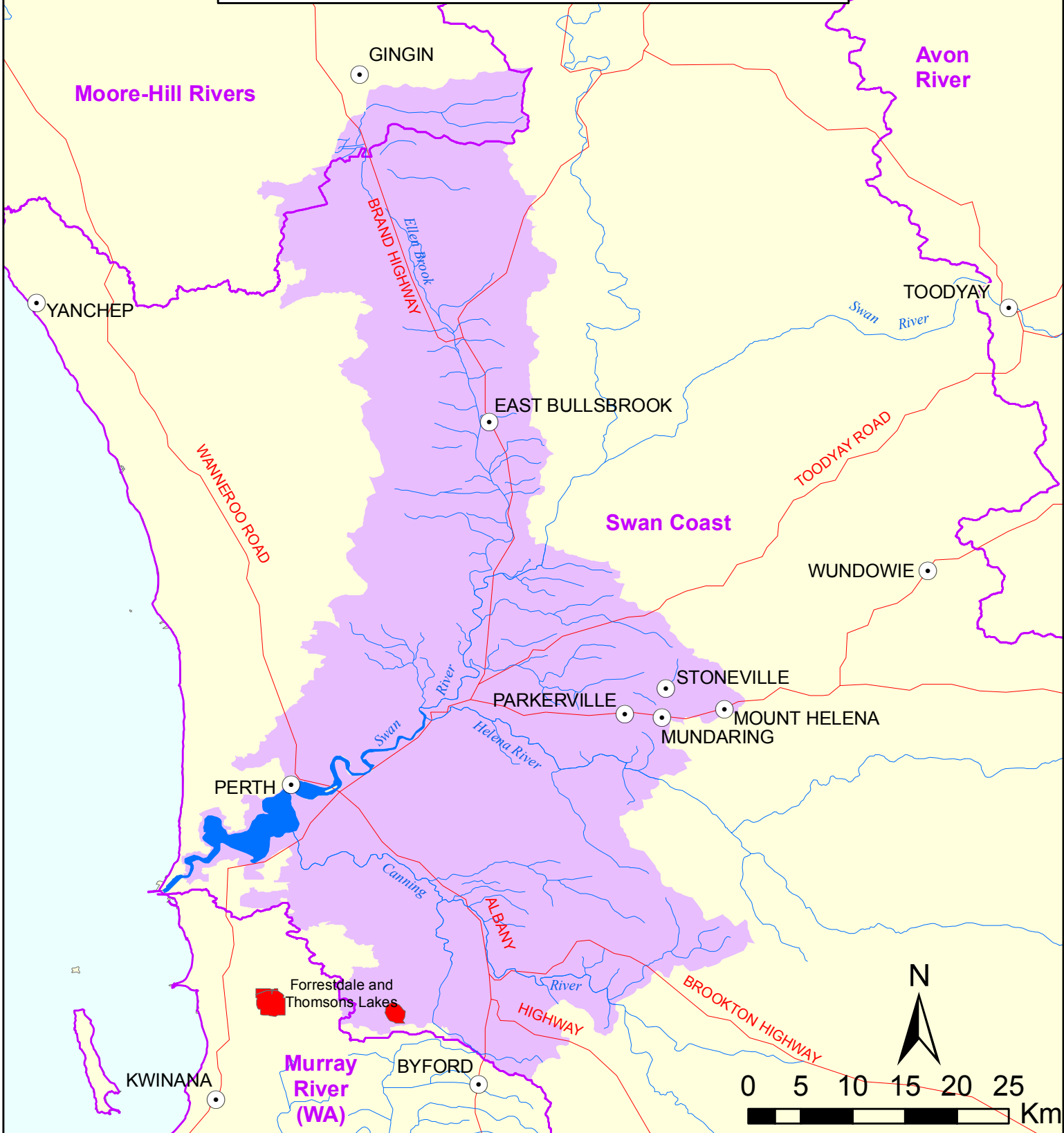


Swan Canning Estuary System



Data Sources:
Localities, Rivers, Roads, Drainage Divisions,
Drainage Basins:
© Commonwealth of Australia (Geoscience
Australia) 1997.

Ramsar wetlands:
© Commonwealth of Australia, The Department
of Sustainability, Environment, Water, Population
and Communities, 2010.

Geographic Coordinate System on the GDA 1994
Datum

Caveat:
All data are presumed to be correct as
received from data providers. No
responsibility is taken by the Commonwealth
for errors or omissions. The Commonwealth
does not accept responsibility in respect to
any information or advice given in relation to,
or as a consequence of anything
contained herein.

Ramsar wetlands are representative
only and may not depict the location of the
site with any accuracy

Map produced by:
Environmental Resources Information Network,
Department of Sustainability, Environment,
Water, Population and Communities, February 2011.

-  Towns
-  Watercourse
-  Ramsar wetlands
-  AWRC Drainage Basins
-  Roads



Australian Government

Department of Sustainability, Environment
Water, Population and Communities