



Australian Government
Department of the Environment

Draft Issues Paper for Sawfish and River Sharks:

Largetooth Sawfish (*Pristis pristis*)

Green Sawfish (*Pristis zijsron*)

Dwarf Sawfish (*Pristis clavata*)

Speartooth Shark (*Glyphis glyphis*)

Northern River Shark (*Glyphis garricki*)

2014



The recovery plan linked to this issues paper is obtainable from:

<http://www.environment.gov.au/topics/biodiversity/threatened-species-ecological-communities/recovery-plans/recovery-plans-open>.

While reasonable efforts have been made to ensure that the contents of this publication are factually correct, the Commonwealth does not accept responsibility for the accuracy or completeness of the contents, and shall not be liable for any loss or damage that may be occasioned directly or indirectly through the use of, or reliance on, the contents of this publication.

© Commonwealth of Australia 2014

This work is copyright. Apart from any use as permitted under the *Copyright Act 1968*, no part may be reproduced by any process without prior written permission from the Commonwealth, available from the Department of the Environment.

Image Credits:

Front Cover - left to right

- Largetooth Sawfish (*Pristis pristis*) in the Daly River. Photo courtesy of Richard Pillans.
- Speartooth Shark (*Glyphis glyphis*) on boat. Photo courtesy of Peter Kyne.
- Green Sawfish (*Pristis zijsron*) juvenile on a beach. Photo courtesy of Richard Pillans.

Contents

1	Summary	6
2	Introduction	7
2.1	Purpose.....	7
2.2	Objectives	7
2.3	Scope.....	7
2.4	Sources of Information	7
2.5	Recovery Planning Process	7
3	Biology and Ecology	8
3.1	Large tooth Sawfish (<i>Pristis pristis</i>)	8
3.2	Green Sawfish (<i>Pristis zijsron</i>)	16
3.3	Dwarf Sawfish (<i>Pristis clavata</i>)	21
3.4	Spine tooth Shark (<i>Glyphis glyphis</i>)	24
3.5	Northern River Shark (<i>Glyphis garricki</i>)	28
4	Conservation	32
4.1	Australian Government.....	32
4.2	State and Territory Listings.....	34
4.3	Non-legislative Listing	35
5	Threats to sawfish and river sharks.....	36
5.1	Fisheries bycatch	36
5.2	Recreational Fishing.....	41
5.3	Indigenous fishing	42
5.4	Illegal, unreported and unregulated fishing (IUU)	43
5.5	Habitat degradation and modification	43
5.6	Collection for Public Aquaria	44
5.7	Marine debris	45
6	Summary of Issues and future research directions.....	46
7	References	48
8	Appendix	56

List of Figures

Figure 1. Length-mass relationship for largetooth sawfish in Australian waters.....	10
Figure 2. Size and age data for Gulf of Carpentaria largetooth sawfish (n=41)..	10
Figure 3. Global distribution of largetooth sawfish (yellow) and areas of possible extinction (red). (IUCN 2013)	13
Figure 4. Map showing Australian distribution of largetooth sawfish.	14
Figure 5. Size and age data for Gulf of Carpentaria sawfish (n=18).....	17
Figure 6. Global distribution of largetooth sawfish (yellow) and areas of possible extinction (red). (IUCN 2013)	18
Figure 7. Map showing Australian distribution of green sawfish	19
Figure 8. Green sawfish catch per unit effort data for the Queensland Gulf of Carpentaria fisheries	20
Figure 9. Australian population of Dwarf sawfish.	23
Figure 10. Distribution of speartooth sharks.....	27
Figure 11. Distribution of northern river sharks.	31

List of Tables

Table 1. Species status under the <i>Environment Protection and Biodiversity Conservation Act 1999</i>	32
Table 2. Protected species status in Western Australia, Queensland, New South Wales and the Northern Territory.	34
Table 3. International status of sawfish and river shark species as determined by the IUCN and CITES.....	35
Table 4. The main Australian commercial fisheries that are known to interact with sawfish and river shark species.....	38

Abbreviations

Abbreviation	Title
ACIAR	Australian Centre for International Agricultural Research
AFMA	Australian Fisheries Management Authority
CITES	Convention on International Trade in Endangered Species of Wild Fauna and Flora
DSEWPac	Department of Sustainability, Environment, Water, Population and Communities
DEWHA	Department of Environment, Water, Heritage and the Arts
ECIFF	East Coast Inshore Finfish Fishery
EPBC Act	<i>Environment Protection and Biodiversity Conservation Act 1999</i>
FRMA	Fish Resources Management Act
IUCN	International Union for Conservation of Nature
IUU	Illegal, unreported and unregulated fishing
KGBMF	Kimberly Gillnet and Barramundi Managed Fishery
NDF	Non Detriment Finding
NPF	Northern Prawn Fishery
ONLF	Offshore Net and Line Fishery
PDTF	Pilbara Demersal Trawl Fishery
SOCI	Species of Conservation Interest
TL	Total Length
TSSC	Threatened Species Scientific Committee

1 Summary

This issues paper has been developed to provide background information to support the recovery plan for three species of sawfish and two species of river shark. The species covered under the plan are:

- Largetooth sawfish (*Pristis pristis*) [previously known as the freshwater sawfish, *Pristis microdon*]
- Green sawfish (*Pristis zijsron*)
- Dwarf sawfish (*Pristis clavata*)
- Speartooth shark (*Glyphis glyphis*)
- Northern river shark (*Glyphis garricki*)

All of these species inhabit the rivers, estuaries and inshore marine environments of northern Australia. The largetooth sawfish has a circumtropical distribution, however population structuring results in four geographic groupings in the Eastern Pacific, Eastern Atlantic, Western Atlantic and Indo-West Pacific. While the green sawfish and dwarf sawfish were once known to occur across the Indo-West Pacific region, distribution of dwarf sawfish is now possibly limited to Australia. The two river shark species are only found in Australia and Papua New Guinea.

There is little information on current population sizes or long term rates of population change for any of these species. However, the information that is available suggests that the species have experienced substantial population declines within a few generations and some populations are considered to be extirpated from former parts of their range. Remaining populations are also often isolated raising concerns about their viability.

Australia probably represents the last secure populations of green sawfish, dwarf sawfish, speartooth shark and northern river shark species across their global ranges (Stevens et al., 2005; Phillips, 2012). Regional population structuring of largetooth sawfish means Australia probably represents the last secure population in the Indo-West Pacific regional population, and a globally important population centre (Kyne et al. 2013b).

This issues paper has been developed to support the Recovery Plan for Sawfish and River Sharks, available at: <http://www.environment.gov.au/topics/biodiversity/threatened-species-ecological-communities/recovery-plans/recovery-plans-open>. This Issues Paper summarises the biology and ecology of the five species and details immediate and identifiable threats to their long term survival in the wild. The cumulative impact of these threats varies across the range of the species, with some threats having more prominence in certain areas. Fisheries bycatch from commercial fisheries; recreational fishing; Indigenous fishing and illegal unreported and unregulated fishing activity appear to pose the greatest threats based on current knowledge, along with habitat degradation and modification. Secondary threats include collection of animals for display in aquaria and entanglement in marine debris.

2 Introduction

2.1 Purpose

The purpose of this paper is to provide a summary of the biology, population ecology and current threats to largetooth sawfish (*Pristis pristis*) [previously known as the freshwater sawfish, *Pristis microdon*], green sawfish (*Pristis zijsron*); dwarf sawfish (*Pristis clavata*); speartooth shark (*Glyphis glyphis*); and northern river shark (*Glyphis garricki*) in Australian waters, and to make recommendations on the future research necessary to protect these species. This document was created to support the development of the 2014 Recovery Plan for Sawfish and River Sharks.

2.2 Objectives

The objectives of this issues paper are to:

- Collate the most recent scientific information (published and, where appropriate, unpublished) on distribution, abundance and population trends for the three sawfish and two river shark species;
- Identify gaps in our knowledge of the biology and threats to these species and make recommendations on future research; and
- Discuss any natural and anthropogenic factors that are currently limiting the recovery of the species in Australian waters.

2.3 Scope

This document provides a contemporary picture of the biology and ecology of the five species, and identifies threats to their long-term persistence in the wild. This document is not a recovery plan and does not prescribe management actions necessary to address population decreases.

2.4 Sources of Information

This document was prepared following a review of the literature and consultation with key stakeholders including relevant agencies, researchers and interested organisations.

2.5 Recovery Planning Process

2.5.1 Purpose of Recovery Plans

The Australian Government Minister responsible for the environment may make or adopt recovery plans for threatened fauna, threatened flora (other than conservation dependent species) and threatened ecological communities listed under the Commonwealth *Environment Protection and Biodiversity Conservation Act 1999* (EPBC Act).

Recovery plans set out the research and management actions necessary to stop the decline of, and support the recovery of, listed threatened species or threatened ecological

communities. The aim of a recovery plan is to maximise the long term survival in the wild of a threatened species or ecological community.

2.5.2 Objectives of the Recovery Plan for the five listed species

The overarching objective of the 2014 Recovery Plan for Sawfish and River Sharks is to assist the recovery of these species throughout their range in Australian waters by increasing total population size, with a view to:

- Improving the population status leading to the removal of these species from the protected species list of the EPBC Act; and
- Ensuring that anthropogenic activities do not hinder recovery in the near future, or impact on the conservation status of these species in the future.

3 Biology and Ecology

The three sawfish and two river shark species addressed by this recovery plan inhabit the rivers, estuaries and inshore marine habitats of northern Australia. The largetooth sawfish is known to occur in four distinct regional populations globally, while the green sawfish and dwarf sawfish were once known to occur across the Indo-West Pacific region. The two river shark species are only found in Australia and Papua New Guinea.

This section provides background information for each of the five species and includes information on:

- Taxonomy;
- Species description;
- Life history;
- Habitat; and
- Distribution.

3.1 Largetooth Sawfish (*Pristis pristis*)

3.1.1 Taxonomy

Scientific name: *Pristis pristis*; Family Pristidae; Order Pristiformes

Other scientific names used previously: *Pristis microdon*; *Pristis perottetti*; *Pristis zephyreus* (Faria et al. 2013); *Pristiopsis leichhardti* north Queensland (Whitley, 1945).

Common names: Largetooth sawfish, freshwater sawfish, common sawfish, Leichhardt's sawfish, great-tooth sawfish.

There has been some uncertainty about the status of the *P. pristis* group, which was previously recognised as containing three species – including *Pristis microdon*, *Pristis pristis/perottetti* and *Pristis zephyreus*. Recent research by Faria et al. (2013) uses genetics and morphology to suggest these are a single species called *P. pristis*, with the common name being largetooth sawfish. Further, structuring of the population discussed by Faria et al. (2013) shows a distinct Indo-West Pacific regional population that correlates with the range of the former *P. microdon*. As no other species grouped under *P. pristis* occur in the

Indo-West Pacific region, the change in taxonomy does not alter abundance, biology, population trajectory or threats to this species in Australian waters.

This change in taxonomy has been accepted by the Australian Biological Resources Study and the Australian Faunal Directory, and has been reflected in an update to the EPBC Act threatened species list. This issues paper, and the accompanying recovery plan, substitutes all references in the scientific literature to freshwater sawfish (*Pristis microdon*) with largetooth sawfish (*Pristis pristis*) to reflect this taxonomic change.

3.1.2 Species description and growth rates

Appearance: Largetooth sawfish are large, slender sawfish with shark-like bodies; the pectoral fins distinct; the head flattened with a blade-like snout or saw; five pairs of gill slits positioned on ventral surface; pectoral fins broadly triangular with a straight posterior margin; dorsal fins tall and pointed; rostral teeth start near the rostral-base. This species has the following key characteristics (based on Compagno & Last, 1999; Last & Stevens 1994; Faria et al. 2013):

- Rostrum broad and stout, with 14-24 (mainly 20-22), evenly-spaced rostral teeth and each tooth has a groove along its posterior margin. Number of teeth sexually dimorphic with males possessing more teeth than females. Also varying on a regional basis;
- Rostral teeth are relatively evenly spaced, though slightly closer towards the rounded tip of the rostrum;
- Caudal fin with a short but distinct lower lobe (much less than half the length of the upper lobe);
- Pectoral fins distinct from head and broadly triangular;
- First dorsal-fin origin well in advance of the pelvic-fin origins; and
- Usually yellowish to greyish dorsally, white ventrally; posterior margins of the fins are a richer yellowish brown. Thorburn et al. (2004) noted a large degree of colour variation in juvenile individuals collected from riverine environments in northern Australia; the trunks of individuals collected further inland from clear waters were often a deep green, and sometimes almost black. Specimens from Telegraph Pool on the Fitzroy River (Western Australia) were lighter green or yellow/brown.

Maximum size: The largetooth sawfish is the largest fish found in freshwater in Australia. Individuals up to 280 cm total length have been recorded from freshwater environments (Thorburn et al., 2004, 2007a) and a 582 cm female has been recorded from the estuarine habitat of the Mitchell River in the Gulf of Carpentaria (Peverell, 2008). Elsewhere this species is reputed to reach 700 cm (Last and Stevens 1994). Records indicate a maximum size of 656 cm (Compagno & Last, 1999) and maximum weight of 600 kg (Stehman, 1981). Length and mass data from a limited number of animals are shown in Figure 1 (Adapted from Giles et al., 2007).

Pristis pristis in Australian waters

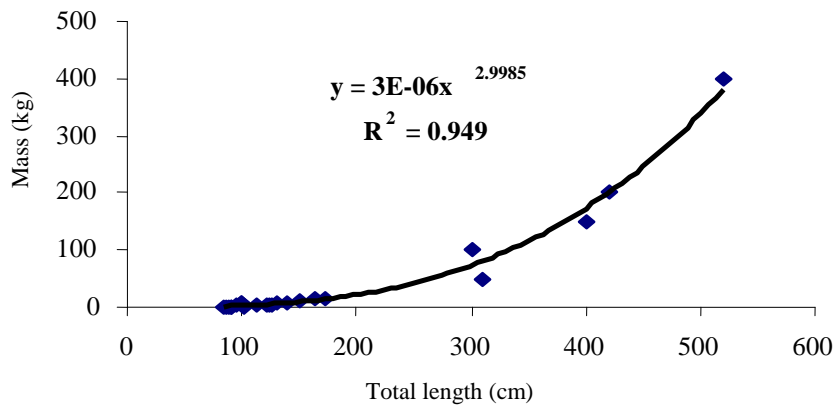


Figure 1. Length-mass relationship for largetooth sawfish in Australian waters.

Growth rates and longevity: Peverell (2008) examined vertebral bands on 41 largetooth sawfish from the Gulf of Carpentaria (Figure 2). The data sets are made up of young of the year animals (20%) followed by animals in the 1-8 year old age classes (78%). In this study, size at birth varied between 72-90cm. The average growth in the first year was 52 cm, reducing to about 17 cm in their fifth year. Longevity was estimated to be about 80 years (Peverell, 2008). Based on the observations of a single pupping female, size and age at maturity was estimated to be 300 cm and eight years. Thorson (1976) corroborates this with evidence from the western Atlantic population, suggesting female sexual maturity is reached at approximately three metres. Male maturity is estimated at between 280 and 300 cm. Growth rates from recaptured largetooth sawfish support these growth estimates (Peverell, 2008; Thorburn et al., 2007a). These growth estimates are considerably faster than those reported by Tanaka (1991) who estimated that they may take 20 years or more to reach maturity based on vertebral ageing.

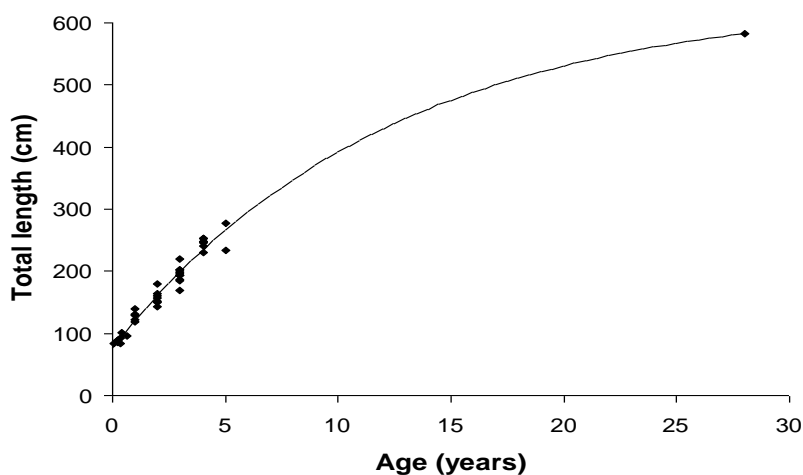


Figure 2. Size and age data for Gulf of Carpentaria largetooth sawfish (n=41). Data are pooled for both sexes and the regression line indicates the von Bertalanffy growth function (Peverell, 2008).

Tag and release programs for largemouth sawfish have been undertaken across northern Australia since 2000. A total of three, 90 and 164 largemouth sawfish were tagged and released in the Northern Territory, Western Australia and Queensland respectively (Thorburn et al., 2007a; Whitty et al., 2008; S. Peverell unpublished data), up until 2008. The fastest growth rate recorded was 48 cm.yr^{-1} at an approximate age of four to five years (Peverell, 2008) and the slowest growth rate was 8 cm.yr^{-1} at an approximate age of five years (David Morgan unpublished data). These data suggest that growth rates can vary. Analysis of captive growth of five specimens ranging in ages of between one and four years ranged between 45 and 101 cm.yr^{-1} (Peverell, 2008). The tag-recapture data and the captive growth rates suggest that the vertebral ageing results of Peverell (2008) provide a more realistic estimate than those of Tanaka (1991).

3.1.3 Life History

Habitat: Largemouth sawfish have been recorded in river and estuarine environments, as well as up to 100km offshore. They inhabit the sandy or muddy bottoms of shallow coastal waters, estuaries and river mouths, as well as the central and upper reaches of freshwater rivers and isolated water holes, with records of largemouth sawfish up to 400 km inland (Giles, 2007). Largemouth sawfish have an ontogenetic shift in habitat utilisation with neonate and juvenile animals primarily occurring in the freshwater reaches of rivers and estuaries and adult animals being found in marine and estuarine environments. This ontogenetic shift in habitat use is supported by tagging and microchemistry research (Peverell, 2008).

In Australia, many of the rivers which largemouth sawfish use as nursery areas fragment into a series of pools in the dry season, reducing the available habitat (Last, 2002). Captures of largemouth sawfish by Thorburn et al., (2003) were made in the main channels, larger tributaries and in backwaters, lower, middle and upper reaches of river systems. Largemouth sawfish were most commonly encountered over finer substrates, such as sand and silt and were usually caught in a relatively deeper section of a river adjacent to a shallower section, such as a sandbar or shallow backwater. Capture sites ranged in depth from 0.7-6.0 m and animals were encountered in both tidal and non-tidal reaches of the river, which generally had low flow rates. There is also some indication they will move into shallow waters when travelling upstream or while hunting prey. Further, there is habitat partitioning for different size classes of largemouth sawfish, with research suggesting that older and larger individuals show a preference for deeper water (Whitty et al., 2008; Whitty et al., 2009).

The generally accepted model of movement and migration of largemouth sawfish in Australian waters is that young are born at the mouths of rivers and in estuaries and then migrate up river where they spend the first several years of life (Thorburn et al., 2004). As they reach maturity they move out of the rivers and into the marine environment.

In the Fitzroy River in Western Australia males leave the river at about 240 cm, and females at about 280cm (Thorburn et al., 2007a). Once individuals enter the marine environment little is known of their movements. Data from a variety of surveys and fisheries indicate that they probably remain in coastal areas, but have been recorded at least 100 km offshore (Giles et al., 2007). More data are needed to understand the movement and habitat requirements of adult largemouth sawfish.

Diet and feeding: Pristids feed on a variety of fish and crustaceans (Thorburn et al., 2007a). The rostra may be used to rake through the substratum or to stun schooling fishes with

sideswipes of the snout (Wueringer et al., 2012). Specimens of largemouth sawfish collected for aquaria from the Gulf of Carpentaria region have had barramundi (*Lates calcarifer*), northern saratoga (*Scleropages jardini*) and jewfish (*Protonibea diacanthus*) scales on their rostrum; the size of scales suggesting they may feed on quite large fish. In the Flinders River, Queensland, they have been observed congregating to eat freshwater prawns (*Macrobrachium rosenbergii*), and have been taken by fishers also targeting freshwater prawns using cast nets (L. Squire, Cairns Marine Aquarium Fish, pers. comm.). Observations of juvenile largemouth sawfish in the Daly River indicate that they actively seek prey species such as mullet (*Mugil cephalus*) and oxeye herring (*Megalops cyprinoides*) in shallow (< 30 cm) water. Guts of largemouth sawfish examined by Peverell (2008) contained prawns (*Penaeus* spp.), eel tailed catfish (Plotosidae), jewel fish (*Nibea squamosa*), mullet (*Rhinomugil nasutus*), threadfin salmon (*Polydactylus macrochir*) and freshwater prawns (*M. rosenbergii*). Stable isotope analysis indicated a broad diet in the Fitzroy River with fork tailed catfish (*Arius graeffei*) and freshwater prawns (*M. rosenbergii*) being important (Thorburn, 2006; Thorburn et al., 2007a).

Reproduction: Little is known about reproduction in largemouth sawfish. As in other pristids, the reproductive mode is aplacental viviparity with lecithotrophic nutrition of the embryos (energy reserves come from the egg).

Litter size is thought to be around 12 pups and pups are about 72-91cm at birth after a five month gestation period (Thorburn 1976; Last & Stevens 1994; Peverell 2008; FSERC, 2009). It is believed that mature largemouth sawfish enter less saline water to give birth and that pupping may occur late in the wet season, at least in the Gulf of Carpentaria (Peverell, 2005). There is also evidence that recruitment levels in Australia may be related to high water levels during the late wet season. Breeding frequency is unknown; however the presence of large yolky ova in the ovary of a female carrying near term pups suggests that in Australia this species may breed every year (Peverell, 2008). The western Atlantic population is thought to breed every second year (Thorson, 1976).

Recent genetic evidence suggests that female largemouth sawfish are philopatric, that is they return to the area where they were born to give birth to their own pups. Males, however, are thought to disperse more widely, perhaps moving between different geographic areas and populations (Phillips, 2012, Faria et al. 2013).

3.1.4 Distribution

Global distribution: Largemouth sawfish are circumtropical, with distinct populations in the eastern Atlantic, western Atlantic, eastern Pacific and Indo-West Pacific. The eastern Atlantic population is believed to be extirpated from the Mediterranean part of its former range and severely depleted in its west African range, which once reached from Morocco to Angola. In the western Atlantic, the population range once extended from the United States of America to Brazil, though this population has also been extirpated from most of its former range and the status of the remaining population is known to be critical, especially in Lake Nicaragua and other Central/South American sites. The eastern Pacific range extends from Mexico to Peru, but little information is available on its distribution. In the Indo-West Pacific, largemouth sawfish were considered to be widely distributed, but are now thought to be rare or extirpated across most of their former range (Last & Stevens, 2009; Phillips, 2012; Kyne et al., 2013).

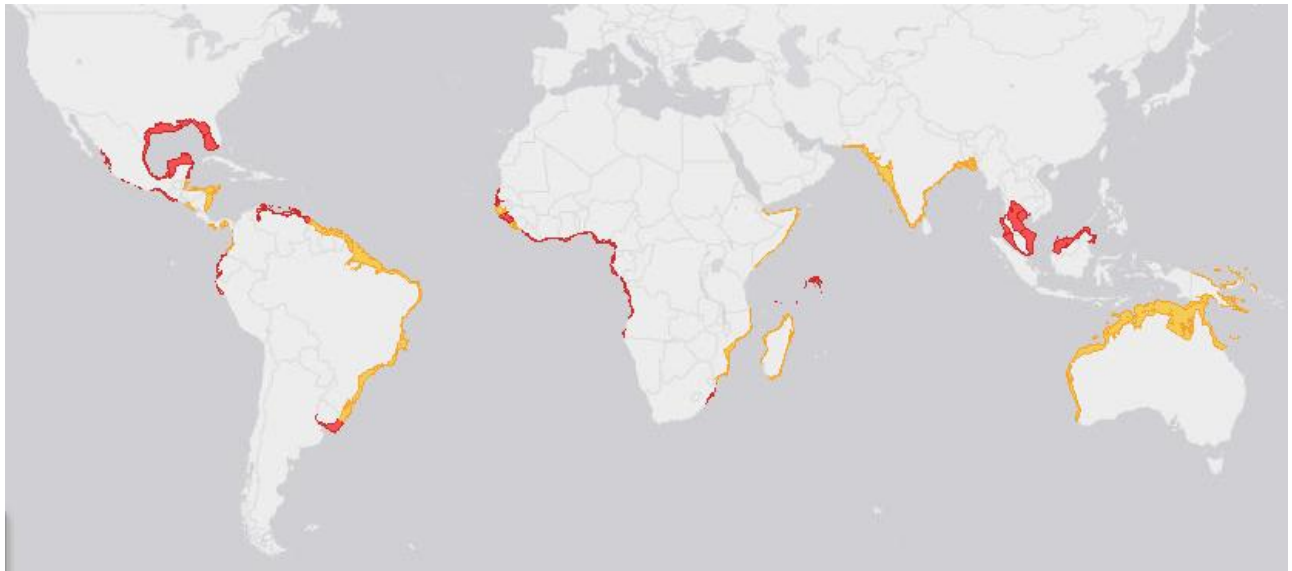


Figure 3. Global distribution of targettooth sawfish (yellow) and areas of possible extinction (red). (IUCN 2013)

Global population overview: Targettooth sawfish have a wide global distribution across the Atlantic, Indo-West Pacific and the east Pacific (Figure 3). However, no quantitative data are available on the global population size of targettooth sawfish. For the Indo-West Pacific regional population, recent surveys of fish landing sites in eastern Indonesia between 2001 and 2005 in which more than 200 days of surveys were undertaken and over 40 000 elasmobranchs recorded, only 2 sawfish, both targettooth, were recorded (White and Dharmadi 2007). These two were caught by tangle net fishers in the Arafura/Banda Sea region in the marine environment.

Relationship between the Australian and the global population: Phylogenetic analyses shows considerable geographic structuring in the global targettooth sawfish population. Maximum parsimony analysis assign the targettooth sawfish into three distinct lineages within the Atlantic, Indo-West Pacific and the east Pacific, with geographic structuring between the east and west Atlantic populations and some structuring between the Indian Ocean and the Australian populations (Faria et al. 2013).

The Australian populations of targettooth sawfish are likely to comprise a high proportion of the Indo-West Pacific population, and a globally important population (Phillips, 2012; Kyne et al. 2013). Further, there is most likely negligible maternal gene flow in targettooth sawfish between south-east Asia and Australia. If there is genetic exchange between south-east Asia and Australia, it is likely the result of male gene flow (Phillips et al., 2011; Faria et al. 2013).

Australian distribution and abundance: Targettooth sawfish have been recorded from rivers, estuaries and marine environments. Juvenile animals have been captured several hundred kilometres inland in places such as Geike Gorge, over 350 km from the sea on the Fitzroy River, and in Margaret River Gorge, over 400 km inland, while adults have been captured up to 100 km offshore (Giles 2007; Morgan et al., 2002, 2004, Thorburn et al., 2003, 2007a; Figure 4).

The majority of records are of juvenile and sub-adult animals (<300 cm) from rivers. They have been recorded in numerous drainage systems in northern Australia in fresh and saline water including the Fitzroy, Durack, Robinson and Ord Rivers (Western Australia), the Adelaide, Victoria, Daly, East and South Alligator, Goomadeer, Roper, McArthur, Wearyan and Robinson Rivers (Northern Territory), and the Gilbert, Mitchell, Normanby, Wenlock, Mission, Embley and Leichhardt Rivers (Queensland).

In Western Australia largetooth sawfish have been recorded from the Fitzroy, Durack, Robinson, May and Ord Rivers. There are coastal records from Cape Keraudren to King Sound (Thorburn et al., 2007a). One large individual was also captured in south west Western Australia, off Cape Naturaliste, however this occurrence is considered an anomaly and outside the normal range for the species (Chidlow, 2007).

In the Northern Territory, largetooth sawfish have been recorded from the Adelaide, Victoria, Daly, East Alligator, South Alligator, Goomadeer, Roper, McArthur, Wearyan and Robinson Rivers. Records for the species occurrence offshore are limited, and the data on these captures are poor. A single record is known from off shore localities in the western Gulf of Carpentaria, in the vicinity of Groote Eylandt (Field et al., 2008).

Records of largetooth sawfish from the east coast of Queensland in the last seven years suggest that they are largely restricted to the rivers draining into Princess Charlotte Bay and their distribution and abundance is patchy and low (Pillans, 2012).

It is unclear whether there are discontinuities in the coastal distribution of largetooth sawfish within their range. It is also unclear whether the lack of records from certain river systems within their area of occupancy reflects a real absence or merely limited sampling effort.

As there are few quantitative species-specific data on largetooth sawfish abundance in Australia, determining long term population trends is difficult. Anecdotal information indicates widespread declines but some evidence suggests that largetooth sawfish populations in some areas may remain healthy (such as the Kimberley region of Western Australia) (Stevens et al., 2005).

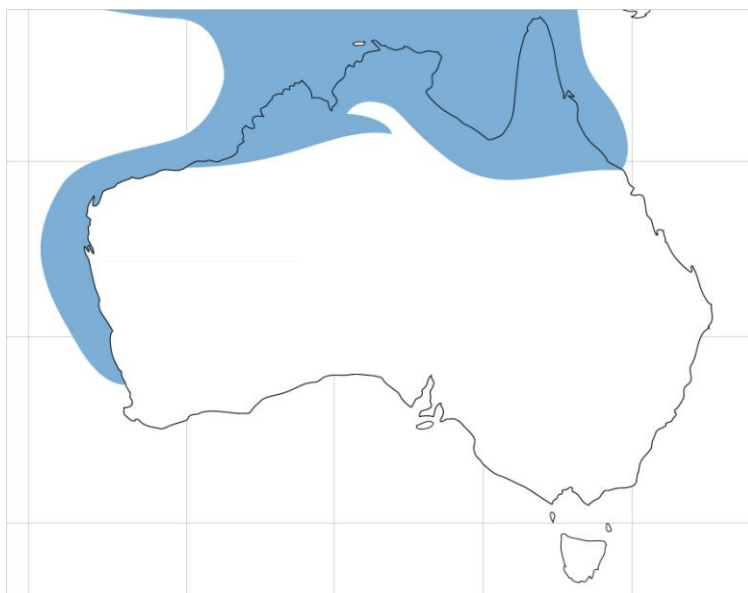


Figure 4. Map showing Australian distribution of largetooth sawfish.

Population structure and genetic diversity: The population structure of largemouth sawfish was assessed by Phillips et al., (2011; 2012) based on data from a portion of the control region of the mitochondrial genome and seven microsatellite loci. Genetic analyses suggests that largemouth sawfish show female philopatry coupled with male biased dispersal in Australian waters. This means that females are thought to return to their natal river systems to give birth and that males disperse between geographic regions to breed. An alternate explanation is that there are breeding aggregations where largemouth sawfish gather, with females returning to their natal areas to pup (Phillips 2012). Regardless, the evidence supports a level of paternal mixing in Australian waters, between populations from the west and north coast regions and the Gulf of Carpentaria region but limited maternal gene flow. The genetic results also suggest that the largemouth sawfish from the east coast may be a distinct matrilineal population(s), but the sample size from that region was small, limiting the ability to draw robust conclusion about the stock structure of the east coast population (Phillips et al., 2011; Phillips, 2012). Substructuring of the largemouth sawfish population in Australia is partially supported by Faria et al. (2013). A total of nineteen separate haplotypes were identified in the global population, including one Indian Ocean haplotype, one Vietnam-New Guinea haplotype and two Australian haplotypes, though this finer scale substructuring of the *P. pristis* group was only partly corroborated by regional variations in rostral teeth.

Phillips (2012) also notes that the presence of male gene flow between assemblages in Australian waters suggests that a decline (e.g. removal) of males in one location could affect the genetic 'health' of assemblages in other locations. For example, the take of males from the Gulf of Carpentaria could have an impact not only on the Gulf of Carpentaria assemblage(s), but also those found along the north and west coasts of Australia. This is coupled with the fact that philopatric behaviour of females tends to increase the risk of extirpation, since once a population has been lost for a generation it would difficult to re-establish naturally (i.e., because females are likely to pup at their natal river) (Phillips 2012).

The levels of mitochondrial DNA (mtDNA) and nuclear DNA (nDNA) diversity in largemouth sawfish in Australian waters are moderate to low and high, respectively, and within the range of values reported for other elasmobranchs including other species of *Pristis* (Phillips et al., 2011; Phillips 2012). The pattern of moderate to low levels of mtDNA and high levels of nDNA diversity (based on heterozygosity) suggests that the Australian population of largemouth sawfish was founded by small numbers of individuals followed by population expansion and growth (Phillips, 2012). However, the signature of the genetic bottleneck/founder effect is stronger than those reported to date for any other elasmobranch (Phillips, 2012). This suggests that in addition to the founder effect, there have been contemporary declines in abundance and the continual pressure has prevented any recovery of alleles (Phillips 2012)..

Important populations: The presence of female philopatry in largemouth sawfish has implications for the conservation of this species because a decline in females at one location would not be replenished by the immigration of females from another location, at least in the short to medium term. This finding suggests that effort should be concentrated on protecting river systems that are known to be important. Some of the more important regions include: King Sound, and the Fitzroy, Durack, Robinson and Ord Rivers in Western Australia, as they contain significant nursery areas and individuals with unique haplotypes; the Van Diemen Gulf drainages and the Daly and Victoria Rivers in the Northern Territory as they represent an important nursery area that is not fished by commercial fisheries; the Gulf of Carpentaria

as it contains unique haplotypes in a number of the rivers; and Princess Charlotte Bay (Queensland) drainages as they also contain individuals with unique haplotypes and the region represents the current eastern extremity of the species (Phillips et al., 2011; Philips, 2012).

3.2 Green Sawfish (*Pristis zijsron*)

3.2.1 Taxonomy

Scientific name: *Pristis zijsron*; Family Pristidae; Order Pristiformes

Other scientific names used previously: *Pristis zysron* is an older spelling (Pogonoski et al., 2002).

Common names: Green sawfish, longcomb sawfish, narrowsnout sawfish

This species is conventionally accepted (e.g. Compagno & Last, 1999; Compagno et al., 2005; Last & Stevens 1994; Faria et al., 2013)).

3.2.2 Species description and growth rates

Appearance: Green sawfish are very large, slender sawfish (Family Pristidae) with shark-like bodies; the pectoral fins distinct; the head flattened with a blade-like snout or rostrum; gill openings positioned on ventral surface; pectoral fins broadly triangular with a straight posterior margin; dorsal fins tall and pointed; and rostral teeth starting near the rostral-base. This species has the following key characteristics (based on Compagno & Last, 1999; Last & Stevens, 2009).

- Rostrum narrow and slender, with 24-28, unevenly-spaced rostral teeth and each tooth has a groove along its posterior margin in adults (smooth in juveniles);
- Interspace between posterior most 2 rostral teeth 2-7 times distance between first 2 rostral teeth;
- Caudal fin lower lobe small (posterior margin of caudal fin almost straight);
- Broad based pectoral fins;
- First dorsal-fin origin slightly posterior to pelvic-fin origins; and
- Greenish brown or olive dorsally, white ventrally.

Maximum size: The maximum length recorded in Australian waters is 730 cm (Compagno & Last 1999).

Growth rates and longevity: Peverell (2008) examined vertebral bands on 18 green sawfish from the Gulf of Carpentaria (Figure 5). In this study average size at birth was 76 cm. The average growth in the first year was 52 cm, and 33 cm in the second year. Longevity was estimated to be 53 years (based on a maximum size of 540 cm, the locally recorded maximum size). Based on the observations of a single post partum female, size and age at maturity was estimated at 380 cm and 9 years.

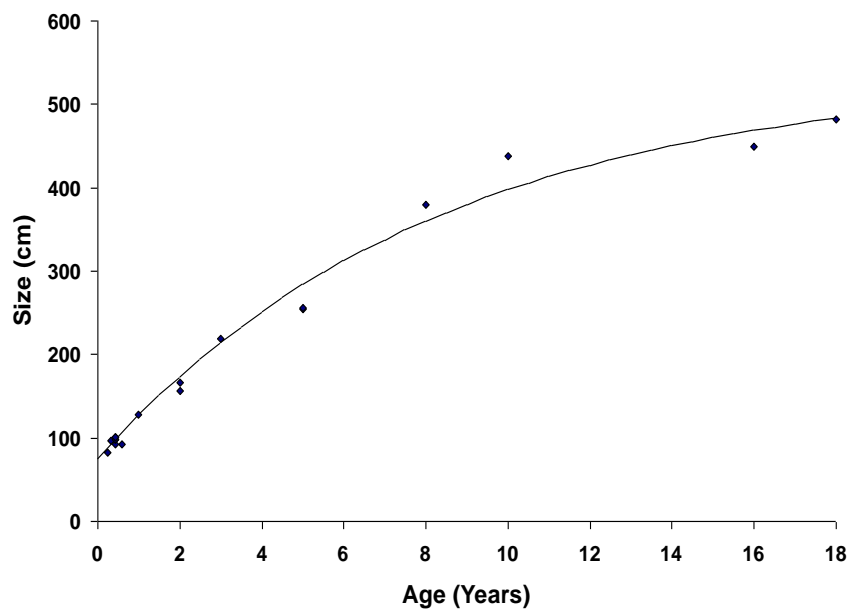


Figure 5. Size and age data for Gulf of Carpentaria sawfish (n=18). Data are pooled for both sexes and the line indicates von Bertalanffy growth function (from Peverell, 2008).

3.2.3 Life History

Habitat: Green sawfish occur in inshore coastal environments including estuaries, river mouths, embayments and along sandy and muddy beaches (Stevens et al., 2005; Thorburn et al., 2004). They have been recorded in very shallow water (less than 1 m) to offshore trawl grounds in over 70 m of water (Stevens et al., 2005). Green sawfish do not, however, utilise fresh water environments.

Despite being found in deep water, evidence suggests that the range of green sawfish is mostly restricted to the inshore coastal fringe, with a strong association to mangroves and adjacent mudflats (Stevens et al., 2008). Peverell and Pillans (2004) tracked a 3.5 m female green sawfish in Port Musgrave, Queensland. Over 27 hours, the sawfish moved 28.7 km and was at all times within 200 m of the shoreline in very shallow water. Stevens et al. (2008) tracked a 256 cm male green sawfish intermittently for approximately 26 hours over a period of four days in 2008. After tagging in Firewood Creek, Cape Keraudren, Western Australia, it moved out with the ebb tide and travelled some 4.5 km across the bay. It then showed more restricted movements, moving towards the shore on the rising tide and away from the shore on the falling tide but remaining in water mostly less than 1.5 m deep.

Diet and feeding: Green sawfish appear to actively pursue schools of baitfish and prawns (Peverell & Pillans, 2004). One green sawfish captured in a prawn trawl targeting banana prawns (*Penaeus merguensis*) in Joseph Bonaparte Gulf had a banana prawn and two 8 cm orangefin ponyfish (*Leiognathus bindus*) in its stomach (Stevens et al., 2005).

Reproduction: Little is known about reproduction in green sawfish. As in other pristids, the reproductive mode is aplacental viviparity with lecithotrophic nutrition of the embryos (energy

reserves come from the egg). Based on other sawfish species, the litter size in green sawfish is estimated to be about 12 (J. D. Stevens, unpublished data).

Peverell (2005) inferred that pupping occurs during, or just before, the wet season. Pupping frequency is unknown but is likely to be every two years given the similarity in size to the Atlantic population of *Pristis pristis* which reproduces biennially (Thorson, 1976).

3.2.4 Distribution

Global distribution: Green sawfish are widely distributed in the northern Indian Ocean to South Africa, and off Indonesia and Australia (Last & Stevens, 1994: Figure 6). No quantitative data are available on global population size of green sawfish.

Global distribution includes: Indonesia; Papua New Guinea; Timor-Leste; Philippines; Malaysia; Cambodia; Thailand; Vietnam; southern China; Taiwan; Myanmar; Sri Lanka; India; Pakistan; Iran; Persian Gulf; Gulf of Oman; the Red Sea; Somalia; Kenya; Mauritius; Mozambique; South Africa (Compagno et al., 2005; Simpfendorfer 2013).



Figure 6. Global distribution of largetooth sawfish (yellow) and areas of possible extinction (red). (IUCN 2013)

Global population overview: Anecdotal information suggests that this species' Indo-West Pacific distribution has been severely impacted by anthropogenic factors in recent years. The available catch records indicate that it is now virtually extinct in most of south-east Asia. Green sawfish were not recorded in fish landing site surveys of eastern Indonesia in a five year Australian Centre for International Agricultural Research (ACIAR) funded shark and ray project, despite over 200 visits to 11 markets from Jakarta to West Papua (CSIRO Marine and Atmospheric Research, unpublished data).

Relationship between the Australian and the global populations: In view of the likely restricted movements of pristids, it is probable that the Australian population can be considered geographically separate from south-east Asian populations (Phillips et al., 2011; Phillips, 2012).

Australian distribution and abundance: Green sawfish are currently distributed from about Mackay (Harry et al., 2011) in Queensland across northern Australian waters to Shark Bay in Western Australia (Figure 7). Individuals have been recorded in inshore coastal environments and estuaries but the species does not penetrate into freshwater. There are also records of green sawfish hundreds of kilometres offshore in relatively deep water (Stevens et al., 2005).

Evidence from gillnet fisheries in the eastern Gulf of Carpentaria indicate that green sawfish are not uniformly distributed within their range (Figure 8; Peverell, 2005). Surveys and captures in commercial fisheries on the Queensland east coast also show a non-uniform distribution (S. Peverell unpublished data). Limited data on short term movement of green sawfish suggest repeated habitat utilisation and utilisation of small core areas (Peverell & Pillans 2004, Stevens et al., 2008).

Their current distribution is significantly less than 40-60 years ago when they were also found as far south as New South Wales, where the species is now considered extinct (NSW, 2007).



Figure 7. Map showing Australian distribution of green sawfish

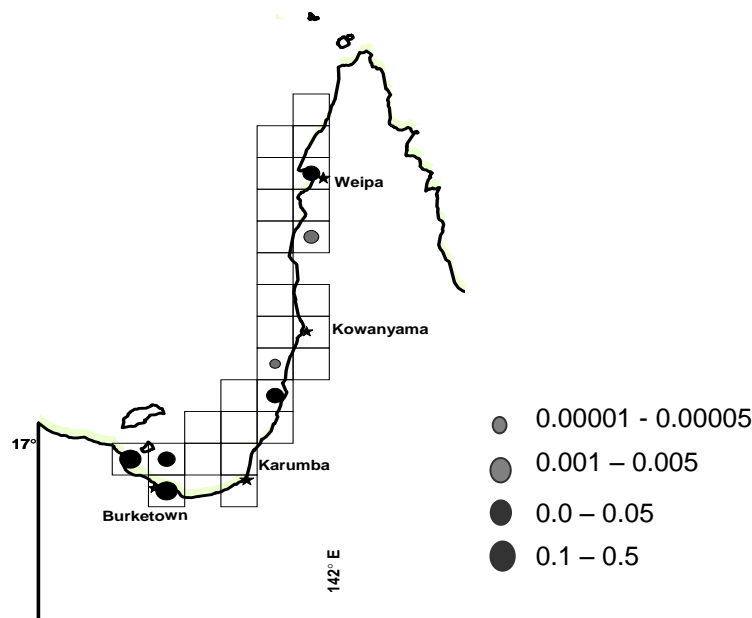


Figure 8. Green sawfish catch per unit effort data for the Queensland Gulf of Carpentaria fisheries

Population structure and genetic diversity: The population structure of green sawfish was assessed based on data from a portion of the control region of the mitochondrial genome and eight microsatellite loci (Phillips et al., 2011; Phillips, 2012). The results indicate that green sawfish are genetically structured in northern Australian waters with at least the assemblages from the west coast, the Gulf of Carpentaria and the east coast being genetically distinct, although precise population boundaries are unclear (Phillips et al., 2011; Phillips, 2012). Genetic analysis also showed evidence of both maternal and paternal philopatry, at least at a regional scale. Unlike the largetooth sawfish, the genetic results did not find evidence of sex-biased dispersal at broad spatial scales in the green sawfish in Australian waters.

Population genetic diversity of green sawfish from northern Australia was also investigated. The levels of mtDNA and nDNA diversity in green sawfish were moderate to low and high, respectively, and within the range of values reported for other elasmobranchs, including other species of *Pristis* (Phillips et al., 2011; Phillips 2012). However, the levels of mtDNA diversity in green sawfish in the Gulf of Carpentaria are reduced compared to those for the west and east coasts and are amongst the lowest reported for elasmobranchs.

The pattern of moderate to low levels of mtDNA and high levels of nDNA diversity suggest that the Australian population of green sawfish was founded by small numbers of individuals followed by population expansion and growth (Phillips, 2012). However, the signature of the genetic bottleneck/founder effect is very pronounced in the green sawfish and is stronger than those reported to date for any other elasmobranch, particularly in the Gulf of Carpentaria. This suggests that in addition to the founder effect, there have been contemporary declines in abundance and the continual pressure has prevented any recovery of genetic diversity, especially in the Gulf of Carpentaria where levels of diversity are reduced and the signature of the founder effect/genetic bottleneck is very strong (Phillips 2012).

Important populations: The genetic analysis suggests that green sawfish form regional assemblages with little maternal or paternal movement between populations. Although the boundaries of these regions remain unknown, the implication is that local extinction will not be replenished in the short to medium term by outside migration. This means that the individual assemblages, or regions, should be identified and managed as independent populations (Phillips 2012).

Some of the more important populations identified for green sawfish include the Cape Keraudren region in northern Western Australia (Stevens et al., 2008). In 2008 several green sawfish were captured in gillnets at Cape Keraudren and large numbers of individuals were seen swimming in shallow water along a beach. This high abundance of animals potentially represents one of the highest densities of green sawfish in Australia. This population is probably the southern stronghold of this species in Western Australia.

The Gulf of Carpentaria assemblage may also warrant special status as the levels of genetic diversity appear to be reduced compared to that for the west coast of Australia (Phillips, 2012) and green sawfish are considered rare in the Gulf (Peverell, 2005, 2008).

Also, any remaining populations on the east coast should be considered “near the edge of the species range” and are important in order to maintain genetic diversity.

3.3 Dwarf Sawfish (*Pristis clavata*)

3.3.1 Taxonomy

Scientific name: *Pristis clavata*; Family Pristidae; Order Pristiformes. This species is conventionally accepted as *Pristis clavata* (dwarf sawfish).

Common names: Dwarf sawfish, Queensland sawfish, broad-billed sawfish.

3.3.2 Species description

Appearance: Dwarf sawfish are small, robust sawfish (Family Pristidae) with shark-like bodies. They are greenish-brown on the dorsal surface and white underneath, with paler fins.

Key characteristics include:

- The pectoral fins are triangular with broad bases and the dorsal fins are tall and pointed, with the first dorsal fin positioned over or just forward of the pelvic fin origin;
- There is no distinct lower lobe of the tail fin and the margin of the tail fin is almost straight (Larson et al., 2006, Last & Stevens, 1994);
- The head is flattened with a broad rostrum bearing 18-22 pairs of evenly spaced, lateral teeth;
- These rostral teeth are slender, with a groove developing along the rear margin of the tooth in adults (Thorburn et al., 2007b); and
- The nostrils are broad with large nasal flaps and are located behind the eyes.

Maximum size: Dwarf sawfish pups are born at 65-81cm and reach a maximum length of at least 310 cm (Last & Stevens 2009).

Growth rates and longevity: The maximum observed age of dwarf sawfish in the Gulf of Carpentaria is 34 years, although it is hypothesised they may live as long as 80 years and could grow to about 5 m (Peverell, 2008). The approximate age of maturity of the species is estimated to be between 8–10 years old (Peverell, 2008).

3.3.3 Life History

Habitat: Dwarf sawfish usually inhabit shallow (2–3 m) coastal waters and estuarine habitats. Unlike the largetooth sawfish, the dwarf sawfish does not utilise any purely freshwater areas (Thorburn et al., 2007b). A study in north-western Western Australia found that estuarine habitats are used as nursery areas, with juveniles remaining in these areas up until three years of age (Thorburn et al., 2007b). Adults are thought to occupy a range within the coastal fringe of only a few square kilometres and show site fidelity. (Stevens et al., 2008). It is unclear how far offshore the adults travel.

Thorburn et al. (2004) captured 19 dwarf sawfish in a survey across northern Australia in 2002. All individuals were caught over fine substrates (mainly silt) in sections of the river channels almost completely devoid of in-stream structure. Excluding one specimen caught in the Victoria River (with a salinity of 9.7), all dwarf sawfish were taken from fully marine water at lower estuarine sites with high turbidity (where measured) and low dissolved oxygen. Capture sites ranged in depth from 0.7 to 7 m and water temperatures were between 25 and 32°C. All were captured on silt/sand flats with low algal and macrophyte cover, low detrital levels and minimal large woody debris.

Between 2005 and 2008 Stevens et al. (2008) actively tracked five dwarf sawfish in shallow coastal waters off Western Australia. All five dwarf sawfish moved the fastest during falling and rising tides with little or no movement at high tide. For approximately 100 minutes on either side of high tide individuals rested in inundated mangrove forests. High tide resting locations for individuals were often less than 100 m from the previous high tide resting site.

Diet and feeding: Little information is available on the diet and feeding behaviour of dwarf sawfish. Generally, pristids feed on a variety of fish and crustaceans (Thorburn et al. 2007b, Peverell 2005). As with other sawfish species, the rostra may be used as a rake through the substratum or to stun schooling fish by sideswiping or threshing the snout while swimming through a school (Larson et al., 2006). The main reported prey species in Western Australia is popeye mullet (*Rhinomugil nasutus*) (Thorburn et al., 2007b).

Reproduction: Little is known about the reproductive cycle in dwarf sawfish. Like other pristids, they reproduce by aplacental viviparity, where eggs develop inside the female's body and young are nourished by large amounts of yolk. Also similar to other sawfish species, the number of young produced by mature females is thought to be around 12 pups per year (Pogonoski et al., 2002; Peverell 2008). Peverell's (2005) observations on reproductive staging and the capture of neonate specimens suggest that pupping occurred through the wet season until the beginning of the dry season in May.

3.3.4 Distribution

Global distribution: Recovery of historical museum records provide verifiable distribution of dwarf sawfish in Papua New Guinea and Indonesian Borneo (Faria et al. 2013). Other

museum records include possible distribution to Réunion, Malaysian Borneo and Java, Indonesia (Faria *et al.* 2013). There are no recent records from outside of Australian waters.

The Australian population of the species is therefore considered likely to comprise the majority or all of the total global population (Thorburn *et al.*, 2004; Stevens *et al.*, 2005).

Australian distribution and abundance: There are no data available on the range and occurrence of dwarf sawfish prior to European settlement in northern Australia. Since European settlement, the species' Australian distribution has been considered to extend north from Cairns around the Cape York Peninsula in Queensland, across northern Australian waters to the Pilbara coast in Western Australia (Last & Stevens, 1994; McAuley *et al.*, 2005; Stevens *et al.*, 2008; Figure 9). A review of specimen records has found no records of the species from the eastern coast of the Cape York Peninsula, although the species has been confirmed from the Pine River on the western coast of Cape York Peninsula (S. Peverell, pers. comm.).

While eastern Queensland populations of dwarf sawfish cannot be confirmed, if the species was historically present in these waters, these populations may now have been extirpated, representing a contraction of range. It is also believed that habitat preference and physical characteristics render it highly likely to undergo future declines (TSSC, 2009).



Figure 9. Australian population of Dwarf sawfish.

Population structure and genetic diversity: An assessment of the population structure of the dwarf sawfish was undertaken based on the analysis of a portion of the control region of the mitochondrial genome and eight microsatellite loci. The results indicate that the dwarf

sawfish is genetically structured in Australian waters, with the populations on the west coast, the north coast and the Gulf of Carpentaria being genetically distinct, although precise population boundaries are unclear (Phillips et al., 2011; Phillips, 2012). Unlike the largetooth sawfish, the genetic results did not find evidence of sex biased dispersal at broad spatial scales in the dwarf sawfish in Australian waters.

The levels of mtDNA and nDNA diversity in dwarf sawfish in Australian waters are low to moderate and high, respectively, and within the range of values reported for other elasmobranchs including other species of *Pristis*. However, the levels of mtDNA diversity in dwarf sawfish in the Gulf of Carpentaria are severely reduced compared to those for the west coast and are amongst the lowest reported for elasmobranchs (Phillips et al., 2011).

The pattern of moderate to low levels of mtDNA and high levels of nDNA diversity suggest that the Australian population of dwarf sawfish was founded by small numbers of individuals followed by population expansion and growth. However, the signature of the genetic bottleneck/founder effect is very pronounced in the dwarf sawfish and is stronger than those reported to date for any other elasmobranchs, particularly in the Gulf of Carpentaria. This suggests that in addition to the founder effect, there may have been contemporary declines in abundance and the continual pressure has prevented any recovery of genetic diversity, especially in the Gulf of Carpentaria where levels of diversity are reduced and the signature of the founder effect/genetic bottleneck is very strong (Phillips, 2012).

Important populations: The genetic analysis suggests that there is negligible maternal or paternal gene flow between regional dwarf sawfish assemblages in Australia. Although the nature and location of the boundaries of these regional populations remain unknown, local population extinctions will not be replenished in the short to medium term by outside migration. This means that the individual assemblages, or regions, should be identified and managed as independent populations.

All populations of dwarf sawfish found in Australian waters should be considered important as the species is likely found only in low numbers and because it is endemic. However, the Gulf of Carpentaria population perhaps warrants special attention considering the low level of genetic diversity and the generally low numbers found in that region (Peverell, 2005, 2008; Phillips, 2012).

3.4 Speartooth Shark (*Glyphis glyphis*)

3.4.1 Taxonomy

Scientific name: *Glyphis glyphis*; Family Carcharhinidae; Order Carcharhiniformes

Common names: Speartooth shark, Bizant river shark, Queensland river shark

Glyphis glyphis (formerly *Glyphis* sp. A) is conventionally accepted and has recently been described by Compagno et al., 2008.

3.4.2 Species description and growth rates

Appearance: *Glyphis glyphis* (F. Carcharhinidae) are medium-sized whaler sharks with the following key characteristics (based on Compagno et al., 2008):

- Precaudal pit a narrow longitudinal or triangular depression (not crescent as in most carcharhinids);
- Second dorsal fin tall, height 67–76% of first dorsal-fin height;
- Snout short, broadly rounded in dorsoventral view, bluntly pointed in lateral view (less flattened than in *Glyphis garricki*);
- No interdorsal or predorsal ridges;
- Upper teeth broadly triangular, blade-like teeth;
- Lower teeth narrow, tall, slender with anterior few teeth with cutting edges confined to spear-like (hastate) tips. Small specimens often without hastate teeth;
- Semi-falcate and with a concave posterior margin;
- Short lower labial furrows, length 3.2–5.0 in nostril width (longer in *Glyphis garricki*);
- More vertebrae than *Glyphis garricki*: total vertebrae 213–222 (vs. 137–151 in *Glyphis garricki*); pre-caudal vertebrae 123–124 (vs. 73–83 in *Glyphis garricki*);
- 'B' ratio (length/width of the penultimate monospondylous vertebrae) 51–60 (vs. 91–97 in *Glyphis garricki*);
- Less teeth than *Glyphis garricki*: tooth counts in upper jaw 26–29 vs. 31–34 in *Glyphis garricki*; lower jaw 27–29 vs. 30–35 in *Glyphis garricki*);
- Slate greyish in colour dorsally and abruptly white below; and
- Waterline (line formed by junction of light and dark tonal areas) extending just below eyes and dark tonal area not visible on head in ventral view (vs. extending well below eye and dark areas visible on head in ventral view in *Glyphis garricki*).

Maximum size: Based on limited data, speartooth sharks are approximately 50-60 cm at birth and are believed to grow to well over 2 m when mature (Stevens et al., 2005; Pillans et al., 2008).

Growth rates and longevity: Estimates of juvenile growth rates based on a single capture (Tanaka, 1991) suggests a growth rate of approximately 19 cm per year (Stevens et al., 2005). There are no estimates of longevity for this species.

3.4.3 Life History

Habitat: Data from over 100 neonate, juvenile and sub-adult individuals indicate that speartooth sharks utilise large tropical river systems as their primary habitat (Stevens et al., 2005). Most captures occur in the tidal and estuarine sections of the rivers, and juveniles up to 175 cm have been captured. Based on physiological and life history similarities with bull sharks (*Carcharhinus leucas*), it is assumed adult speartooth sharks live outside of rivers in a coastal marine environment (Stevens et al., 2005; Pillans et al., 2008).

Speartooth sharks have been recorded in water ranging in salinity from 0.8 to 28ppm. Given the range of salinity the species has been recorded in, it is a euryhaline elasmobranch capable of living in and moving between freshwater and seawater. Although captured animals have not been recorded in full strength seawater (salinity 35), from a physiological perspective, a salinity of 28 is effectively seawater and animals would need to employ similar physiological mechanisms to bull sharks in order to survive (Pillans & Franklin 2004, Pillans et al., 2005, 2006, 2008).

The small amount of data collected on the physical properties of river systems where speartooth sharks have been captured indicates a preference for highly turbid, tidally influenced waters with fine muddy substrate. Data on the short term movement patterns of neonate and juvenile speartooth sharks in the Adelaide (n = 3) and Wenlock River (n = 3) also show that animals have a tidally influenced movement pattern, moving up and downstream with the flood and ebb tides and primarily swim well above the substrate (Pillans et al., 2008).

Diet and feeding: Juveniles eat a range of estuarine and freshwater benthic and benthopelagic teleosts as well as freshwater crustaceans. Dietary items have included arid catfish, nurseryfish, bony bream, freshwater gobies and *Macrobrachium* spp. The diet of adults is unknown (Peverell et al., 2006).

Reproduction: As in other carcharhinids, the reproductive mode is most likely placental viviparity with females giving birth to live young. As with other euryhaline elasmobranchs, pupping most likely occurs at river mouths or within estuaries. There are critical gaps in our understanding of fecundity (number of pups, reproductive periodicity) as well as age at maturity for females.

3.4.4 Distribution

Global distribution: Outside of Australia, speartooth sharks are only known to occur in Papua New Guinea from Port Romilly and the Fly River (Compagno et al., 2008).

Global population overview: No data are available on the global population size.

Relationship between the Australian and the global populations: The relationship between the Australian and global populations is poorly understood. It is currently unknown what percentage of the global populations occur in Australia and whether the Australian and Papua New Guinea populations are genetically linked.

Australian distribution and abundance: Based on available data from immature animals, there are three geographically distinct locations in which the species occurs or did occur (Figure 10). These are: 1) Van Diemen Gulf drainage, Northern Territory, including the Adelaide River, South, East and West Alligator Rivers, and Murganella Creek; 2) Port Musgrave, Queensland, including the Wenlock and Ducie Rivers; and 3) the Princess Charlotte Bay area of Eastern Cape York.

In Western Australia photographs of one specimen captured in the Ord River resembled this species, however, the specimen was released and this record cannot be verified (R. Pillans, personal observation).

Speartooth sharks have been found in all five river systems that flow into the Van Diemen Gulf in the Northern Territory. This region appears to be the centre of abundance for this species and is the only place where speartooth sharks are known to occur in adjacent river systems. Given the proximity of these rivers (less than 115 km apart), it is not unreasonable to assume that, during the wet season, animals would be capable of moving between river systems while remaining in turbid water of reduced salinity.

Speartooth sharks have been confirmed in the Ducie and Wenlock rivers on the western side of Cape York in Queensland. Speartooth sharks have not been recently recorded in nearby

river systems of similar size despite survey effort (Peverell et al., 2006; Blaber et al., 1989, 1995; S. Blaber, pers. comm., 2005).

Speartooth sharks have likely disappeared from river systems in Queensland where they were found previously. Speartooth sharks were previously recorded in the Normanby River (Princess Charlotte Bay, Eastern Cape York) and the Hey and Embley Rivers (Western Cape York) (Peverell et al. 2006) but have not been recorded in those systems in recent times. CSIRO conducted surveys of fish and elasmobranch fauna in the Embley and Hey River between 1986 and 2004 and recorded no *Glyphis* species (Blaber et al., 1989, 1995). Records from the Bizant River in Princess Charlotte Bay were prior to 1986, and no specimens have been recorded from the east coast of Queensland since 1983.

More data are required to determine whether the remaining populations of speartooth sharks are connected. Available data suggests that there are four locations globally where this species currently occurs and that there are large distances between the locations. Additional data on the distribution of speartooth sharks as well as population genetic analyses are needed to determine the degree of fragmentation.

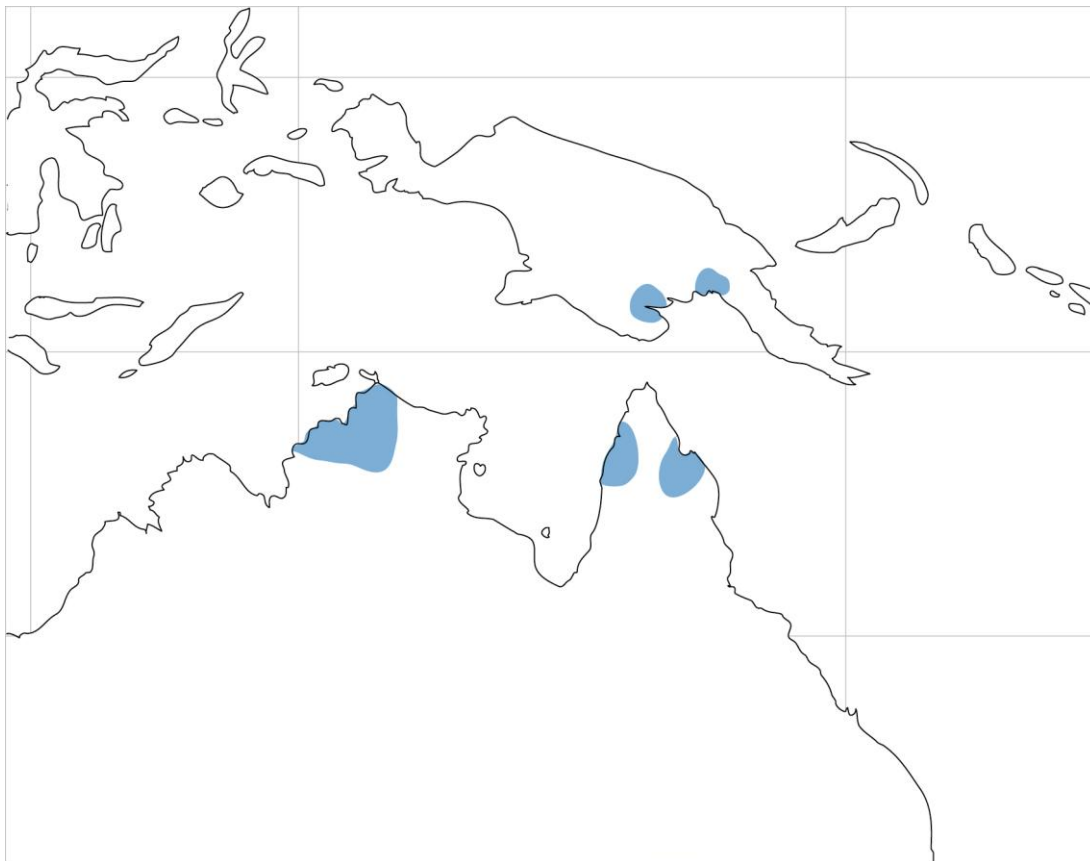


Figure 10. Distribution of speartooth sharks.

Population structure and genetic diversity: Analysis on mtDNA was able to discriminate between speartooth sharks and northern river sharks but did not show any population level differences between the separate speartooth shark populations (Wynen et al., 2008).

Important populations: Given the threatened status of this species, all river systems where speartooth sharks have been recorded are important. Populations on the edge of the species known range include the Wenlock and Ducie River in Queensland and Adelaide River,

Northern Territory. The greatest known concentration of speartooth sharks has been recorded from the Adelaide, West, East and South Alligator Rivers and Murganella Creek, all of which flow into the Van Diemen Gulf.

3.5 Northern River Shark (*Glyphis garricki*)

3.5.1 Taxonomy

Scientific name: *Glyphis garricki* ; Family Carcharhinidae; Order Carcharhiniformes

Common names: Northern river shark, northern speartooth shark

This species is conventionally accepted and has recently been described by Compagno et al. 2008. *Glyphis garricki* is morphologically very similar to *Glyphis glyphis* but they are clearly separated based on dentition, vertebral counts, coloration and subtle morphological characters.

3.5.2 Species description

Appearance: *G. garricki* are medium-sized whaler sharks with the following key characteristics (based on Compagno et al., 2008):

- Precaudal pit a narrow longitudinal or triangular depression (not crescent as in most carcharhinids);
- Second dorsal fin tall, height 57–66% of first dorsal-fin height;
- Snout short, broadly rounded in dorsoventral view, very bluntly pointed, somewhat flattened in lateral view (less flattened and less bluntly pointed in *Glyphis glyphis*);
- No interdorsal or predorsal ridges;
- Upper teeth broadly triangular, blade-like teeth;
- Lower teeth narrow, tall, slender with anterior few teeth with cutting edges confined to spear-like (hastate) tips. Small specimens often without hastate teeth;
- First dorsal fin not falcate and with a nearly straight upper posterior margin;
- Very short lower labial furrows, length 7.1–11.0 in nostril width;
- Fewer vertebrae than *Glyphis glyphis*: total vertebrae 137–151 (vs. 213–222 in *Glyphis glyphis*); pre-caudal vertebrae 73–83 (vs. 123–124 in *Glyphis glyphis*);
- 'B' ratio (length/width of the penultimate monospondylous vertebrae) 91–97 (vs. 51–60 in *Glyphis glyphis*);
- More teeth than *Glyphis glyphis*: tooth counts in upper jaw 31–34 vs. 26–29 in *Glyphis glyphis*; lower jaw 30–35 vs. 27–29 in *Glyphis glyphis*);
- Slate greyish in colour dorsally and abruptly white below;
- Eye very small 0.7-1.1% TL, 23-31 times in head length (Compagno et al., 2008); and
- Waterline (line formed by junction of light and dark tonal areas) extending well below eye and dark areas visible on head in ventral view (vs. extending just below eyes and dark tonal area not visible on head in ventral view).

Maximum size: Maximum recorded size is 251 cm for females and 144 cm for males.

Growth rates: Size at birth for this species is approximately 55 cm based on the few juveniles that have been recorded. A 131 cm northern river shark captured in the Adelaide River by Tanaka (1991) was estimated to be 4 years old according to the number of rings on the vertebral centra.

Mature males have been captured from King Sound and Joseph Bonaparte Gulf and range in size between 136 and 144 cm, while immature males can be up to 119 cm (Stevens et al., 2005; Pillans et al., 2008; Whitty et al., 2008).

A 177 cm female northern river shark was sexually mature and had 9 early stage embryos and associated yolk sacs within the uterus (Stevens et al., 2005).

3.5.3 Life History

Habitat: Northern river sharks utilise rivers, tidal sections of large tropical estuarine systems, macrotidal embayments, as well as inshore and offshore marine habitats (Pillans et al., 2009; Thorburn & Morgan 2004). Adults have been recorded only in marine environments, whereas neonates, juveniles and subadults have been recorded in freshwater, estuarine, and marine environments (Pillans et al., 2009). Data from King Sound, show that animals between 91–142 cm occur in the same habitat (with salinities between 20 and 36.8) (Stevens et al., 2005).

The small amount of data on the physical properties of habitats northern river sharks have been captured in indicates a preference for highly turbid (secchi depth = 3–70 cm), tidally influenced waters with fine muddy substrate (Stevens et al., 2005). However, adults have also been recorded in inshore coastal habitats in Joseph Bonaparte Gulf as well as off the Wessel Islands in 20-25 m of water (Pillans et al, 2009).

This species appears to have a broad salinity tolerance. Given the range of salinity it has been recorded in, it is a euryhaline elasmobranch capable of living in and moving between freshwater and seawater (Stevens et al., 2005). The physiological specialisations that enable it to live in both freshwater and seawater are likely to be similar to that of bull sharks (see Hazon et al., 2003; Pillans & Franklin, 2004; Pillans et al., 2005, 2006, 2008).

Diet and feeding: Northern river sharks feed primarily on bony fish. Stomachs have contained pieces of king salmon (*Polydactylus macrochir*) forktailed catfishes (likely *Arius graeffei*) and an unspecified species of barramundi in specimens captured in King Sound (Thorburn & Morgan, 2004) and in Joseph Bonaparte Gulf (R. Pillans, pers. comm.). Remains of mud crabs (*Scylla serrata*) have also been recorded from specimens captured in King Sound (J. Whitty, pers. comm.). Specimens captured in Joseph Bonaparte Gulf had up to 100 small stingray spines imbedded in the musculature and cartilage of the mouth indicating that stingrays form part of their diet (R. Pillans, pers. comm.).

Reproduction: As in most other carcharhinids, the reproductive mode is placental viviparity with females giving birth to live young. Based on data from one northern river shark, litter size is expected to be around nine. A 251 cm female northern river shark captured during the beginning of the wet season showed evidence of recent pupping, as determined by the distended uteri. This suggests that pupping occurred prior to the wet season (Pillans et al., 2008). The lack of yolky ova in the ovaries of two captured sharks suggests that northern river sharks only breed every second year.

3.5.4 Distribution

Global distribution: Northern river sharks are believed to be endemic to Australia and southern New Guinea. Outside of Australia the species is known from only a few specimens from the Fly River in Papua New Guinea.

Global population overview: The global population size of northern river sharks is unknown (Stevens et al., 2005).

Relationship between the Australian and the global population: The relationship between the Australian and global populations is poorly understood. It is currently unknown what percentage of the global population occurs in Australia and whether the Australian and Papua New Guinea populations are genetically linked.

Australian distribution and abundance: Northern river sharks have been recorded in rivers and estuaries as well as the marine environment within Western Australia and the Northern Territory (Figure 11). In Western Australia, records have come from both the west and east Kimberley, including King Sound, the Ord and King River, West Arm of Cambridge Gulf and also from Joseph Bonaparte Gulf (Thorburn & Morgan, 2004; Stevens et al., 2005; Thorburn, 2006; Field et al., 2008; Pillans et al., 2008a, Whitty et al., 2008; Wynen et al., 2008). All locations are macrotidal, with King Sound experiencing tides >11 m, twice daily.

Within the Northern Territory, northern river sharks have been recorded from the highly turbid lower reaches (salinity between 2 and 10) of the Adelaide River, Daly River and the South and East Alligator Rivers (Larson, 2002; Field et al., 2008.). Northern river sharks have also been recorded off the Wessel Islands in full strength seawater (Pillans et al. 2008).

More data are required to determine whether the distribution of northern river sharks is fragmented. Available data suggests that there are five locations where this species occurs and that there are large distances between the locations. The presence of animals well offshore suggests they undertake movements away from the rivers and estuaries and are therefore likely to move between river systems. The extent to which this occurs, however, and the distances moved are unknown. Additional data on the distribution and movement of northern river sharks as well as population genetic analyses are needed to determine the degree of fragmentation. The high incidence (ca. 50%) of spinal deformities in sharks captured in King Sound may represent a genetic deformity associated with a small gene pool (Thorburn & Morgan, 2004).

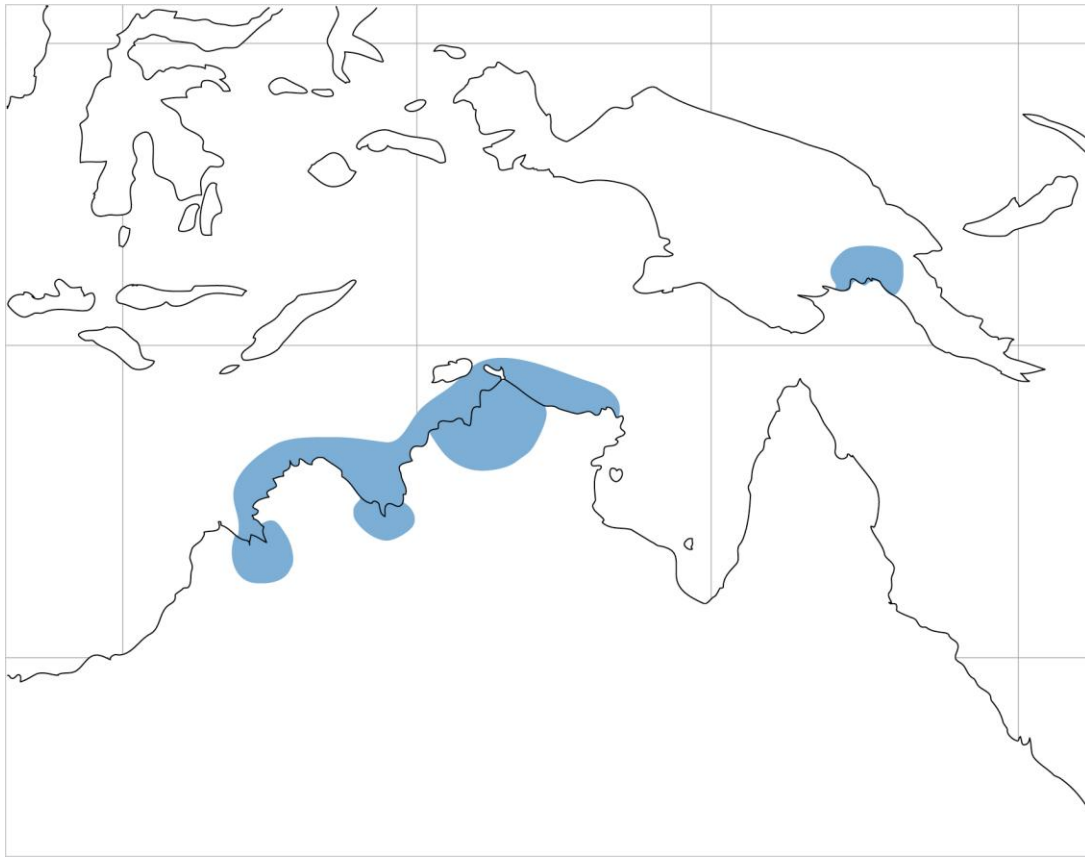


Figure 11. Distribution of northern river sharks.

Important populations: Given the threatened status of this species, all river systems where northern river sharks have been recorded are important. Particularly important populations include King Sound, Joseph Bonaparte Gulf and Van Diemen Gulf.

Population structure and genetic diversity: There is insufficient genetic information to determine population structure in northern river sharks.

4 Conservation

4.1 Australian Government

The five species covered by this issues paper are all listed as either Vulnerable, Endangered, or Critically Endangered under the EPBC Act (Table 1) and by respective state and territory legislation (Table 2). They are all listed in the IUCN Red List (Table 3), as well as the three sawfish species being protected through the Convention on International Trade in Endangered Species of Fauna and Flora (CITES).

Table 1. Species status under the *Environment Protection and Biodiversity Conservation Act 1999*.

<i>Species common name</i>	<i>Scientific name</i>	<i>EPBC Status</i>	<i>Date of listing</i>
*Largetooth sawfish	<i>Pristis pristis</i>	Vulnerable	16 July 2000
Green sawfish	<i>Pristis zijsron</i>	Vulnerable	7 March 2008
Dwarf sawfish	<i>Pristis clavata</i>	Vulnerable	20 October 2009
Speartooth shark	<i>Glyphis glyphis</i>	Critically Endangered	16 October 2001
Northern river shark	<i>Glyphis garricki</i>	Endangered	16 October 2001

*The name change from freshwater sawfish (*Pristis microdon*) to largetooth sawfish (*Pristis pristis*) was formally registered under Commonwealth law on the 3 October 2013.

The largetooth sawfish (then called freshwater sawfish) was transferred from the *Endangered Species Protection Act 1992* to the vulnerable list of the EPBC Act when it came into force in July 2000. For a species to be considered as vulnerable under the *Endangered Species Protection Act 1992*, the Minister must have been satisfied that the species was likely to become endangered within the next 25 years. Recommendations for listing species under the *Endangered Species Protection Act 1992* were made to the Minister by the then Endangered Species Advisory Committee.

The dwarf sawfish was listed as vulnerable under the EPBC Act in 2009. The dwarf sawfish was recommended for listing by the Threatened Species Scientific Committee (TSSC) as it satisfied Criterion 1 (decline in numbers) of the eligibility requirements. Specifically, the TSSC considered that the species may have undergone a range contraction and was highly susceptible to bycatch in inshore gillnet fishing, as well as being subject to other forms of fishing pressure throughout its range. Therefore, the TSSC judged that the species may have undergone a substantial reduction in numbers within the last three generation lengths and was highly susceptible to future declines.

The green sawfish was listed as vulnerable under the EPBC Act in 2008. The green sawfish was recommended for listing by the TSSC as it satisfied Criterion 1 (decline in numbers) of the eligibility requirements. Specifically, the TSSC considered the green sawfish had experienced a decline in numbers and a range reduction of around 30%, with the species

becoming extirpated from NSW and southern Queensland, a region where it was once considered common.

Speartooth sharks and northern river sharks were listed as critically endangered and endangered respectively under the EPBC Act in 2001. These species were recommended for listing by the TSSC as they satisfied criterion 2 (geographic distribution), 3 (population size and decline in numbers or distribution) and 4 (population size) of the eligibility criteria. The current listing of these two species of river sharks as critically endangered or endangered is based on their limited geographic distribution and the estimated total number of mature individuals being either very (northern river sharks) or extremely (speartooth sharks) low and likely to continue to decline.

Full details of the listing advice for all of the species covered by this Recovery Plan can be found at: <http://www.environment.gov.au/cgi-bin/sprat/public/sprat.pl>

4.2 State and Territory Listings

All sawfish and river shark species covered in this issues paper are protected under Australian state and territory legislation. In all state and territory jurisdictions, the taxonomy freshwater sawfish (*Pristis microdon*) is still used. *P. Microdon* is a synonym for *Pristis pristis*, therefore state protection is still complimentary and not in contrast to national legislation.

Table 2. Protected species status in Western Australia, Queensland, New South Wales and the Northern Territory.

Species	Jurisdiction	Status
Freshwater sawfish Green sawfish Dwarf sawfish Speartooth shark <hr/> Northern river shark	Northern Territory	Vulnerable under NT Parks and Wildlife Conservation Act 2000 'no take' species under the NT <i>Fisheries Act 1988</i> and Fisheries Regulations <hr/> Endangered under NT Parks and Wildlife Conservation Act 2000 'no take' species under the NT <i>Fisheries Act 1988</i> and Fisheries Regulation
Freshwater sawfish Green sawfish Dwarf sawfish Speartooth shark <i>(Northern river sharks not present in Queensland waters)</i>	Queensland	Protected ('no take') species under the Queensland <i>Fisheries Act 1994</i> and Fisheries Regulation 2008. All species also listed as 'High priority' under Queensland Back on Track species prioritisation framework.
Freshwater sawfish Green sawfish Dwarf sawfish Speartooth shark Northern river shark	Western Australia	Totally Protected Fish under the <i>Fish Resources Management Act 1994</i> (FRMA).
Green sawfish <i>(other species not present in New South Wales waters)</i>	New South Wales	Presumed Extinct under <i>Fisheries Management Act 1994</i>

4.3 Non-legislative Listing

The species covered under this recovery plan are also listed internationally under the International Union for Conservation of Nature (IUCN) and the Convention on International Trade in Endangered Species of Wild Fauna and Flora (CITES).

Table 3. International status of sawfish and river shark species as determined by the IUCN and CITES.

Species	Agency	Status
Large-tooth sawfish Green sawfish Northern river shark	IUCN	Critically endangered - Red List
Dwarf sawfish Speartooth shark		Endangered – Red List
Green sawfish Dwarf sawfish Freshwater sawfish	CITES	Appendix I

5 Threats to sawfish and river sharks

The principle threats to the five sawfish and river shark species come from:

- Fishing activities including: being caught as by-catch in the commercial and recreational sectors; through Indigenous fishing; and illegal, unreported and unregulated fishing; and
- Habitat degradation and modification.

Other potential threats to species include the collection of animals for display in public aquaria and marine debris.

These factors will be discussed in detail below.

5.1 Fisheries bycatch

Fisheries bycatch includes all non-target species caught while fishing. Sawfish and river shark species are known to be caught as bycatch in some fisheries in Australia. The capture of sawfish and river sharks in Australian territorial waters by Australian fishers is not illegal as long as the fishers did not target the species, made efforts to return the animal to the water alive and reported any captures to the relevant state or territory authority or to the Commonwealth, depending on where the capture took place. It should also be noted that fishers have the right to destroy an animal if it is considered removal of fishing gear or disentanglement would be dangerous. The retention of protected species without a permit is, however, an offence in all Australian waters. Considering the high value of sawfish fins and the collector's appeal of the rostra, there remains a risk that these body parts may still be retained illegally.

While the number of sawfish and river sharks that are injured or die as a result of being caught as bycatch has been estimated for some of the fisheries that interact with these species, sufficient data are not available for all fisheries impacting on Australian stocks. Post release survivorship also remains a largely unknown factor in understanding the full impact of fisheries interactions on sawfish and river sharks. If handled correctly, sawfish species have a good chance of post-release survival from fishing gear. River shark species, however, are thought more likely to suffer mortality from capture. It should also be noted that there is better bycatch information for sawfish species than there is for river shark species. This is probably because sawfish species are more obvious due to their rostra while river shark species are easily misidentified due to their similarities with other whaler species (AFMA, 2009), and because river shark species are restricted to a few geographic locations and less frequently encountered.

Additional domestic fisheries threats come from illegal organised shark finning operations (Putt & Anderson, 2007) and from the deliberate misidentification of river shark species as bull sharks so they can be retained as part of the legitimate shark catch. In addition, fishers may catch sawfish and river shark species using illegal gear types and while fishing in closed or prohibited areas. The extent of the domestic illegal take of sawfish and river shark species is unknown.

5.1.1 Risk assessment of fishing methods

Bycatch by commercial fishing operations has been identified as one of the major pressures on all sawfish and river shark species in Australian waters and historic declines have been attributed to this source (Pillans et al., 2008; Stevens et al., 2005, 2008). The impact of commercial fishing on the five listed species of sawfish and river sharks will vary according to the gear used and how and where it is used. The principle commercial fishing activities that impact on sawfish and river sharks are gillnets and trawl methods, as well as line fishing. It should be noted that sawfish are particularly susceptible to any net fishing methods as their rostrums tend to get caught in the nets where they can be injured before they are released or die due to prolonged periods of capture or stress during handling and release. There is also anecdotal evidence that trawl nets primarily capture adults and are more likely to have a higher impact because they are affecting the breeding population.

There have been a number of risk assessments completed on the various fisheries that operate in northern Australia and on the methods used in those fisheries. Lack (2010) provides a good overview of the different risk assessments undertaken and the conclusions drawn from those assessments, with a focus on the fisheries that operate in Commonwealth waters or that are jointly managed by the Commonwealth and the states and territories. The pressure analysis undertaken as part of the marine bioregional planning process also identified bycatch as 'of concern' for both the North-West region and the North region (DSEWPac, 2012a,b).

Lack (2010) concluded that demersal and semi-demersal trawl methods; set mesh methods; demersal long-line; and pelagic gillnets posed the greatest risk to sawfish populations. However, of the various individual assessments undertaken, only the risk assessment of the Northern Prawn Fishery (NPF), which is predominantly a demersal trawl fishery (AFMA, 2008), identified sawfish as a 'high risk species' based on the rates of capture and the lack of mitigation methods. The risk assessment undertaken for the Gulf of Carpentaria (Lack, 2010; DPIF, 2004) found that semi-demersal trawl methods posed a medium risk and set mesh methods posed a low to moderate risk to sawfish species. The demersal longline and the pelagic gillnet methods were also considered high risk by Lack (2010). Lack considered these methods high risk due largely to the fact that there were no formal assessments of these gear types in northern waters on sawfish populations and hence based her assessment on what was known of bycatch rates from other fisheries that used these methods and by applying the precautionary approach.

When considering these risk assessments there are two important issues to consider. Firstly, the assessments were based on limited information and relatively limited independent observer data, particularly historical information. This lack of high quality data makes it difficult to objectively quantify the risk to sawfish and river shark species by fishing method or by fishery. A consequence of this lack of data is that a conservative assessment is required in order to ensure that populations are not further impacted while reliable and robust data are being obtained.

A second problem when considering risk by fishing method or fishery is that individual assessments may hide the cumulative risk to each species from all of the fisheries operating within their range (Brewer et al., 2007). For example, a species may be assessed as low risk to fishing pressure in several different risk assessments targeting different fisheries but,

combined, the total fishing pressure on the species actually represents a high risk of impacting on the population. A cumulative risk assessment was conducted as part of research into the sustainability of target and bycatch species of Northern Australian sharks and rays (Salini et al., 2007) which found sawfishes were the least sustainable group with all four species having the highest susceptibility ranks due to the fact that they are captured by prawn and fish trawls, gillnets and long lines. Other species that were least likely to be sustainable include the speartooth and northern river sharks. These species were classified as being least likely to be sustainable due to their high susceptibility in target and bycatch gill net and long line fisheries.

5.1.2 Fisheries that interact with sawfish and river sharks.

A number of fisheries have been identified as interacting with sawfish and river shark species. The main fisheries are summarised in Table 4. A brief description of known bycatch rates and related risk will be discussed below for each of these fisheries. The descriptions of bycatch levels in each of the fisheries is mostly limited to publicly available data based on logbook records, observer data and from scientific studies. Caution needs to be exercised when assessing this data as: 1) much of it is patchy and incomplete and, as such, generally does not provide a clear picture of the real fishing pressure on these species, and 2) there is little or no baseline information with which to compare the significance of the total numbers in relation to changes in either population rates over time or trends in catch rates. In addition, species identification is an ongoing problem in many commercial fisheries, as the differences between species within families (e.g., the sawfish family) can often be difficult for non-experts to identify. However, the information that is available does provide an indication of what is going on currently. It should also be noted that there are other fisheries which may interact with the five species but these are not discussed as there is limited or no data available.

Table 4. The main Australian commercial fisheries that are known to interact with sawfish and river shark species.

Fishery	Managed by	Interactions with species	Gear Type
Northern Prawn Fishery	Commonwealth	Dwarf sawfish Largetooth sawfish Green sawfish	Trawl
Gulf of Carpentaria Inshore Finfish Fishery	Queensland	Dwarf sawfish Largetooth sawfish Green sawfish River shark spp.	Set mesh nets
Gulf of Carpentaria Developmental Finfish Trawl Fishery	Queensland	Sawfish spp.	Trawl
East Coast Otter Trawl Fishery	Queensland	Green sawfish	Trawl

East Coast Inshore Finfish Fishery	Queensland	Large tooth sawfish Green sawfish River shark spp.	Net
Offshore Net and Line Fishery	Northern Territory	Large tooth sawfish Green sawfish Dwarf sawfish Speartooth shark	Net and Line
Northern Barramundi Fishery	Northern Territory	Large tooth sawfish Green sawfish Dwarf sawfish Speartooth shark	Net
Kimberly Gillnet and Barramundi Managed Fishery	Western Australia	Large tooth sawfish Green sawfish Dwarf sawfish Speartooth shark	Net
Pilbara Demersal Trawl Fishery	Western Australia	Large tooth sawfish Green sawfish Dwarf sawfish Speartooth shark	Fish Trawl

Northern Prawn Fishery (NPF): The NPF is primarily an otter trawl fishery targeting several prawn species across northern Australia. The NPF has generally high levels of interactions with sawfish species, but most interactions are with the narrow sawfish (*Anoxypristis cuspidata*) which is not listed (AFMA, 2009). However, the NPF does catch largetooth, green and dwarf sawfish. A study into bycatch in the NPF found no trends in catch rates of any of the protected sawfish over time but cautioned that there was not enough data available to produce statistically robust conclusions (AFMA, 2009). In the annual 2010 report on the NPF (based on 2009 data), AFMA reported that there were 417 interactions with sawfish, of which 89 were of green sawfish, 18 were narrow sawfish and 310 were not identified to species level (AFMA, 2010).

The annual reports for the NPF also provide information on observer data, both from crew members and scientific observers. Interestingly, in 2008 (Evans, 2009) it was reported that there were a total of 458 interactions with sawfish recorded in the logbooks compared to 13 records from the crew member observer program and 56 from scientific observers. However, when effort was taken into account, it was found that the scientific observers recorded approximately eight times the level of sawfish bycatch per day as compared to the logbook records, suggesting high levels of under reporting. However in 2009 this situation was reversed, with logbook data indicating 318 interactions and scientific observers only 3, and when effort is considered, the logbook records indicated a catch twice as high as the scientific observers reported (Evans, 2010). This suggests more rigorous reporting might have occurred in the NPF in the 2009 season.

Gulf of Carpentaria Inshore Finfish Fishery: This fishery is primarily a gillnet fishery that targets a number of inshore fish species, including barramundi, king threadfin and grey mackerel. Largetooth, green and dwarf sawfish are recorded as part of the incidental catch in the gillnet fisheries in the Gulf of Carpentaria. The peak catch rates correspond with the

monsoonal wet season, when the salinity levels at the river mouths and along the coastal shoreline are very low (Peverell, 2005). Interactions occur commonly in both the estuarine component of the fishery where both juveniles and adults were recorded, and more rarely in the coastal mackerel/shark components of the fishery (Peverell, 2005). The estuarine component of the fishery catches mostly juvenile individuals up to around 300 cm in length.

A total of 21 interactions were reported through the SOCI logbooks for this fishery in 2009 (DEEDI, 2010a). This included 12 largetooth sawfish and two dwarf sawfish. Of these, all but one largetooth sawfish was reported as being released alive. However, the observer program reported a total of 26 interactions with the five listed species, these included: one dwarf sawfish, 20 largetooth sawfish, one green sawfish and four speartooth sharks. Of those, the sawfish were mostly reported as being returned alive but three of the four speartooth sharks died during capture. There is an obvious discrepancy between the SOCI logbook data and the observer data, which suggests a high degree of under-reporting is taking place in this fishery. The observer data was based on 61 days of observation and included 512 net sets totalling 40.5km and 3250 fishing hours. This represents less than 1% of total fishing effort in the fishery.

Gulf of Carpentaria Developmental Finfish Trawl: This fishery uses trawl methods in offshore waters to target red snapper species. In the 2009 season no SOCI interactions were reported by the operators and, on the one observer trip (9 days) no interactions were observed with any protected species (DEEDI, 2010b). While it is likely that some interactions between this fishery and the five protected species does take place evidence would suggest that interactions are likely to be minimal.

East Coast Otter Trawl Fishery: The east coast trawl fishery primary targets prawn species but also takes scallops, bugs, lobsters, crabs and other non-teleost marine species. This fishery is thought to have only a limited impact on sawfish and river shark species. In 2009 there was only one interaction reported with one of the five species covered in this report - one green sawfish was captured and that individual was released alive (DEEDI, 2010c).

East Coast Inshore Finfish Fishery (ECIFF): The ECIFF is a large fishery targeting a broad range of fish species, including several shark species, along the Queensland east coast. There were seven reported interactions with green sawfish between 2006 and 2009 based on 149 observed trips (Harry et al. 2011), but no reported interactions with sawfish and river shark species in this fishery based on 248 days of observer coverage from 2009 to 2011 (DEEDI, 2011). It is possible that some interactions might have been recorded between 2009 and 2011 had there been observer coverage north of Cooktown and in the Princess Charlotte Bay region. SOCI logbook records for this fishery for 2009 confirm relatively low rates of interactions with the three protected sawfish and two protected river shark species but there were four records of capture of green sawfish, of which two were released injured and the other two died during capture.

Offshore Net and Line Fishery (ONLF): The ONLF primarily targets black-tip sharks (*Carcharhinus tilstoni* and *C. limbatus*), spot-tail sharks (*C. sorrah*) and grey mackerel (*Scomberomorus semifasciatus*) and operates in offshore regions in the Northern Territory, particularly around the Gulf of Carpentaria. This fishery is not thought to pose a significant threat to sawfish and river shark species, although they have been recorded as bycatch. Observer coverage of this fishery over 49 days at sea recorded only 1 capture each of both

the northern river shark and the green sawfish (Field et al., 2008). This low level of observed interactions accords with historical logbook records which indicate 40 green sawfish, two largetooth sawfish and one unspecified river shark species were captured in 2005 and 2006 combined (Field et al., 2008). The 2010 Fishery Status report for the ONLF does not report any interactions with any of the five protected species (NT, 2011).

Northern Territory Barramundi Fishery: The Northern Territory Barramundi Fishery is a relatively small mixed fishery. The primary target species are barramundi (*Lates calcarifer*) and king threadfin (*Polydactylus macrochir*). The shark bycatch composition of this fishery is currently poorly understood but this fishery is known to interact with sawfish and river shark species. Observer data from two independent studies (Salini, 2007; Field et al., 2008) taken over 52 days at sea recorded captures of 17 speartooth sharks, 20 dwarf sawfish and 12 green sawfish. Of the sawfish caught, about half were dead when retrieved.

The 2010 Fishery Status report indicates the Northern Barramundi Fishery has minimal interactions with threatened species as verified by logbooks and their observer program (NT, 2011).

Kimberly Gillnet and Barramundi Managed Fishery (KGBMF) : The KGBMF extends from the Western Australia/Northern Territory border to the top of Eighty Mile Beach. The fishery operates in inshore and estuarine regions and targets fish by the use of gillnets. As a result of where the fishery operates and the fishing methods it uses it does catch some sawfish and river shark species. The 2012 State of the Fishery Report (DoF, 2012) indicates that the catch of these protected species is minimal due to generally low effort but does not quantify the level of catch.

Pilbara Demersal Trawl Fishery (PDTF): The PDTF is situated in the Pilbara region in the north west of Australia. The 2011 status report (DoF, 2011) indicates that green sawfish are caught in this fishery and that, in 2010, there were a total of 19 reported captures, of which all but two were released alive. The 2012 status report (DoF, 2012) indicates that in 2011, there were a total of 6 reported green sawfish captures, of which all but one were released alive.

5.2 Recreational Fishing

The recreational catch of sawfish and river sharks is banned by legislation in Western Australia, Northern Territory and Queensland. Any sawfish captured must be returned to the water unharmed and as quickly as possible. However, recreational fishing continues to grow in popularity and with a growing population, improvements in technology, larger recreational boats, greater access to the coast and an increase in fishing tour operators, more remote areas of northern Australia are now becoming accessible which will increase the pressure on these species as they will be increasingly caught, whether it be as incidental capture or through deliberate capture for highly prized rostrum trophies.

The total recreational catch of sawfish and river sharks is difficult to quantify although rostra mounted on the walls of fishers' homes and in public establishments are testament to a long history of catch in northern Australia, extending into the fairly recent period of history before fishing licences and gear restrictions were introduced. Recent surveys of recreational fishing in Queensland, the Northern Territory and Western Australia have been undertaken, but only the results from Queensland are currently available (Taylor et al., 2012). While quantifying

the general level of take in the recreational sector, the report provides no relevant information regarding the take of protected shark species due to the lack of species level data.

While catch rates of protected sawfish and river shark species in the recreational sector cannot be quantified, it is considered that the use of lures by recreational fishers targeting barramundi poses less of a threat to sawfish than the use of baited lines or nets, although there are anecdotal reports of sawfish being caught on lures. Regardless of which method is more likely to catch sawfish species, survivability is thought to be higher when the animals are caught on lines rather than in nets as they are likely to be released quicker and, therefore, have a better chance of survival. Nevertheless, survival will ultimately depend on a number of factors, including fight time.

Ongoing education campaigns have been implemented in order to help recreational fishers understand the threats to sawfish and river sharks, how to better identify them and ways to avoid capture and/or reduce harm to the animals once captured. The effectiveness of these campaigns has not been assessed.

5.3 Indigenous fishing

The current level of Indigenous fishing of the protected sawfish and river shark species is unknown. However, Indigenous Australians are allowed to take and eat threatened species - including sawfish and river sharks - for personal, domestic or non-commercial communal needs. Sawfish have a significant cultural and spiritual relevance to Indigenous Australians and are also a food source (Peverell, 2005; McDavitt, 2005; Truelove, 2003). The importance of sawfish may vary between Indigenous communities and there also may be cultural restrictions on who can take them, limited to particular times and places. However, considering that these species occur in areas known to be fished by Indigenous Australians, and that they probably occur in low numbers and restricted habitats, they are vulnerable to localised depletion from harvest. This is of particular concern during the dry season, when the habitat of largetooth sawfish will retract into localised pools.

In order to better understand the take of sawfish and river shark species by Indigenous Australians more information needs to be obtained on catch levels and use. A preliminary survey of Indigenous hunters on Groote Eylandt identified that sawfish were occasionally taken, but in small amounts compared to other elasmobranchs (Saunders & Carne, 2010). Another survey of Indigenous fishing in northern Australia (Henry & Lyle, 2003) identified that the Indigenous harvest, while small compared to the general recreational and commercial take, was still significant, particularly in areas with a high portion of Indigenous people. Neither survey, however, identified animals to species level, so it is difficult to make conclusions about the threat posed by Indigenous fishing on the protected sawfish and river shark species. Further surveys across the range of sawfish and river shark species are required to better understand the magnitude of Indigenous fishing and its potential affect on populations.

The study from Groote Eylandt stresses that working closely with the Indigenous rangers and utilising local community mechanisms to collect information are critical to project success. Ranger programs have been established across northern Australia and are well-placed to collect information relating to harvest and monitoring of these species in Indigenous communities. For example, the I-Tracker program, run through the North Australian

Indigenous Land and Sea Management Alliance Limited (NAILSMA), has developed a data collection application using CyberTracker software that Indigenous ranger groups across north Australia use to collect and map information on coastal and marine management activities.

There is also potential to work with Indigenous communities to develop voluntary management arrangements for species of concern. One example of such an arrangement is a Traditional Use of Marine Resource Agreement, a number of which have been developed by Indigenous communities in the Great Barrier Reef Marine Park area in Queensland. Another example is the development of Regional Activity Plans for dugongs and marine turtles through NAILSMA's Dugong and Marine Turtle Project (2005-2009). Through community consultation, the Regional Activity Plans identified Traditional Owners' needs and aspirations, the issues and threats facing dugong and marine turtle management, and the management and research activities that communities wished to undertake. The Dugong and Marine Turtle Knowledge Handbook (2006) brings together scientific and Indigenous knowledge, a copy of which is available at:

http://www.nailsma.org.au/sites/default/files/publications/Dugong%20and%20marine%20turtle%20handbook_0.pdf.

5.4 Illegal, unreported and unregulated fishing (IUU)

The deliberate targeting and retention of any of the five species described in the sawfish and river shark recovery plan is prohibited for any non-Indigenous person in Commonwealth and state waters and in the Northern Territory. Any deliberate targeting of these species therefore, falls into the category of illegal, unreported and unregulated fishing (IUU). Although Australian based vessels can be considered to be part of the IUU trade, the term is usually considered to refer to foreign vessels fishing illegally in Australian waters. The pressure analyses undertaken as part of the bioregional marine planning process identified IUU fishing as 'of concern' for the northern marine bioregion.

The primary IUU threat comes from vessels involved in the shark fin trade illegally fishing in Australian waters. This threat probably relates to sawfish more than river shark species as sawfish fins are amongst the most valuable. Such fishing has been documented (Field et al., 2009) but the magnitude of this threat is unknown. In 2005 it was estimated that the illegal foreign take of sharks in the Gulf of Carpentaria was at least equivalent to the domestic legal catch (Pascoe et al., 2008), although these levels are thought to have since decreased significantly (Lack & Sant, 2008). International vessels fishing on the edge of Australia's Exclusive Economic Zone also pose a threat to Australian populations and there is evidence that such fishing is occurring in the Arafura and Banda Seas (from which two largetooth sawfish specimens were recorded) from boats out of West Papua. Again, the extent of the sawfish take from these operations is unknown.

5.5 Habitat degradation and modification

A wide range of habitat based threats exist for sawfish and river shark species, particularly those species that rely to a greater extent on freshwater and inshore areas, as these are more prone to disturbance. These threats include:

- Coastal development, including canal developments, port expansion, removal of mangroves/sea grass and land clearing;
- Barriers in rivers;
- Water quality and sedimentation;
- Interruptions to migration pathways;
- Water extraction;
- Climate change;
- Developments in remote areas, which may not receive the same scrutiny as in more populated areas;
- Natural events; and
- Bottom trawling, through destruction of benthic habitat.

The impacts of these threats are largely unknown for most species and are likely to be species-specific and localised. It is also likely that the impacts of habitat degradation will be greater on the juveniles of some species because they tend to inhabit fresh water, estuarine and inshore habitats more than the adults. Of the threats mentioned, impacts on natural river flow are of particular concern. Dams and barrages across rivers can impede migration up and down river systems by largetooth sawfish and river shark species and can also cause localised aggregations which may make them more susceptible to natural predation from species such as bull sharks and crocodiles, and also increase their chances of being taken as incidental bycatch, or through deliberate capture, by recreational fishers (Thorburn, et al. 2003, 2004, 2007). In addition, it is thought that pupping in sawfish and river shark species is linked to wet season river flows (Peverell, 2005) and that the number of new recruits captured in the dry season is significantly correlated to higher water levels during the late wet (Whitty et al., 2008). The implications of these findings are that changes to the hydrological regimes of the important rivers may impact these species in ways not yet understood. The long-term impacts of dams and barrages warrant further investigation.

5.6 Collection for Public Aquaria

All three sawfish species are listed on Appendix I of CITES. Previously, however, largetooth sawfish (then known as freshwater sawfish) was listed on Appendix II, with a specific clause which restricted export unless it was to appropriate and acceptable aquaria for primarily conservation purposes. This meant that the capture and international trade of this species for use in aquariums was permitted in Australian waters. As a result, approximately 25 juveniles were live exported from Queensland between 2003 and 2010. However, this practice was stopped in 2011 as a non-detriment finding (DSEWPaC, 2011) found it was not possible to quantify the current rate of anthropogenic induced mortality and the species exhibits life history characteristics that indicate it is highly sensitive to impacts. The non-detriment finding determined it was not possible to conclude with a reasonable level of certainty that any harvest of freshwater sawfish for export purposes would not be detrimental to the survival or recovery of the species. The previous Non Detriment Finding (NDF) recommended a maximum of 10 specimens per year should be authorised for export.

However, the current NDF and the listing on Appendix I of CITES does not preclude collection of sawfish for use in domestic aquaria. The collection of largetooth sawfish for the domestic aquarium trade in Northern Territory waters may only be undertaken by permit from the Director of Fisheries and only for the purpose of supply to public aquariums. Under Western Australian state government legislation, sawfish are a totally protected species that may not be collected or kept for aquarium purposes. Largetooth sawfish are a protected species in Queensland and take of specimens is prohibited without a permit. As of 2013, there are five current general fisheries permits that allow the collecting of sawfish species in Queensland waters. Three of the permits allow the taking of sawfish species for research purposes and the other two allow the taking of sawfish species to supply to aquaria for the purpose of public display or public education. There is no take allowed of any sawfish species in the Great Barrier Reef Marine Park.

There are currently only a small number of sawfish and river shark specimens held in Australian aquariums. As the current rate of capture of sawfish for public aquaria is restricted to domestic establishments only, and the current rate of extraction is very low, it is now unlikely that the collection of live sawfish for the aquarium trade poses a significant threat to sawfish populations in Australian waters.

5.7 Marine debris

Marine debris (or marine litter) is defined as any persistent, manufactured or processed solid material discarded, disposed of or abandoned in the marine and coastal environment (UNEP, 2005). This includes land-sourced plastic garbage (e.g. bags, bottles, ropes, fibreglass, piping, insulation etc.); derelict fishing gear from recreational and commercial fishing activities and ship-sourced, solid non-biodegradable floating materials lost or disposed of at sea (DEWHA, 2009). These definitions can also be extended to riverine environments.

Northern Australia is especially vulnerable to marine debris given the proximity of intensive fishing operations, difficulties in surveillance and enforcement and ocean circulation patterns that are likely to concentrate floating debris before dumping it on coastlines and beaches (Kieessling, 2003). There are a number of known marine debris sources operating in the region, including major shipping routes, significant numbers of commercial and recreational fishing vessels, as well as land-based sources. Marine debris accumulates in relatively high concentrations along the coasts adjacent to urban centres and remote areas of north-western Cape York, Groote Eylandt, north-east Arnhem Land and the far north Great Barrier Reef (DEWHA 2009). Large amounts of fishing net are discarded or lost from the fisheries of the Gulf of Carpentaria and Arafura Sea and end up beach-washed on Queensland and Northern Territory coastlines (Limpus, 2009).

The likelihood of interaction between debris and sawfish and river shark species in northern Australia is largely unknown. Individuals of small coastal sharks, of the same family (Carcharhinidae) as river shark species, have been found with plastic debris collars (Sazima et al., 2002). Carcharhinid sharks have also been recorded in ghost nets off northern Australia, so morphologically, river shark species would also be vulnerable to capture. Because of their saw-like rostrum, sawfish may be susceptible to entanglement in marine debris, particularly discarded nets (Seitz & Poulakis, 2006). Such entanglement can cause serious or fatal injury. In addition, the occurrence of sawfish and river shark species in popular recreational fishing locations may expose them to discarded or lost fishing line, cast

nets or pots, and other debris. For example, Thorburn et al. (2004) reported an interaction between largemouth sawfish and discarded or lost recreational fishing line, causing serious external injury.

Engaging with Indigenous communities is one way of gaining an understanding of the interaction and potential impacts of marine debris on sawfish and river shark species. Indigenous land and sea management groups have been actively engaging in the monitoring of marine debris and associated marine entanglements in partnerships with organisations like GhostNets Australia, Tangaroa Blue and NAILSMA through the I-Tracker program.

6 Summary of Issues and future research directions

The primary threats to sawfish and river shark populations are likely from fishing pressure (commercial, recreational, Indigenous and IUU) and habitat disturbance, particularly to river systems and estuaries. Based on scale, it is likely that commercial fishing would result in the most incidental mortalities of sawfish and river shark species. However, to date, no scientific study has clearly identified a trend in catch rates, which would suggest a population decline in any of the regions being fished. Further, most fisheries have, in recent times, implemented a range of measures aimed at reducing interactions with the species in question - including fisheries closures and better release methods - which may already have resulted in reduced capture and mortality rates. Considering the efforts already undertaken by fisheries agencies, the clear requirement to better manage this sector is better information on rates of capture and population trends in the regions being fished. In addition, efforts to reduce interactions, help fishers better identify species and release captured animals in a manner which increases post-release survival, are required.

The current lack of information and detail on capture rates in the recreational sector makes management difficult. As deliberate capture of these species is illegal, it is very difficult to assess its full extent. However, these species are also caught as legitimate bycatch species by the recreational sector. Considering that intentional captures of these species is likely to remain poorly understood, the best way to reduce the capture and mortality rate by this sector is to work with recreational fishers to reduce non-intentional captures by: limiting interactions through avoiding high risk fishing methods; implementing seasonal and area closures; and helping improve identification, handling and release methods.

Indigenous Australians are allowed to take and eat sawfish and river shark species as part of their native title rights. To date, the level of take has not been established, which makes it difficult to manage as the size of the threat is unknown. Establishing the extent of Indigenous take, therefore, should be a priority for future research as would be establishing any population trends in areas that are heavily utilised by Indigenous groups. Once the full extent of Indigenous take is better understood, then measures should be developed in partnership with Indigenous communities to ensure the harvest is sustainable.

Managing the IUU take of sawfish and river sharks is difficult as there is only a very limited understanding of the components of this threat. It is currently unclear who is taking what, whether the threat is primarily local or from international waters and the scale of the threat. Better management of this threat will firstly require an understanding of its scale but also

require working closely with the enforcement and compliance sections of government agencies at all levels.

The areas where sawfish and river shark species are mostly found are generally remote and relatively undeveloped. However, in some regions developments such as weirs and barrages in rivers and port development/expansion works associated with population centres, heavy industry or agriculture may result in habitat degradation which may impact on movement and survival rates. There are general knowledge gaps about the impacts of alterations to river flow and these need to be better understood. Other developments may have unforeseen consequences and it is important that appropriate development regulation and oversight occurs, which may include investigations into the specific projects and impacts.

The impact of marine debris also poses a significant problem for many areas in northern Australia. However, the scale that this threat poses to sawfish and river shark species is unknown. Management of this threat will require additional information on mortalities associated with marine debris, which may require the development of better ways to identify animals to a species level so that better monitoring and data collection can occur.

When assessing the threats to sawfish and river shark species, one factor stands out. That is that there is very limited information on any of these species, both in the significance of the threats and in the basic biology and population dynamics of the species involved. The combined issues of minimal data and a limited understanding of population pressures on these species makes it difficult to optimally manage the species in regards to balancing the needs and activities of individuals and communities who interact with these species and ensuring that the individual populations of the species are dynamic and robust. To achieve better outcomes for all stakeholders more targeted research will be required, with a particular focus on establishing programs able to assess population demographics at a regional scale and also better identify the pressures which are limiting growth and recovery.

7 References

- AFMA (2008). Residual Risk Assessment of the Level 2 Ecological Risk Assessment species results: Report for the Northern Prawn Fishery, December 2008. Australian Fisheries Management Authority
- AFMA (2009). Assessing the sustainability of the NPF bycatch from annual monitoring data. Australian Fisheries Management Authority Project 2008/826
- AFMA (2010). Annual Report Northern Prawn Fishery 2010. Appendix B. Australian Fisheries Management Authority
- Blaber, S.J.M., Brewer, D.T., and Salini, J.P. (1989). Species composition and biomasses of fishes in different habitats of a tropical northern Australian estuary: Their occurrence in the adjoining sea and estuarine dependence. *Estuarine, Coastal and Shelf Science* 29: 509-531.
- Blaber, S.J. M., Brewer, D.T., and Salini, J. P. (1995). Fish Communities and the Nursery Role of the Shallow Inshore Waters of a Tropical Bay in the Gulf of Carpentaria, Australia. *Estuarine, Coastal and Shelf Science* 40, 177-193.
- Brewer, D.T., Lynne, V, Skewes, T.D. and Rothlisberg, P. (2007). Trophic systems of the North-west Marine Region. Report to the Department of the Environment, Water, Heritage and the Arts
- Chidlow, J. A. (2007). First record of the freshwater sawfish, *Pristis microdon*, from south western Australian waters. *Records of the Western Australian Museum* 23: 307-308
- Compagno, L.J.V and Cook, S.F. (1995). The exploitation and conservation of freshwater elasmobranchs: status of taxa and prospects for the future. In: The biology of freshwater elasmobranchs. A symposium to honour Thomas B. Thorson. Eds: M Oetinger and GD Zorzi. *Journal of Aquaculture and Aquatic Sciences* 7: 62-90.
- Compagno, L. J. V., Dando, M., Fowler, S. (2005). A Field Guide to the Sharks of the World. Harper Collins Publishing Ltd., London, 368 pp.
- Compagno, L.J.V and Last, P.R. (1999). Family Pristidae: Sawfish. In: Carpenter, K. E and Niem, V. (eds). *FAO Identification guide for fishery purposes. The Living Marine Resources of the Western Central Pacific*. Food and Agriculture Organization of the United Nations, Rome
- Compagno, L. J. V., White, W. T, Last, P. R. (2008). *Glyphis Garrick* sp. nov., a new species of river shark (Carcharhiniformes: Carcharhinidae) from northern Australia and Papua New Guinea, with a redescription of *Glyphis glyphis* (Müller and Henle, 1839), pp. 203–225. In: Last PR, White WT and Pogonoski JJ (eds). *Descriptions of New Australian Chondrichthyans*. CSIRO Marine and Atmospheric Research Paper 022. 358 pp.
- Cook, S. F., Compagno, L. J. V., Last, P. R. (2006). *Pristis clavata*: 2007 IUCN Red List of threatened Species. [Online]. www.iucnredlist.org. [Accessed: 25-Sep-2008].

- DEEDI (2010a). Annual status report 2010 Gulf of Carpentaria Inshore Fin Fish Fishery. Queensland Department of Employment, Economic Development and Innovation.
- DEEDI (2010b). Annual status report 2010 Gulf of Carpentaria Developmental Fin Fish Trawl Fishery. Queensland Department of Employment, Economic Development and Innovation.
- DEEDI (2010c). Annual status report 2010 East Coast Otter Trawl Fishery. Queensland Department of Employment, Economic Development and Innovation.
- DEEDI (2011). Fishery observation in the East Coast Inshore Fin Fish Fishery. Queensland Department of Employment, Economic Development and Innovation.
- DEWHA (2009). Threat Abatement Plan for the Impacts of Marine Debris on Vertebrate Marine Life. Department of the Environment, Water, Heritage and the Arts, Canberra.
- DoF (2011). State of the Fisheries and Aquatic Resources Report 2010/2011. Department of Fisheries, Western Australia.
- DoF (2012). State of the Fisheries and Aquatic Resources Report 2010/2011. Department of Fisheries, Western Australia.
- DPIF (2004). Ecological Assessment of the Gulf of Carpentaria Developmental Finfish Trawl Fishery. Compiled by Anthony Roelofs and Jason Stapley.
- DSEWPaC (2011). Non detriment finding for the Freshwater Sawfish, *Pristis microdon*. Department of Sustainability, Environment, Water, Population and Communities, Canberra.
- DSEWPaC (2012a). Species group report card - sharks and sawfishes. Supporting the marine bioregional plan for the North-west Marine Region. The Department of Sustainability, Environment, Water, Population and Communities.
<http://www.environment.gov.au/coasts/mbp/publications/north-west/bioregional-profile.html>
- DSEWPaC (2012b). Species group report card - sawfishes and river sharks. Supporting the marine bioregional plan for the North Marine Region. The Department of Sustainability, Environment, Water, Population and Communities.
<http://www.environment.gov.au/coasts/marineplans/north/index.html>
- Evans, S. K. (2009). Northern Prawn Fishery Data Summary 2008. NPF Industry Pty Ltd, Australia.
- Evans, S. K. (2010). Northern Prawn Fishery Data Summary 2009. NPF Industry Pty Ltd, Australia.
- Faria, V. V. (2007). Taxonomic review, phylogeny, and geographical population structure of the sawfishes (Chondrichthyes, Pristiformes). Ph.D. Dissertation, Iowa State University, Ames, IA

- Faria, V.V., McDavitt, M. T., Charvet, P., Wiley, T. R., Simpfendorfer, C. A., Naylor, G. J. P. (2013). Species delineation and global population structure of Critically Endangered sawfishes (Pristidae). *Zoological Journal of the Linnean Society*, 2013, 167 136-164.
- FSERC, (2009). Report of the Freshwater sawfish *Pristis microdon* scientific workshop. Report to Australian Government, Department of the Environment, Water, Heritage and the Arts.
- Field, I. C., Charters, R., Buckworth, R. C., Meekan, M. G., Bradshaw, C. J. A. (2008). Distribution and abundance of Glyphis and sawfishes in northern Australia and their potential interactions with commercial fisheries. Report to Australian Government, Department of the Environment, Water, Heritage and the Arts. Charles Darwin University, Darwin, Australia.
- Field, I. C., Meekan, M. G., Buckworth R. C., Bradshaw, C. J. A. (2009). Protein mining the world's oceans: Australasia as an example of illegal expansion-and-displacement fishing. *Fish and Fisheries* 10: 323-328.
- FishBase (2002). FAO <http://www.fishbase.org>
- Giles, J., Pillans, R., Miller, M., Salini, J. (2007). Sawfish catch data in northern Australia: a desktop study. Report produced for FRDC Project 2002/064 Northern Australian Sharks and Rays: the sustainability of target and bycatch fisheries, phase 2.
- Harry, A. V., Tobin, A. J., Simpfendorfer, C. A., Welch, D. J., Mapleston, A., White, J., Williams, A. J., Stapley, J. (2011). Assessing and mitigating the risk to tropical Carcharhiniform sharks posed by inshore fisheries: a case study in the Great Barrier Reef World Heritage Area. *Marine and Freshwater Research*
- Hazon, N., Wells, A., Pillans, R. D., Good, J. P., Anderson, W. G., Franklin, C. E. (2003). Urea based osmoregulation and endocrine control in elasmobranch fish with special reference to euryhalinity. *Comp. Biochemistry and Physiology* 136B: 685-700.
- Henry, G., Lyle, J. (2003). *The National Recreational and Indigenous Fishing Survey*, Fisheries Research and Development Corporation, Natural Heritage Trust and NSW Fisheries, ACT.
- Heupel, M. R., Simpfendorfer, C. A. (2002). Estimation of survival and mortality of juvenile blacktip sharks, *Carcharhinus limbatus*, within a nursery area based on telemetry data. *Can J Fish Aquat Sci* 59:624–632
- Kiessling, I. (2003). Finding Solutions: Derelict Fishing Gear and Other Marine Debris in Northern Australia. National Oceans Office, Hobart.
- Kyne, P.M., Carlson, J. & Smith, K. 2013. *Pristis pristis*. In: IUCN 2013. IUCN Red List of Threatened Species. Version 2013.1. <www.iucnredlist.org>. Downloaded on **16 July 2013**.
- Lack, M. (2010). Assessment of risks that commercial fishing methods may pose to conservation values identified in the Areas for Further Assessment of the North and

North-west Marine Regions. Report by Mary Lack for the Department of the Environment, Water, Heritage and the Arts.

- Lack, M., & Sant, G. (2008). Illegal, unreported and unregulated shark catch: a review of current knowledge and action, Australian Government Department of the Environment, Water, Heritage and the Arts, and TRAFFIC, Canberra.
- Larson, H. K. (2002). Report to Park Australia on Estuarine Fish Monitoring of Kakadu National Park, Northern Australia, Australia, Museum and Art Gallery of the Northern Territory, Darwin, 51 pp.
- Larson, H., Woinarski, J., and Stirrat, S. (2006). Threatened species of the Northern Territory: Dwarf sawfish *Pristis clavata*. [Online]. Darwin, Northern Territory: Northern Territory Department of Natural Resources, Environment, the Arts and Sport.
- Last, P. R. (2002). Freshwater and estuarine elasmobranchs of Australian. Elasmobranch Biodiversity Conservation and Management. Proceedings of the International seminar and workshop, Sabah, Malaysia, July 1997. Occasional Paper IUCN Species Survival Commission. Eds Fowler SL, Reed TM and Dipper FA. Pp 185 – 192.
- Last, P. R., and Stevens, J. D. (1994). Sharks and rays of Australia. C.S.I.R.O. Australia, 513 pp + 84 colour plates.
- Last, P., & Stevens, J. (2009). Sharks and Rays of Australia. Second Edition. Commonwealth Scientific and Industrial Research Organisation (CSIRO).
- Limpus, C.J. (2009). A Biological Review of Australian Marine Turtles. Environmental Protection Agency, Queensland Government.
- Lowe, C. G. (2002). Bioenergetics of free-ranging juvenile scalloped hammerhead sharks (*Sphyrna lewini*) in 66 Environ Biol Fish (2006) 76:47–67 123 Kane'ohe Bay, O'ahu, HI. J Exp Mar Biol Ecol 278:141–156
- McAuley, R., Lenanton, R., Chidlow, J., Allison, R., and Heist, E. (2005). Biology and Stock Assessment of the Thickskin (Sandbar) Shark, *Carcharhinus plumbeus*, in Western Australia and Further Refinement of the Dusky Shark, *Carcharhinus obscurus*, Stock Assessment. Final Report to the Fisheries Research and Development Corporation for FRDC project no. 2000/134.
- McDavitt, M. (2005). The cultural significance of sharks and rays in Aboriginal societies across Australia's top end. Marine Education Society of Australasia website (Online). Available from: http://www.mesa.edu.au/seaweeek2005/pdf_senior/is08.pdf. [Accessed: 25-Sep-2008].
- Morgan, D., Allen, M., Bedford, P., and Horstman, M. (2002). Inland fish fauna of the Fitzroy River Western Australia, including the Bunuba, Gooniyandi, Ngarinyin, Nyikina and Walmajarri Aboriginal names. Report to the Natural Heritage Trust.

- Morgan, D., Allen, M., Bedford, P., and Horstman, M. (2004). Fish fauna of the Fitzroy River Western Australia - including the Banuba, Gooniyandi, Ngarinyin, Nyikina and Walmajarri Aboriginal names. *Records of the Western Australian Museum* 22: 147 - 161.
- NSW DPI (2007). Species presumed extinct in NSW - Green Sawfish. NSW Department of Primary Industries. www.dpi.nsw.gov/primefacts.
- Northern Territory Government (2011). Fishery Status Reports 2010. Northern Territory Government Department of Resources. Fishery Report No. 106.
- Pascoe, S., Okey, T. A., Griffiths, S. (2008), Economic and ecosystem impacts of illegal, unregulated and unreported (IUU) fishing in Northern Australia. *Australian Journal of Agricultural and Resource Economics*, 52: 433–452.
- Peverell, S., C. (2005). Distribution of sawfishes (Pristidae) in the Queensland Gulf of Carpentaria, Australia, with notes on sawfish ecology. *Environmental Biology of Fishes* 73 (4): 391-402.
- Peverell, S. C. (2008). Sawfish (Pristidae) of the Gulf of Carpentaria, Queensland, Australia. MSc Thesis James Cook University.
- Peverell, S. C., McPherson, G. R., Garrett, R. N., Gribble, N. A. (2006). New records of the river shark *Glyphis* (Carcharhinidae) reported from Cape York Peninsula, northern Australia. *Zootaxa* 1233: 53–68
- Peverell, S. C., Pillans, R. D. (2004). Determining feasibility of acoustic tag attachment and documenting short-term movement in *Pristis zijsron* Bleeker, 1851. Report for the National Oceans Office, 18 pp.
- Phillips, N. (2012). Conservation genetics of *Pristis* sawfishes in Australian waters. Doctor of Philosophy Thesis. Murdoch University. 2012.
- Phillips, N. M., Chaplin, J. A., Morgan, D. L., Peverell, S. C. (2011). Population genetic structure and genetic diversity of three critically endangered *Pristis* sawfishes in Australian waters. *Marine Biology* 158: 903-915
- Pillans, R. D. (2012). Freshwater Sawfish. In: Keith McDonald, Andrew Dennis, Peter Kyne, Stephen Debus *Queensland's Threatened Animals*. CSIRO Publishing. 472.
- Pillans, R. D., Anderson, W. G., Good, J. D., Hyodo, S., Takei, Y., Hazon, N., Franklin, C. E. (2006). Plasma and erythrocyte solute properties of juvenile bull sharks, *Carcharhinus leucas*, acutely exposed to increasing environmental salinity. *Journal of Experimental Marine Biology and Ecology* 331:145 – 157
- Pillans, R. D., Franklin, C. F. (2004). Plasma osmolyte concentrations and rectal gland mass of bull sharks, *Carcharhinus leucas*, captured along a salinity gradient. *Comparative Biochemistry and Physiology* 138A, 363-371.
- Pillans, R. D., Good, J. P., Anderson, W. G., Hazon, N., Franklin, C. F. (2005). Freshwater to seawater acclimation of juvenile bull sharks (*Carcharhinus leucas*): plasma

- osmolytes and Na⁺/K⁺-ATPase activity in gill, rectal gland, kidney and intestine. *Journal of Comparative Physiology B* 175: 37-44.
- Pillans, R. D., Good, J. P., Anderson, W. G., Hazon, N., Franklin, C. E. (2008b). Rectal gland morphology of freshwater and seawater acclimated bull sharks *Carcharhinus leucas*. *Journal of Fish Biology* 72: 1559 – 1571
- Pillans, R. D., Stevens, J. D., Kyne, P. M., & Salini, J (2009). Observations on the distribution, biology, short-term movements and habitat requirements of river sharks *Glyphis* spp. in northern Australia', *Endangered Species Research*, vol. 10, pp. 321–332.
- Pillans, R. D., Stevens, J. D., Peverell, S., Edgar, S. (2008a). Spatial distribution and habitat utilisation of the speartooth shark *Glyphis glyphis* in relation to fishing in Northern Australia. Final report to Department of the Environment, Water, Heritage and the Arts. May 2008.
- Pogonoski, J. J., Pollard, D. A., Paxton, J. R. (2002). Conservation Overview and Action Plan for Australian Threatened and Potentially Threatened Marine and Estuarine Fishes. Natural Heritage Trust, Environment Australia, 375 pp.
- Putt, J., Anderson, K. (2007). A national study of crime in the Australian fishing industry. Research & public policy series no. 76. Canberra: Australian Institute of Criminology. Rose C and McLoughlin K (2001). Review of Shark Finning in Australian Fisheries. Final report to the Fisheries Resources Research Fund. Bureau of Rural Sciences. 166 pp.
- Salini, J., McAuley, R., Blaber, S., Buckworth, R., Chidlow, J., Gribble, N., Ovenden, J., Peverell, S., Pillans, R., Stevens, J., Stobutzki, I., Tarca, C., Walker, C. (2007). Northern Australian Sharks and Rays: the sustainability of target and bycatch species, Phase 2. Report to Fisheries Research and Development Cooperation for FRDC project no. 2002/064.
- Saunders, T., Carne, R. (2010). A survey of customary fishing of sharks and stingrays. Groote Eylandt. Northern Territory Government, Australia. Fisheries Report 105
- Sazima, I., Gadig, O.B.F., Namora, R.C. and Motta, F.S. (2002). Plastic debris collars on juvenile carcharhinid sharks (*Rhizoprionodon lalandii*) in southwest Atlantic. *Marine Pollution Bulletin* 44: 1147–1149.
- Seitz, J.C., Poulakis, G.R. (2006). Anthropogenic effects on the smalltooth sawfish (*Pristis pectinata*) in the United States. *Marine Pollution Bulletin* 52: 1533–1540.
- Simpfendorfer, C. A. (2000). Predicting population recovery rates for endangered western Atlantic sawfishes using demographic analysis. *Environmental Biology of Fishes* 58: 371-377
- Simpfendorfer, C. (2013). *Pristis zijsron*. In: IUCN 2013. IUCN Red List of Threatened Species. Version 2013.1. <www.iucnredlist.org>. Downloaded on **18 July 2013**

- Stehman, M. (1981). Pristidae. In Fischer W, Bianchi G. and Scott WB (eds). FAO Species Identification Sheets for Fishery Purposes Eastern Central Atlantic.
- Stevens, J. D., McAuley, R. B., Simpfendorfer, C. A., Pillans, R. D. (2008). Spatial distribution and habitat utilisation of sawfish (*Pristis* spp) in relation to fishing in northern Australia. A report to the Department of the Environment, Water, Heritage and the Arts. [Online]. CSIRO and Western Australia Department of Fisheries. Available from: <http://www.environment.gov.au/coasts/publications/pubs/sawfish-report.pdf>.
- Stevens, J.D., Pillans, R. D., Salini, J. P. (2005). Conservation assessment of *Glyphis glyphis* (spartooth shark), *Glyphis garricki* (northern river shark), *Pristis microdon* (freshwater sawfish) and *Pristis zijsron* (green sawfish). Report to Department of Environment and Heritage, Canberra, Australia.
- Tanaka, S. (1991). Age estimation of freshwater sawfish and sharks in northern Australia and Papua New Guinea. The University Museum, University of Tokyo, Nature and Culture No.3: 71-82.
- Taniuchi, T., Shimizu, M., Sano, M., Baba, O., Last, P. R. (1991). Descriptions of freshwater elasmobranchs collected from three rivers in northern Australia. In: Shimizu M and Taniuchi T (eds) Studies on elasmobranchs collected from seven river systems in northern Australia and Papua New Guinea. The University Museum, University of Tokyo, Nature and Culture 3: 11–26.
- Taylor, S., Webley, J., McInnes, K. (2012). 2010 Statewide Recreational Fishing Survey. State of Queensland, Department of Agriculture, Fisheries, Forestry.
- Thorburn, D. C. (2006). Biology, ecology and trophic interactions of elasmobranchs and other fishes in riverine waters of northern Australia. PhD Thesis, Murdoch University, Perth, Western Australia.
- Thorburn, D.C & Morgan D.L (2004). The northern river shark *Glyphis* sp. C (Carcharhinidae) discovered in Western Australia. *Zootaxa* 685: 1–8. Available at: www.mapress.com/zootaxa/2004f/zt00685.pdf
- Thorburn, D., Morgan, D., Gill, H., Johnson, M., Wallace-Smith, H., Vigilante, T., Goring, A., Croft, I., Fenton, J. (2004). Biology and cultural significance of the freshwater sawfish (*Pristis microdon*) in the Fitzroy River Kimberley, Western Australia. Report to Threatened Species Network
- Thorburn, D. C., Morgan, D. L., Rowland, A. J., Gill, H. S. (2007a). Freshwater sawfish *Pristis microdon* Latham, 1794 (Chondrichthyes: Pristidae) in the Kimberley region of Western Australia. *Zootaxa*. 1471:27-41.
- Thorburn, D. C., Morgan, D. L., Rowland, A. J., Gill, H. S., Paling, E. (2007b). Life history notes of the critically endangered dwarf sawfish, *Pristis clavata*, Garman 1906 from the Kimberley region of Western Australia. In: Environmental Biology of Fishes.

- Thorburn, D.C., Peverell, S., Stevens, J. D., Last, P. R., Rowland, A. J. (2003). Status of freshwater and estuarine elasmobranchs in northern Australia. Final Report to Natural Heritage Trust. 75 pp.
- Thorson, T. B. (1976). Observations on the reproduction of the sawfish, *Pristis perotteti*, in Lake Nicaragua, with recommendations for its conservation. In: Investigations of the ichthyofauna of Nicaraguan lakes (ed TB Thorson). University of Nebraska-Lincoln. p 641-650.
- TSSC (2009). Commonwealth Listing Advice on *Pristis clavata* (Dwarf Sawfish). [Online]. Canberra, ACT: Threatened Species Scientific Committee, Department of the Environment, Water, Heritage and the Arts.
<http://www.environment.gov.au/biodiversity/threatened/species/pubs/68447-listing-advice.pdf>.
- Truelove, K. (2003). Draft freshwater sawfish (*Pristis microdon*) Recovery Plan. Department of the Environment and Heritage, unpublished report. 51 pp.
- United Nations Environment Programme (UNEP) (2005). Marine Litter, an analytical overview. Prepared by the Regional Seas Coordinating Office, the Secretariat of the Mediterranean Action Plan (MAP), the Secretariat of the Basel Convention, and the Coordination Office of the Global Programme of Action for the Protection of the Marine Environment from Land-Based Activities (GPA) of the United Nations Environment Programme (UNEP), in cooperation with the Intergovernmental Oceanographic Commission of the United Nations Educational, Scientific and Cultural Organization (IOC of UNESCO). United Nations, Rome, pp. 1312-1360.
- White, W. T. Dharmadi. (2007). Species and size compositions and reproductive biology of rays (Chondrichthyes, Batoidea) caught in target and non-target fisheries in eastern Indonesia. J. Fish Biol. 70:1809-1837.
- Whitley, G. P. (1945). Leichhardt's sawfish. Australian Zoologist 11 (1): 1-41.
- Whitty, J. M., Phillips, N. M., Morgan, D. L., Chaplin, J. A., Thorburn, D. C., Peverell, S. C. (2008). Habitat associations of Freshwater Sawfish (*Pristis microdon*) and Northern River Sharks (*Glyphis garricki*): including genetic analysis of freshwater sawfish across northern Australia. Report to Australian Government, Department of the Environment, Water, Heritage and the Arts. Centre for Fish and Fisheries Research, Murdoch University, Perth, Western Australia.
- Wueringer, B.E., Squire, L Jr. Kajiura, S.M., Hart, N.S., Collin, S.P. 2012. The function of the sawfish's saw. Current Biology 22 (5) R150 – R151.
- Wynen, L., Larson, H., Thorburn, D., Peverell, S., Morgan, D., Field, I., Gibb, K. (2008). Analysis of mitochondrial DNA sequence data from *Glyphis s. A* and *Glyphis garricki* from across northern Australia. Report to Department of Environment, Water, Heritage and the Arts.

8 Appendix

Appendix 1: Outputs of the shark and sawfish species pressure analysis for the North-west and North Marine Region*

Pressure	Source	Species					
		North-west	North				
			Three species sawfish	Dwarf sawfish	Freshwater sawfish	Green sawfish	Northern river shark
Sea level rise	Climate change						
Changes in sea temperature	Climate change						
Changes in oceanography	Climate change						
Ocean acidification	Climate change						
Chemical and nutrient pollution	Shipping						
	Vessels						
	Onshore and offshore mining						
	Agricultural activities						
	Urban development						
Changes in turbidity	Dredging spoils						
Marine debris	Land-based activities						
	Fishing vessels						
	Shipping						
	Vessels (other)						
Noise pollution	Seismic exploration vessels (other)						
Physical habitat modification	Dredging/ dredge spoil						
	Urban/coastal development						
	Offshore construction and installation of infrastructure						
	Onshore construction						
Human presence at sensitive sites	Tourism						
	Recreation and charter fishing (burleying)						
	Research						
Extraction of living resources	IUU						
	Commercial fishing (non-domestic)						
	Commercial fishing (domestic - harvest for aquaria)						
	Recreational fishing						
	Indigenous						
	Commercial fishing (prey depletion)						
Bycatch	Commercial fishing (domestic)						
	Recreational fishing						

Collision with vessels	Shipping Tourism Fishing						
Invasive species	Shipping Fishing vessels Land-based activities						
Oil Pollution	Shipping						
	Vessels						
	Oil rigs						
Changes in hydrological regimes	Land-based activities						
	Climate change						

Legend: of concern of potential concern Of less concern not of concern data deficient or not assessed

* Table 1 is a combination of the pressure analyses undertaken for the North and North-west Marine Regions. Full analysis and explanations for each identified pressure can be found in (DESWPaC, 2012a, b).