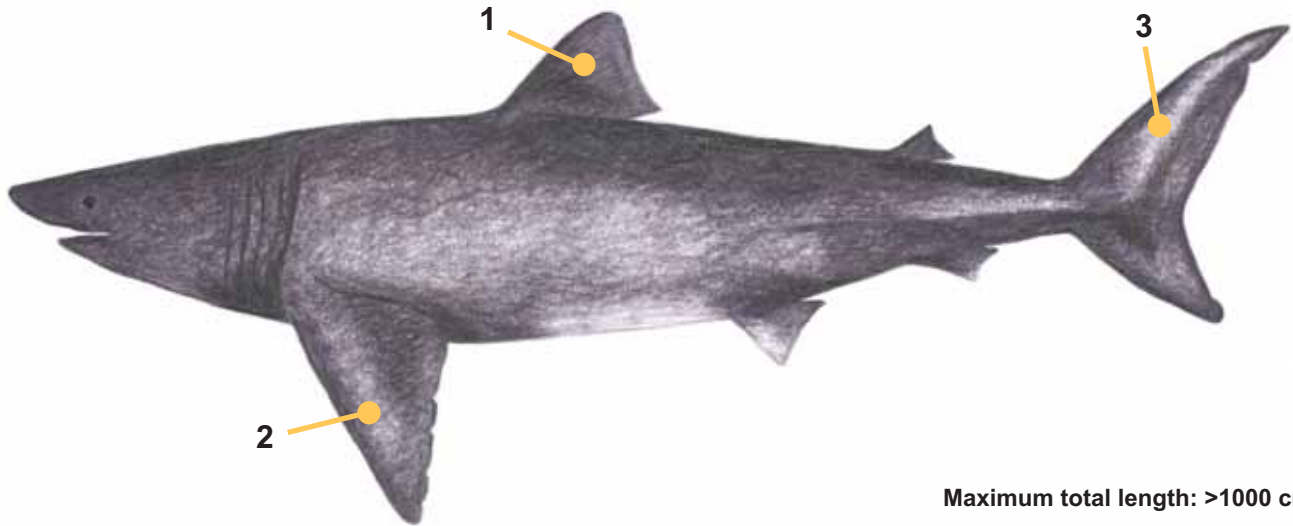


# Basking Shark

*Cetorhinus maximus*

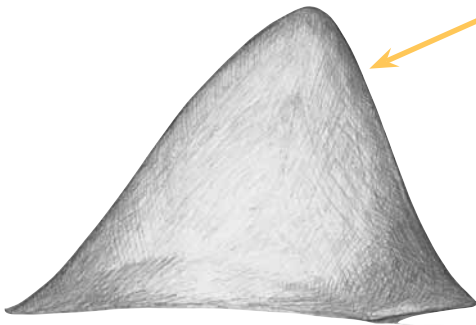


Maximum total length: >1000 cm

## Fins

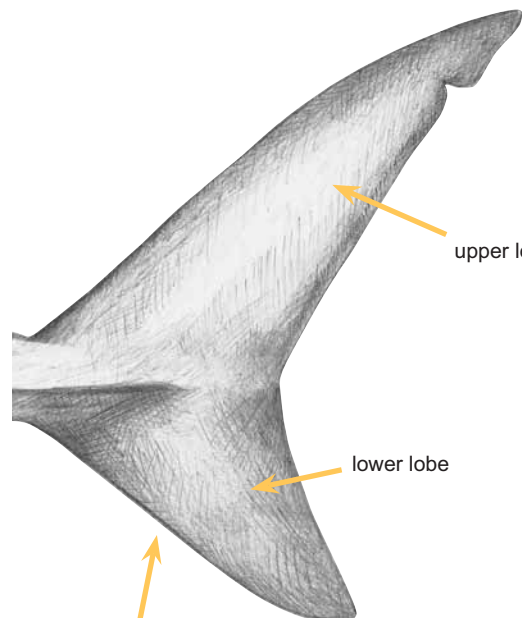
### 1. First dorsal

Large, high, erect and angular



upper lobe

lower lobe

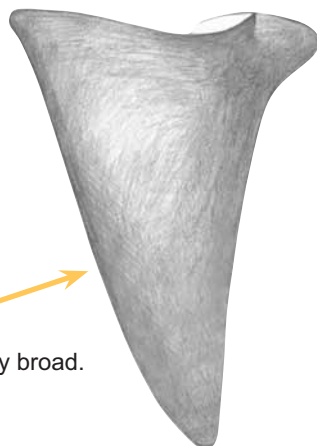


### 3. Caudal

Large with lower lobe only slightly smaller than upper lobe. No distinct markings

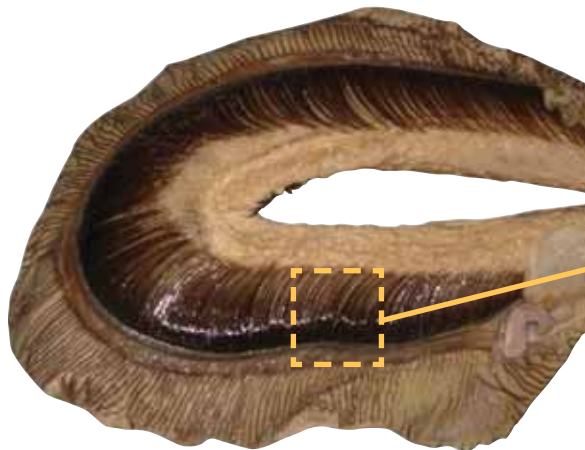
### 2. Pectoral

Long and moderately broad. No distinct markings

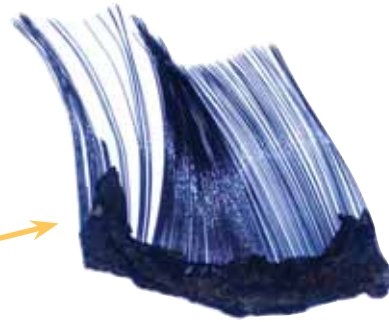


## Gills

---



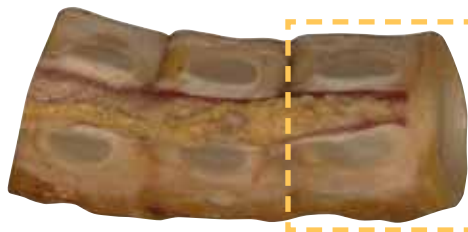
Gill arch (fresh)



Gill-raker filaments

## Vertebrae

---



Section of vertebral column (lateral view)



Vertebral disc (front view)

## Liver Oil

---



Squalene oil

Liver oil contains a high level of squalene which is used for medicinals and cosmetics (e.g. skin and hand cream), as well as for engine lubrication.

**Genetic Barcode:** Flesh (inc. fin clips) can be positively identified using genetic tests. Genetic information for Basking Shark is available at Genbank (<http://www.ncbi.nlm.nih.gov/Genbank/>) and FishBol (<http://www.barcodeoflife.org>).



Australian Government  
Department of the Environment  
and Water Resources

Copies of this ID sheet are available from: <http://www.environment.gov.au/biodiversity/trade-use/cites>